

Alpha B Crystallin Antibody
Alpha B Crystallin Antibody, Clone 1A7.D5
Catalog # ASM10084**Specification**

Alpha B Crystallin Antibody - Product Information

| | |
|-------------------|-----------------------------|
| Application | WB |
| Primary Accession | P02511 |
| Other Accession | NP_001876.1 |
| Host | Mouse |
| Isotype | IgG1 |
| Reactivity | Human, Rat, Pig, Bovine |
| Clonality | Monoclonal |

Description

Mouse Anti-Human Alpha B Crystallin Monoclonal IgG1

Target/Specificity

Detects ~20kDa (Predicted mol. weight is ~21kDa). Does not cross-react with α A-crystallin, β L-crystallin, β H-crystallin, γ -crystallin, HSP25, HSP27 or HSP47 proteins.

Other Names

AACRYA Antibody, CRYA2 Antibody, CRYAB Antibody, CTPP2 Antibody, HSPB5 Antibody, NY Ren 27 antigen Antibody, alpha crystallin BAntibody

Immunogen

Native Alpha B Crystallin

Purification

Protein G Purified

Storage **-20°C**

Storage Buffer

PBS pH7.2, 50% glycerol, 0.09% sodium azide

Shipping Temperature

Blue Ice or 4°C

Certificate of Analysis

0.5 μ g/ml of SMC-159 was sufficient for detection of 50 ng purified alpha B crystalline by colorimetric immunoblot analysis using Goat anti-mouse IgG:HRP as the secondary antibody.

Cellular Localization

Cytoplasm | Nucleus

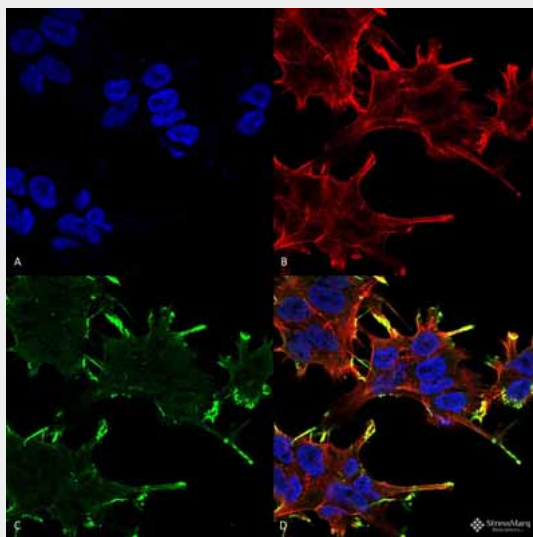
Alpha B Crystallin Antibody - Protocols

Provided below are standard protocols that you may find useful for product applications.

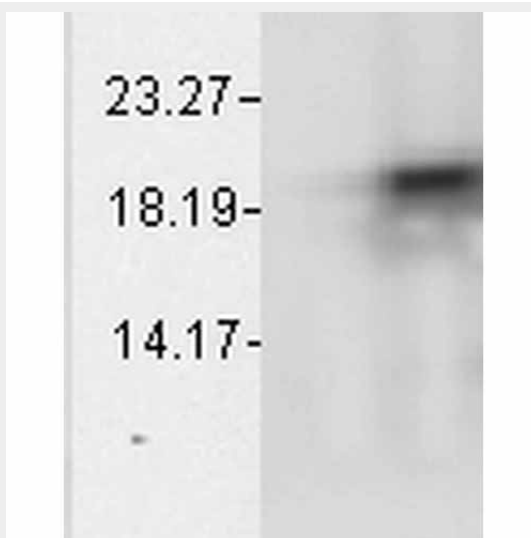
- [Western Blot](#)
- [Blocking Peptides](#)
- [Dot Blot](#)

- [Immunohistochemistry](#)
- [Immunofluorescence](#)
- [Immunoprecipitation](#)
- [Flow Cytometry](#)
- [Cell Culture](#)

Alpha B Crystallin Antibody - Images



Immunocytochemistry/Immunofluorescence analysis using Mouse Anti-Alpha B Crystallin Monoclonal Antibody, Clone 1A7.D5 (ASM10084). Tissue: Neuroblastoma cell line (SK-N-BE). Species: Human. Fixation: 4% Formaldehyde for 15 min at RT. Primary Antibody: Mouse Anti-Alpha B Crystallin Monoclonal Antibody (ASM10084) at 1:100 for 60 min at RT. Secondary Antibody: Goat Anti-Mouse ATTO 488 at 1:100 for 60 min at RT. Counterstain: Phalloidin Texas Red F-Actin stain; DAPI (blue) nuclear stain at 1:1000, 1:5000 for 60min RT, 5min RT. Localization: Membrane. Magnification: 60X. (A) DAPI (blue) nuclear stain (B) Phalloidin Texas Red F-Actin stain (C) Alpha B Crystallin Antibody (D) Composite.



Western Blot analysis of Bovine cell lysates showing detection of Alpha B Crystallin protein using Mouse Anti-Alpha B Crystallin Monoclonal Antibody, Clone 1A7.D5 (ASM10084). Load: 15 µg. Block: 1.5% BSA for 30 minutes at RT. Primary Antibody: Mouse Anti-Alpha B Crystallin Monoclonal Antibody (ASM10084) at 1:50 for 2 hours at RT. Secondary Antibody: Sheep Anti-Mouse IgG: HRP

for 1 hour at RT.

Alpha B Crystallin Antibody - Background

The alpha-crystallins are major water-soluble lens structural proteins of the vertebrate eye that are related to the small heat shock protein family. The alpha-crystallins possess structural and functional similarities with HSP25 and HSP27 (1). Mammalian lens crystallins are divided into alpha, beta and gamma families. Alpha and beta families are further divided into acidic and basic groups (Alpha-A and Alpha-B respectively). In the lens, alpha-crystallin primarily functions to maintain proper refractive index, however it can also function as a molecular chaperone that binds to the denatured proteins, keeping them in solution and thereby maintaining the translucency of the lens. When cellular stress occurs, alpha-crystallin enters its' phosphorylated state and may serve a structural control function and play a role in protein maintenance (2). In addition to their interaction with proteins, alpha-crystallins also interact with native molecules such as membrane proteins, Golgi matrix protein, structural proteins, nuclear proteins and DNA (3, 4, 5, 6, and 7). Two other functions are an autokinase activity and participation in the intracellular architecture, and it has also been proven that both alpha-A and B prevent apoptosis by inhibiting caspases (8). Specifically, alpha-B crystallin is found in many cells and organs outside the lens, and alpha B is overexpressed in several neurological disorders and in cell lines under stress conditions (9).

Alpha B Crystallin Antibody - References

1. Merck K.B. et al. (1993) J Biol Chem. 268: 1046-1052.
2. Horwitz J. (1992) Proc Natl Acad Sci USA. 89(21): 10449-10453.
3. Cobb B.A. and Petrash J.M. (2002) Biochemistry. 41: 483-490
4. Horwitz J. (2003) Exp Eye Res. 76: 145-153.
5. Bullard B. et al. (2004) J Biol Chem. 279: 7917-7924.
6. Gangalum R.K., Schibler M.J. and Bhat S.P. (2004) J Biol Chem. 279: 43374-43377.
7. Maddala R. and Rao V.P. (2005) Exp Cell Res. 306: 203-215.
8. Yaung J., et al. (2007) Molecular Vision 13: 566-577.
9. Head M.W. et al. (2000) Neuropathol Appl Neurobiol. 26: 304-312.
10. Banduseela V.C., et al. (2009) Physiol Genomics. 39(3): 141-159.