

Vinculin Antibody (biotin)
Catalog # ASC12067**Specification****Vinculin Antibody (biotin) - Product Information**

Application	WB
Primary Accession	P18206
Other Accession	4507877 , NP_003364 , 7414
Reactivity	Human, Mouse, Rat, Rabbit, Chicken
Host	Rabbit
Clonality	Polyclonal
Isotype	IgG
Calculated MW	123799
Application Notes	Vinculin antibody can be used for detection of Vinculin by Western blot at 0.5 - 1 µg/ml.

Vinculin Antibody (biotin) - Additional InformationGene ID **7414****Other Names**

CMD1W, CMH15, Metavinculin, MVCL

Precautions

Vinculin Antibody (biotin) is for research use only and not for use in diagnostic or therapeutic procedures.

Vinculin Antibody (biotin) - Protein Information

Name VCL

Function

Actin filament (F-actin)-binding protein involved in cell- matrix adhesion and cell-cell adhesion. Regulates cell-surface E- cadherin expression and potentiates mechanosensing by the E-cadherin complex. May also play important roles in cell morphology and locomotion.

Cellular Location

Cell membrane {ECO:0000250|UniProtKB:P12003}; Peripheral membrane protein {ECO:0000250|UniProtKB:P12003}; Cytoplasmic side {ECO:0000250|UniProtKB:P12003}. Cell junction, adherens junction {ECO:0000250|UniProtKB:P12003}. Cell junction, focal adhesion {ECO:0000250|UniProtKB:P12003}. Cytoplasm, cytoskeleton {ECO:0000250|UniProtKB:P85972}. Cell membrane, sarcolemma {ECO:0000250|UniProtKB:Q64727}; Peripheral membrane protein {ECO:0000250|UniProtKB:Q64727}; Cytoplasmic side {ECO:0000250|UniProtKB:Q64727}. Cell projection, podosome {ECO:0000250|UniProtKB:Q64727}. Note=Recruitment to cell-cell junctions occurs in a myosin II-dependent manner. Interaction with CTNNA1 is necessary for its localization to the cell-cell junctions {ECO:0000250|UniProtKB:P12003}

Tissue Location

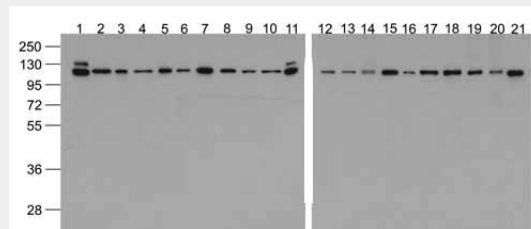
Metavinculin is muscle-specific.

Vinculin Antibody (biotin) - Protocols

Provided below are standard protocols that you may find useful for product applications.

- [Western Blot](#)
- [Blocking Peptides](#)
- [Dot Blot](#)
- [Immunohistochemistry](#)
- [Immunofluorescence](#)
- [Immunoprecipitation](#)
- [Flow Cytometry](#)
- [Cell Culture](#)

Vinculin Antibody (biotin) - Images



Western blot analysis of Vinculin in 293, A431, A549, Daudi, HeLa, HepG2, K562, 3T3, Raji, U937 cell lysate and mouse brain, rat brain, rabbit brain, mouse lung, rat lung, mouse liver, rat liver, rabbit spleen, chicken liver and chicken small intestine tissue lysate with Biotin-Vinculin antibody at 1 µg/ml.

Vinculin Antibody (biotin) - Background

Vinculin is a cytoskeletal protein that plays an important role in the regulation of focal adhesions and embryonic development (1). Three structural vinculin domains include an amino-terminal head, a short flexible proline-rich region and a carboxy-terminal tail (2). Expression of vinculin were shown to be affected by the level of actin expression (2,3). Vinculin deficiencies are associated with a decrease in cell adhesion and an increase in cell motility, suggesting a possible role in metastatic growth (4). Defects in VCL are the cause of cardiomyopathy dilated type 1W (CMD1W) (5).

Vinculin Antibody (biotin) - References

Burridge K, Fath K, Kelly T, et al. Focal adhesions: transmembrane junctions between the extracellular matrix and the cytoskeleton. *Annu. Rev. Cell Biol.* 1988; 4:487-525.; Gilmore AP, Jackson P, Waites GT, et al. Further characterization of the talin-binding site in the cytoskeletal protein vinculin. *J. Cell Sci.* 1992; 103:719-31.; Deakin NO, Ballestrem C, and Turner CE. Paxillin and Hic-5 interaction with vinculin is differentially regulated by Rac1 and RhoA. *PLoS One* 2012; 7:e37990.; Goldmann WH, Auernheimer V, Thievessen I, et al. Vinculin, cell mechanics and tumour cell invasion. *Cell Biol. Int.* 2013; Feb 1.