

**GAPDH Antibody**  
Catalog # ASC12053**Specification****GAPDH Antibody - Product Information**

Application	WB, IHC, IF
Primary Accession	<a href="#">P04406</a>
Other Accession	<a href="#">120649</a> , <a href="#">P04406</a> , <a href="#">2597</a>
Reactivity	Human, Mouse, Rat
Host	Rabbit
Clonality	Polyclonal
Isotype	IgG
Application Notes	GAPDH antibody can be used for the detection of GAPDH by Western blot at 0.5 - 2 µg/mL. Antibody can also be used for immunohistochemistry starting at 10 µg/mL. For immunofluorescence start at 20 µg/mL.

**GAPDH Antibody - Additional Information****Other Names**

GAPDH Antibody: Glyceraldehyde-3-phosphate dehydrogenase, G3PDH, GAPD

**Precautions**

GAPDH Antibody is for research use only and not for use in diagnostic or therapeutic procedures.

**GAPDH Antibody - Protein Information**

**Name** GAPDH {ECO:0000303|PubMed:2987855, ECO:0000312|HGNC:HGNC:4141}

**Function**

Has both glyceraldehyde-3-phosphate dehydrogenase and nitrosylase activities, thereby playing a role in glycolysis and nuclear functions, respectively (PubMed:<a href="http://www.uniprot.org/citations/11724794" target="\_blank">11724794</a>, PubMed:<a href="http://www.uniprot.org/citations/3170585" target="\_blank">3170585</a>). Glyceraldehyde-3-phosphate dehydrogenase is a key enzyme in glycolysis that catalyzes the first step of the pathway by converting D- glyceraldehyde 3-phosphate (G3P) into 3-phospho-D-glyceroyl phosphate (PubMed:<a href="http://www.uniprot.org/citations/11724794" target="\_blank">11724794</a>, PubMed:<a href="http://www.uniprot.org/citations/3170585" target="\_blank">3170585</a>). Modulates the organization and assembly of the cytoskeleton (By similarity). Facilitates the CHP1- dependent microtubule and membrane associations through its ability to stimulate the binding of CHP1 to microtubules (By similarity). Component of the GAIT (gamma interferon-activated inhibitor of translation) complex which mediates interferon-gamma-induced transcript-selective translation inhibition in inflammation processes (PubMed:<a href="http://www.uniprot.org/citations/23071094" target="\_blank">23071094</a>). Upon interferon-gamma treatment assembles into the GAIT complex which binds to stem loop-containing GAIT elements in the 3'-UTR of diverse inflammatory mRNAs (such as ceruplasmin)

and suppresses their translation (PubMed:<a href="http://www.uniprot.org/citations/23071094" target="\_blank">23071094</a>). Also plays a role in innate immunity by promoting TNF-induced NF-kappa-B activation and type I interferon production, via interaction with TRAF2 and TRAF3, respectively (PubMed:<a href="http://www.uniprot.org/citations/23332158" target="\_blank">23332158</a>, PubMed:<a href="http://www.uniprot.org/citations/27387501" target="\_blank">27387501</a>). Participates in nuclear events including transcription, RNA transport, DNA replication and apoptosis (By similarity). Nuclear functions are probably due to the nitrosylase activity that mediates cysteine S-nitrosylation of nuclear target proteins such as SIRT1, HDAC2 and PRKDC (By similarity).

#### Cellular Location

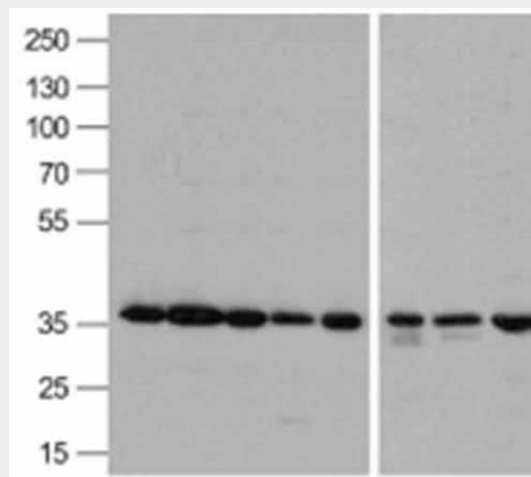
Cytoplasm, cytosol. Nucleus {ECO:0000250|UniProtKB:P04797}. Cytoplasm, perinuclear region. Membrane Cytoplasm, cytoskeleton {ECO:0000250|UniProtKB:P04797} Note=Translocates to the nucleus following S-nitrosylation and interaction with SIAH1, which contains a nuclear localization signal (By similarity). Postnuclear and Perinuclear regions (PubMed:12829261) {ECO:0000250|UniProtKB:P04797, ECO:0000269|PubMed:12829261}

#### GAPDH Antibody - Protocols

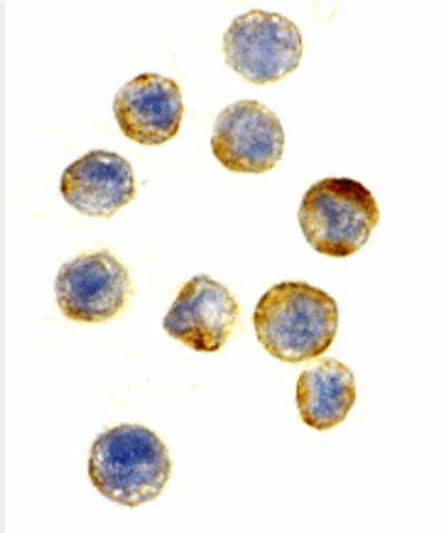
Provided below are standard protocols that you may find useful for product applications.

- [Western Blot](#)
- [Blocking Peptides](#)
- [Dot Blot](#)
- [Immunohistochemistry](#)
- [Immunofluorescence](#)
- [Immunoprecipitation](#)
- [Flow Cytometry](#)
- [Cell Culture](#)

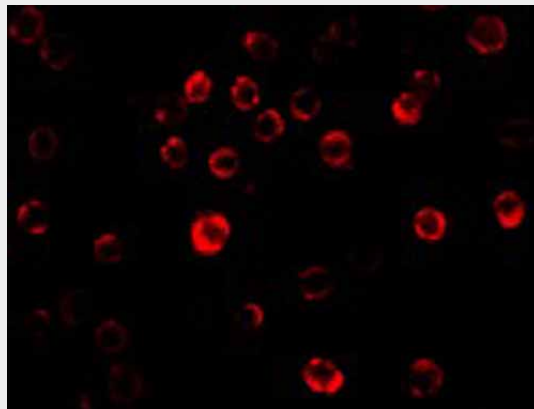
#### GAPDH Antibody - Images



Western blot analysis of GAPDH in A431, Daudi, HepG2, HL60, Jurkat, Human kidney, Mouse lung, and Chicken liver lysate with GAPDH antibody 0.5 µg/mL.



Immunohistochemical staining of GAPDH in HeLa cells at a dilution of 10 µg/mL.



Immunofluorescence of GAPDH in HeLa cells with GAPDH antibody at 20 µg/mL.

### **GAPDH Antibody - Background**

**GAPDH Antibody:** Glyceraldehyde-3-phosphate dehydrogenase (GAPDH) catalyzes the reversible oxidative phosphorylation of glyceraldehyde-3-phosphate in the presence of inorganic phosphate and nicotinamide adenine dinucleotide (NAD), an important energy-yielding step in carbohydrate metabolism. Recent evidence suggests that it also is involved in a number of cellular processes such as membrane fusion, phosphotransferase activity, DNA replication and repair, and nuclear RNA export. GAPDH has also been implicated in playing a role in different pathologies such as cancer progression, apoptosis, and neuronal diseases such as Alzheimer's and Huntington's disease. GAPDH is constitutively expressed at high levels in almost all tissues and cell lines making it ideal for use as a loading control marker in immunoblots.

### **GAPDH Antibody - References**

Sirover MA. New nuclear functions of the glycolytic protein, glyceraldehyde-3-phosphate dehydrogenase, in mammalian cells. *J. Cell. Biochem.* 2005; 95:45-52.;Glyceraldehyde-3-phosphate dehydrogenase, apoptosis, and neurodegenerative diseases. *Annu. Rev. Pharmacol. Toxicol.* 2005; 45:269-90.;;