

**UBAP2L Antibody**  
Catalog # ASC11959**Specification****UBAP2L Antibody - Product Information**

Application	IHC
Primary Accession	<a href="#">Q14157</a>
Other Accession	<a href="#">NP_055662</a> , <a href="#">9898</a>
Reactivity	Human, Mouse
Host	Rabbit
Clonality	Polyclonal
Isotype	IgG
Calculated MW	Predicted: 120 kDa

Application Notes	<b>Observed: 130 kDa KDa</b> <b>UBAP2L antibody can be used for the detection of UBAP2L by Western blot at 1 - 2 µg/mL. Antibody can also be used for immunocytochemistry at 10 µg/ml.</b>
-------------------	---

**UBAP2L Antibody - Additional Information**Gene ID **9898****Target/Specificity**

UBAP2L antibody was raised against a 19 amino acid peptide from near the amino terminus of human UBAP2L. <br><br>The immunogen is located within amino acids 200 - 250 of UBAP2L.

**Reconstitution & Storage**

UBAP2L antibody can be stored at 4°C for three months and -20°C, stable for up to one year.

**Precautions**

UBAP2L Antibody is for research use only and not for use in diagnostic or therapeutic procedures.

**UBAP2L Antibody - Protein Information**Name UBAP2L ([HGNC:29877](#))

Synonyms KIAA0144, NICE4

**Function**

Recruits the ubiquitination machinery to RNA polymerase II for polyubiquitination, removal and degradation, when the transcription-coupled nucleotide excision repair (TC-NER) machinery fails to resolve DNA damage (PubMed: <a href="http://www.uniprot.org/citations/35633597" target="\_blank">35633597</a>). Plays an important role in the activity of long-term repopulating hematopoietic stem cells (LT- HSCs) (By similarity). Is a regulator of stress granule assembly, required for their efficient formation (PubMed: <a href="http://www.uniprot.org/citations/29395067" target="\_blank">29395067</a>, PubMed: <a href="http://www.uniprot.org/citations/35977029" target="\_blank">35977029</a>). Required for

proper brain development and neocortex lamination (By similarity).

#### **Cellular Location**

Nucleus. Chromosome. Cytoplasm Cytoplasm, Stress granule Note=Associates with nuclear chromatin.

#### **Tissue Location**

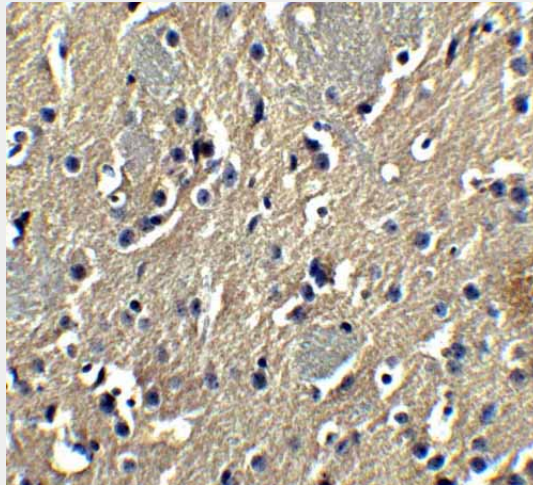
Ubiquitous..

### **UBAP2L Antibody - Protocols**

Provided below are standard protocols that you may find useful for product applications.

- [Western Blot](#)
- [Blocking Peptides](#)
- [Dot Blot](#)
- [Immunohistochemistry](#)
- [Immunofluorescence](#)
- [Immunoprecipitation](#)
- [Flow Cytometry](#)
- [Cell Culture](#)

### **UBAP2L Antibody - Images**



Immunohistochemistry of PION in mouse brain tissue with PION antibody at 5  $\mu$ g/mL.

### **UBAP2L Antibody - Background**

The UBA domain-containing protein ubiquitin associated protein 2-like (UBAP2L), also known as NICE4, is a ubiquitously expressed 1,087 amino acid protein. UBAP2L is preferentially expressed in hematopoietic stem cell (HSC) populations and interacts with BMI1, a well-known determinant of HSC function (1). It is essential for the activity of long-term repopulating HSCs but not the BMI1-dependent repression of the Ink4a/Arf locus (1).

### **UBAP2L Antibody - References**

Bordeleau ME, Aucagne R, Chagraoui J, et al. UBAP2L is a novel BMI1-interacting protein essential for hematopoietic stem cell activity. *Blood* 2014; 124:2362-9.

