

LANCL2 Antibody
Catalog # ASC11958

Specification

LANCL2 Antibody - Product Information

Application	WB, IHC
Primary Accession	O9NS86
Other Accession	NP_061167 , 8923911
Reactivity	Human, Mouse, Rat
Host	Rabbit
Clonality	Polyclonal
Isotype	IgG
Calculated MW	Predicted: 50 kDa; Observed: 48 kDa
Application Notes	LANCL2 antibody can be used for the detection of LANCL2 by Western blot at 1 - 2 µg/mL. Antibody can also be used for immunohistochemistry starting at 5 µg/mL.

LANCL2 Antibody - Additional Information

Gene ID **55915**

Target/Specificity

LANCL2; LANCL2 antibody is human, mouse and rat reactive.

Reconstitution & Storage

LANCL2 antibody can be stored at 4°C for three months and -20°C, stable for up to one year.

Precautions

LANCL2 Antibody is for research use only and not for use in diagnostic or therapeutic procedures.

LANCL2 Antibody - Protein Information

Name LANCL2

Synonyms GPR69B, TASP

Function

Necessary for abscisic acid (ABA) binding on the cell membrane and activation of the ABA signaling pathway in granulocytes.

Cellular Location

Nucleus. Cytoplasm. Cell membrane Note=Localizes to the juxta-nuclear vesicles (PubMed:16979580) Associates with the cortical actin cytoskeleton (PubMed:16979580) Cholesterol depletion by methyl-beta-cyclodextrin causes partial dissociation from the cell membrane in vitro and an enhanced cell detachment from the matrix in vivo (PubMed:16979580). Membrane- association is important for the increased cellular sensitivity to an anticancer drug (adriamycin) (PubMed:16979580)

Tissue Location

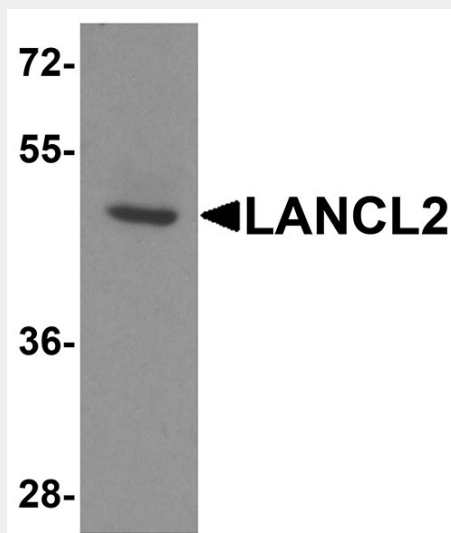
Expressed in brain and testis.

LANCL2 Antibody - Protocols

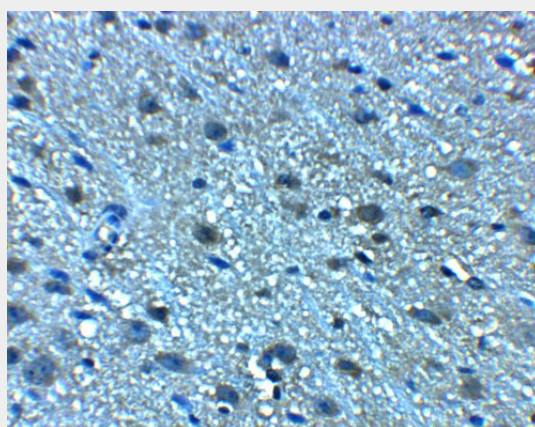
Provided below are standard protocols that you may find useful for product applications.

- [Western Blot](#)
- [Blocking Peptides](#)
- [Dot Blot](#)
- [Immunohistochemistry](#)
- [Immunofluorescence](#)
- [Immunoprecipitation](#)
- [Flow Cytometry](#)
- [Cell Culture](#)

LANCL2 Antibody - Images



Western blot analysis of LANCL2 in human brain tissue lysate with LANCL2 antibody at 1 µg/ml.



Immunohistochemistry of LANCL2 in mouse brain tissue with LANCL2 antibody at 5 µg/mL.

LANCL2 Antibody - Background

LANCL2 (LanC-like protein 2), also known as TASP (testis-specific adriamycin sensitivity protein) or GPR69B, is a 450 amino acid member of the LanC-like protein family (1). It is expressed highly in brain and testis and localized to the nucleus, cytoplasm and cell membrane (2,3). LANCL2 is necessary for abscisic acid (ABA) binding on the cell membrane and activation of the ABA signaling pathway in granulocytes (3,4).

LANCL2 Antibody - References

Mayer H, Pongratz M, and Prohaska R. Molecular cloning, characterization, and tissue-specific expression of human LANCL2, a novel member of the LanC-like protein family. *DNA Seq.* 2001; 12:161-6.

Sturla L, Fresia C, Guida L, et al. Binding of abscisic acid to human LANCL2. *Biochem. Biophys. Res. Commun.* 2011; 415:390-5.

Landlinger C, Salzer U, and Prohaska R. Myristoylation of human LanC-like protein 2 (LANCL2) is essential for the interaction with the plasma membrane and the increase in cellular sensitivity to adriamycin. *Biochim. Biophys. Acta.* 2006; 1758:1759-67.

Zeng M, van der Donk WA, Chen J. Lanthionine synthetase C-like protein 2 (LanCL2) is a novel regulator of Akt. *Mol. Biol. Cell* 2014; 25:3954-61.