

**GAS6 Antibody**  
Catalog # ASC11956

**Specification**

---

**GAS6 Antibody - Product Information**

Application	WB, IHC
Primary Accession	<a href="#">Q14393</a>
Other Accession	<a href="#">NP_000811</a> , <a href="#">4557617</a>
Reactivity	Human, Mouse, Rat
Host	Rabbit
Clonality	Polyclonal
Isotype	IgG
Calculated MW	Predicted: 75 kDa; Observed: 75 kDa KDa
Application Notes	GAS6 antibody can be used for the detection of GAS6 by Western blot at 1 - 2 µg/mL. Antibody can also be used for immunohistochemistry starting at 2.5 µg/mL.

**GAS6 Antibody - Additional Information**

Gene ID **2621**

**Target/Specificity**

GAS6; GAS6 antibody is human, mouse and rat reactive. At least four isoforms of GAS6 are known to exist; this antibody will only detect the longest isoform.

**Reconstitution & Storage**

GAS6 antibody can be stored at 4°C for three months and -20°C, stable for up to one year.

**Precautions**

GAS6 Antibody is for research use only and not for use in diagnostic or therapeutic procedures.

**GAS6 Antibody - Protein Information**

Name GAS6 ([HGNC:4168](#))

Synonyms AXLLG

**Function**

Ligand for tyrosine-protein kinase receptors AXL, TYRO3 and MER whose signaling is implicated in cell growth and survival, cell adhesion and cell migration. GAS6/AXL signaling plays a role in various processes such as endothelial cell survival during acidification by preventing apoptosis, optimal cytokine signaling during human natural killer cell development, hepatic regeneration, gonadotropin-releasing hormone neuron survival and migration, platelet activation, or regulation of thrombotic responses.

**Cellular Location**

Secreted.

### Tissue Location

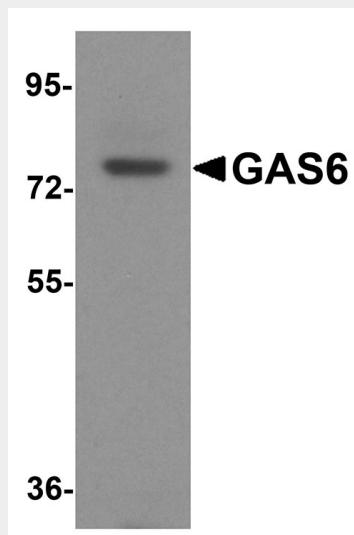
Plasma. Isoform 1 and isoform 2 are widely expressed, isoform 1 being expressed at higher levels than isoform 2 in most tissues. Isoform 2 is the predominant form in spleen

### GAS6 Antibody - Protocols

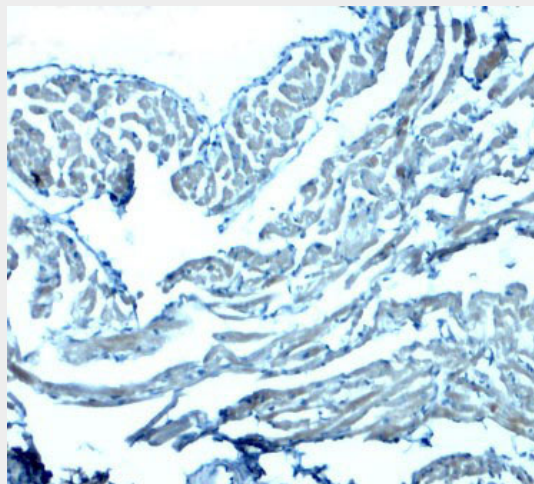
Provided below are standard protocols that you may find useful for product applications.

- [Western Blot](#)
- [Blocking Peptides](#)
- [Dot Blot](#)
- [Immunohistochemistry](#)
- [Immunofluorescence](#)
- [Immunoprecipitation](#)
- [Flow Cytometry](#)
- [Cell Culture](#)

### GAS6 Antibody - Images



Western blot analysis of GAS6 in mouse heart tissue lysate with GAS6 antibody at 1  $\mu$ g/ml.



Immunohistochemistry of GAS6 in mouse heart tissue with GAS6 antibody at 2.5 µg/mL.

### **GAS6 Antibody - Background**

The growth arrest-specific 6 (GAS6) protein is a gamma-carboxyglutamic acid (Gla)-containing protein and a member of a family of plasma vitamin K-dependent proteins. GAS6 is involved in vascular homeostasis, cell proliferation, apoptosis, leukocyte migration, and platelet aggregation (1,2). GAS6 is the ligand for the type I transmembrane receptor tyrosine kinase receptors Tyro3, Axl, and Mer (3). This gene is frequently overexpressed in many cancers and has been implicated as an adverse prognostic marker (4). Elevated protein levels are additionally associated with a variety of disease states, including venous thromboembolic disease, systemic lupus erythematosus, chronic renal failure, and preeclampsia (2).

### **GAS6 Antibody - References**

Schneider C, King RM, and Philipson L. Genes specifically expressed at growth arrest of mammalian cells. *Cell* 1988; 54:787-93.

Laurance S, Lemarie CA, and Blostein MD. Growth arrest-specific gene 6 (gas6) and vascular hemostasis. *Adv. Nutr.* 2012; 3:196-203.

Stitt TN, Conn G, Gore M, et al. The anticoagulation factor protein S and its relative, Gas6, are ligands for the Tyro 3/Axl family of receptor tyrosine kinases. *Cell* 1995; 80:661-70.

van der Meer JH, van der Poll T, and van 't Veer C. TAM receptors, Gas6, and protein S: roles in inflammation and hemostasis. *Blood* 2014; 123:2460-9.