

LIN54 Antibody
Catalog # ASC11838**Specification****LIN54 Antibody - Product Information**

Application	IHC
Primary Accession	O6MZIP
Other Accession	NP_919258 , 132660
Reactivity	Human, Mouse, Rat
Host	Rabbit
Clonality	Polyclonal
Isotype	IgG
Calculated MW	Predicted: 88 kDa

Application Notes	Observed: 82 kDa KDa LIN54 antibody can be used for detection of LIN54 by Western blot at 1 - 2 µg/mL. Antibody can also be used for immunocytochemistry at 2.5 µg/mL. For immunofluorescence start at 20 µg/mL
-------------------	---

LIN54 Antibody - Additional InformationGene ID **132660****Target/Specificity**

LIN54 antibody was raised against a 16 amino acid peptide near the carboxy terminus of human LIN54. The immunogen is located within the last 50 amino acids of LIN54.

Reconstitution & Storage

LIN54 antibody can be stored at 4°C for three months and -20°C, stable for up to one year.

Precautions

LIN54 Antibody is for research use only and not for use in diagnostic or therapeutic procedures.

LIN54 Antibody - Protein Information

Name LIN54

Synonyms CXCDC1, KIAA2037

Function

Component of the DREAM complex, a multiprotein complex that can both act as a transcription activator or repressor depending on the context (PubMed: [17531812](http://www.uniprot.org/citations/17531812), PubMed: [17671431](http://www.uniprot.org/citations/17671431)). In G0 phase, the complex binds to more than 800 promoters and is required for repression of E2F target genes (PubMed: [17531812](http://www.uniprot.org/citations/17531812), PubMed: [17671431](http://www.uniprot.org/citations/17671431)).

In S phase, the complex selectively binds to the promoters of G2/M genes whose products are required for mitosis and participates in their cell cycle dependent activation (PubMed:17531812, PubMed:17671431). In the complex, acts as a DNA-binding protein that binds the promoter of CDK1 in a sequence- specific manner (PubMed:19725879). Specifically recognizes the consensus motif 5'-TTYRAA-3' in target DNA (PubMed:27465258).

Cellular Location

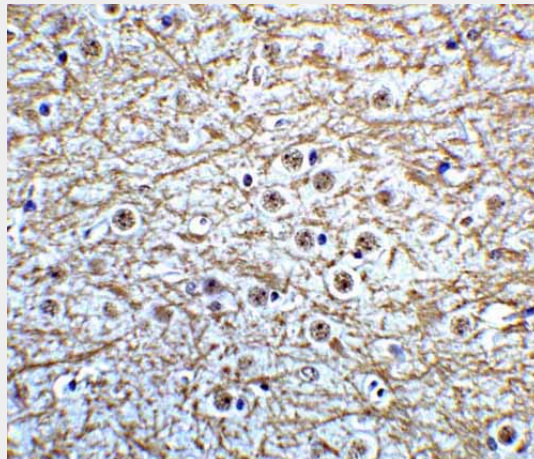
Nucleus.

LIN54 Antibody - Protocols

Provided below are standard protocols that you may find useful for product applications.

- [Western Blot](#)
- [Blocking Peptides](#)
- [Dot Blot](#)
- [Immunohistochemistry](#)
- [Immunofluorescence](#)
- [Immunoprecipitation](#)
- [Flow Cytometry](#)
- [Cell Culture](#)

LIN54 Antibody - Images



Immunohistochemistry of MSI2 in mouse brain tissue with MSI2 Antibody at 5 µg/mL.

LIN54 Antibody - Background

LIN54 is a component of the LIN, or DREAM, complex, an essential regulator of cell cycle genes. This complex functions as a transcriptional repressor by binding to promoters of E2F target genes that regulate the G1/S transition (1). LIN54 is required for cell cycle progression and can bind to the cdc2 promoter in a sequence-specific manner (2).

LIN54 Antibody - References

Schmit F, Cremer S, and Gaubatz S. LIN54 is an essential core subunit of the DREAM/LINC complex

that binds to the cdc2 promoter in a sequence-specific manner. FEBS J. 2009; 276:5703-16.
Matsuo T, Kuramoto H, Kumazaki T, et al. LIN54 harboring a mutation in CHC domain is localized to the cytoplasm and inhibits cell cycle progression. Cell Cycle 2012; 11:3227-36.