

**SHISA3 Antibody**  
Catalog # ASC11632

**Specification**

---

**SHISA3 Antibody - Product Information**

Application	WB, IHC, IF
Primary Accession	<a href="#">AOPJX4</a>
Other Accession	<a href="#">NP_001073974</a> , <a href="#">122937450</a>
Reactivity	Human, Mouse, Rat
Host	Rabbit
Clonality	Polyclonal
Isotype	IgG
Calculated MW	Predicted: 26 kDa

Application Notes	Observed: 28 kDa KDa SHISA3 Antibody can be used for detection of SHISA3 by Western blot at 1 µg/mL.
-------------------	---

**SHISA3 Antibody - Additional Information**

Gene ID	152573
---------	--------

**Target/Specificity**

SHISA3; SHISA3 antibody is predicted to not cross-react with other SHISA protein family members.

**Reconstitution & Storage**

SHISA3 antibody can be stored at 4°C for three months and -20°C, stable for up to one year.

**Precautions**

SHISA3 Antibody is for research use only and not for use in diagnostic or therapeutic procedures.

**SHISA3 Antibody - Protein Information**

**Name** SHISA3

**Function**

Plays an essential role in the maturation of presomitic mesoderm cells by individual attenuation of both FGF and WNT signaling.

**Cellular Location**

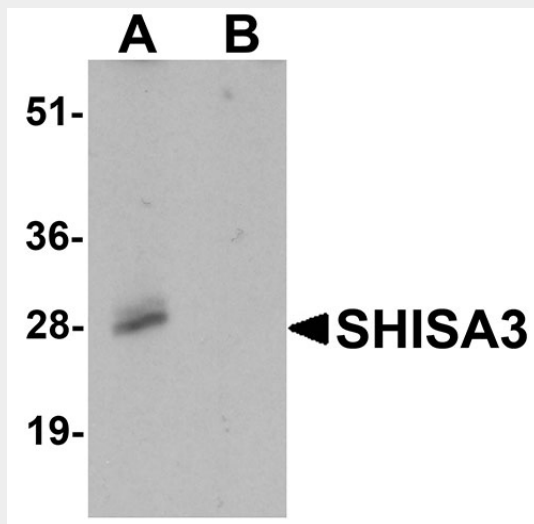
Endoplasmic reticulum membrane {ECO:0000250, ECO:0000250|UniProtKB:Q7T0Z7}; Single-pass type I membrane protein {ECO:0000250|UniProtKB:Q7T0Z7}

**SHISA3 Antibody - Protocols**

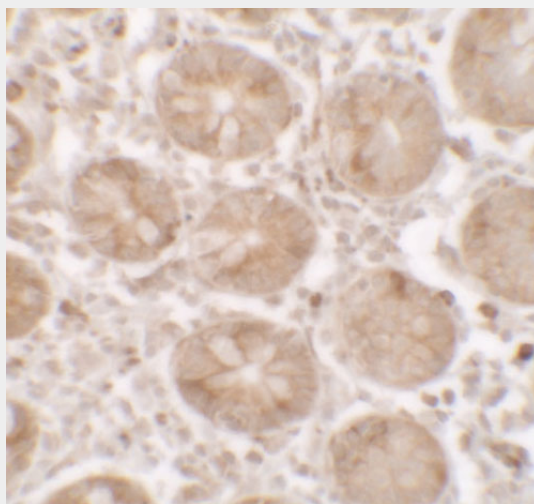
Provided below are standard protocols that you may find useful for product applications.

- [Western Blot](#)
- [Blocking Peptides](#)
- [Dot Blot](#)
- [Immunohistochemistry](#)
- [Immunofluorescence](#)
- [Immunoprecipitation](#)
- [Flow Cytometry](#)
- [Cell Culture](#)

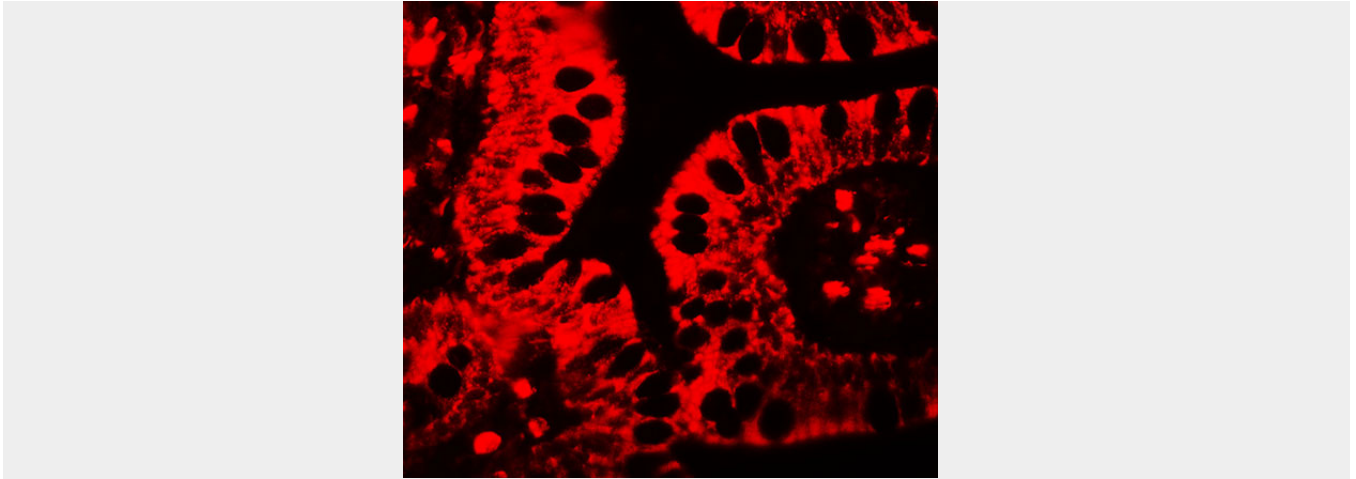
### SHISA3 Antibody - Images



Western blot analysis of SHISA3 in human small intestine Tissue lysate with SHISA3 antibody at 1  $\mu\text{g}/\text{mL}$  in (A) the absence and (B) the presence of blocking peptide.



Immunohistochemistry of SHISA3 in human small intestine tissue with SHISA3 antibody at 2.5  $\mu\text{g}/\text{ml}$ .



Immunofluorescence of SHISA3 in human small intestine tissue with SHISA3 antibody at 20  $\mu\text{g/ml}$ .

### **SHISA3 Antibody - Background**

**SHISA3 Antibody:** SHISA3 plays an essential role in the maturation of presomitic mesoderm cells by individual attenuation of both FGF and WNT signaling. The Shisa family of single-transmembrane proteins is characterized by an N-terminal cysteine-rich domain and a proline-rich C-terminal region. Its founding member, *Xenopus Shisa*, promotes head development by antagonizing Wnt and FGF signaling. Shisa physically interacted with immature forms of the Wnt receptor Frizzled and the FGF receptor within the ER and inhibited their posttranslational maturation and trafficking to the cell surface. Loss of Shisa function sensitized the neuroectoderm to Wnt signaling and suppressed head formation during gastrulation.

### **SHISA3 Antibody - References**

Furushima K, Yamamoto A, Nagano T, et al. Mouse homologues of Shisa antagonistic to Wnt and Fgf signalings. *Dev. Biol.* 2007; 306:480-92.  
Pei J and Grishin NV. Unexpected diversity in Shisa-like proteins suggests the importance of their roles as transmembrane adaptors. *Cell Signal.* 2012; 24:758-69.  
Yamamoto A, Nagano T, Takehara S, et al. Shisa promotes head formation through the inhibition of receptor protein maturation for the caudalizing factors, Wnt and FGF. *Cell* 2005; 120:223-35