

**SEPT1 Antibody**  
Catalog # ASC11497

**Specification**

---

**SEPT1 Antibody - Product Information**

Application	WB, ICC, IF
Primary Accession	<a href="#">Q8WYJ6</a>
Other Accession	<a href="#">NP_443070</a> , <a href="#">431822382</a>
Reactivity	Human, Mouse, Rat
Host	Rabbit
Clonality	Polyclonal
Isotype	IgG
Application Notes	SEPT1 antibody can be used for detection of SEPT1 by Western blot at 1 µg/mL. Antibody can also be used for immunocytochemistry starting at 5 µg/mL. For immunofluorescence start at 5 µg/mL.

**SEPT1 Antibody - Additional Information**

Gene ID **1731**

**Target/Specificity**

SEPT1; At least two isoforms of SEPT1 are known to exist. This antibody is predicted to not cross-react with other Septin protein family members.

**Reconstitution & Storage**

SEPT1 antibody can be stored at 4°C for three months and -20°C, stable for up to one year. As with all antibodies care should be taken to avoid repeated freeze thaw cycles. Antibodies should not be exposed to prolonged high temperatures.

**Precautions**

SEPT1 Antibody is for research use only and not for use in diagnostic or therapeutic procedures.

**SEPT1 Antibody - Protein Information**

Name SEPTIN1 ([HGNC:2879](#))

Synonyms DIFF6, PNUTL3, SEPT1

**Function**

Filament-forming cytoskeletal GTPase (By similarity). May play a role in cytokinesis (Potential).

**Cellular Location**

Cytoplasm. Cytoplasm, cytoskeleton. Cytoplasm, cytoskeleton, microtubule organizing center, centrosome. Midbody. Note=Remains at the centrosomes and the nearby microtubules throughout mitosis. Localizes to the midbody during cytokinesis

**Tissue Location**

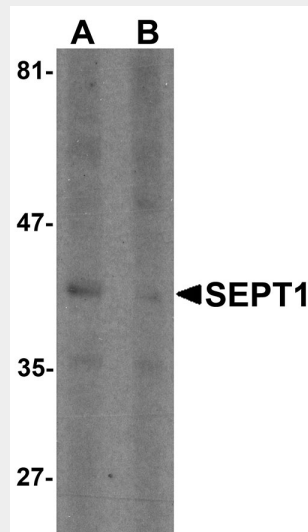
Expressed at high levels in lymphoid and hematopoietic tissues.

### SEPT1 Antibody - Protocols

Provided below are standard protocols that you may find useful for product applications.

- [Western Blot](#)
- [Blocking Peptides](#)
- [Dot Blot](#)
- [Immunohistochemistry](#)
- [Immunofluorescence](#)
- [Immunoprecipitation](#)
- [Flow Cytometry](#)
- [Cell Culture](#)

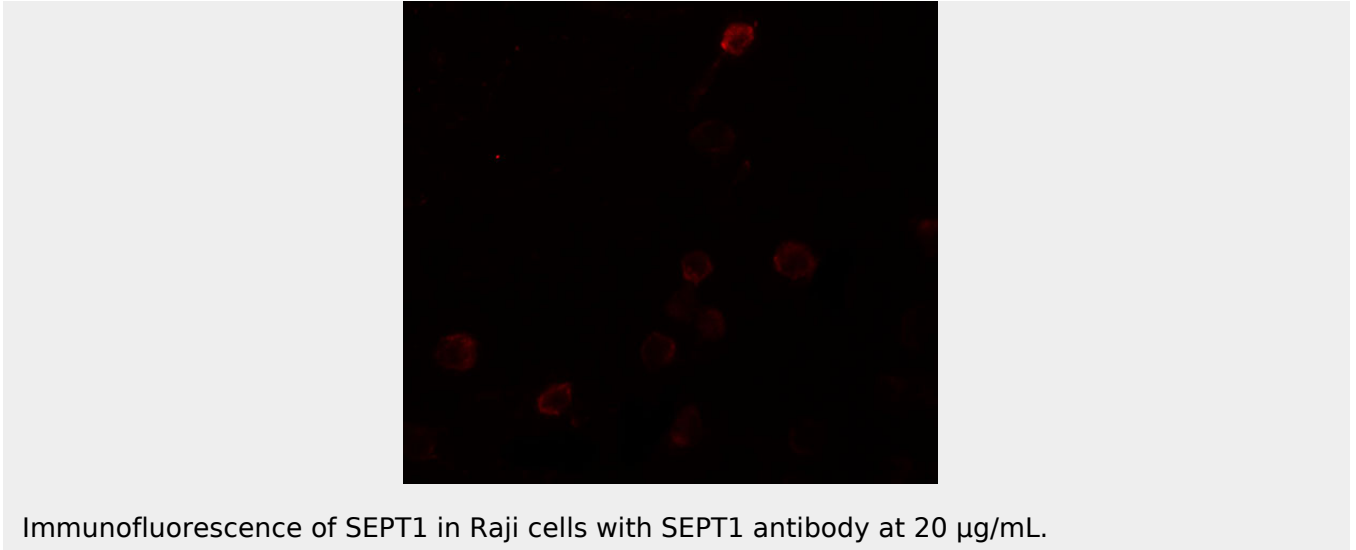
### SEPT1 Antibody - Images



Western blot analysis of SEPT1 in Raji cell lysate with SEPT1 antibody at 1  $\mu$ g/ml in (A) the absence and (B) the presence of blocking peptide.



Immunocytochemistry of SEPT1 in Raji cells with SEPT1 antibody at 5  $\mu$ g/mL.



Immunofluorescence of SEPT1 in Raji cells with SEPT1 antibody at 20  $\mu$ g/mL.

### **SEPT1 Antibody - Background**

**SEPT1 Antibody:** SEPT1 (also known as Septin 1), is a member of the septin family of GTPases. Members of this family are required for cytokinesis and the maintenance of cellular morphology. SEPT1 was initially identified through yeast two-hybrid screening as an interaction partner for the serine/threonine kinase Aurora-B. During mitosis, SEPT1 localizes to the spindle pole, suggesting that it may play a role in cytokinesis and chromosome congression.

### **SEPT1 Antibody - References**

Qi M, Yu W, Liu S, et al. Septin1, a new interaction partner for human serine/threonine kinase aurora-B. *Biochem. Biophys. Res. Commun.* 2005; 336:994-1000.  
Russell SE and Hall PA. Septin genomics: a road less travelled. *Biol. Chem.* 2011; 392:763-7.  
Zhu J, Qi ST, Wang YP, et al. Septin1 is required for spindle assembly and chromosome congression in mouse oocytes. *Dev. Dyn.* 2011; 240:2281-9.