

**SPATA19 Antibody**  
Catalog # ASC11413

**Specification**

---

**SPATA19 Antibody - Product Information**

Application	<b>WB</b>
Primary Accession	<a href="#">O7Z5L4</a>
Other Accession	<a href="#">EAW67810</a> , <a href="#">28376652</a>
Reactivity	<b>Human, Mouse, Rat</b>
Host	<b>Chicken</b>
Clonality	<b>Polyclonal</b>
Isotype	<b>IgY</b>
Application Notes	<b>SPATA19 antibody can be used for detection of SPATA19 by Western blot at 1 - 2 µg/mL.</b>

**SPATA19 Antibody - Additional Information**

Gene ID **219938**

**Target/Specificity**

SPATA19; At least two isoforms of SPATA19 are known to exist; this antibody will detect both isoforms. SPATA19 antibody is predicted to not cross-react with other SPATA family members.

**Reconstitution & Storage**

SPATA19 antibody can be stored at 4°C for three months and -20°C, stable for up to one year. As with all antibodies care should be taken to avoid repeated freeze thaw cycles. Antibodies should not be exposed to prolonged high temperatures.

**Precautions**

SPATA19 Antibody is for research use only and not for use in diagnostic or therapeutic procedures.

**SPATA19 Antibody - Protein Information**

**Name** SPATA19

**Synonyms** SPERGEN1

**Function**

Essential for sperm motility and male fertility (By similarity). Plays an important role in sperm motility by regulating the organization and function of the mitochondria and is also required for correct sperm midpiece assembly (By similarity).

**Cellular Location**

Mitochondrion outer membrane {ECO:0000250|UniProtKB:Q9DAQ9}. Mitochondrion {ECO:0000250|UniProtKB:Q9DAQ9}. Cell projection, cilium, flagellum {ECO:0000250|UniProtKB:Q9DAQ9}. Note=Localizes to the midpiece of the sperm flagellum. {ECO:0000250|UniProtKB:Q9DAQ9}

### Tissue Location

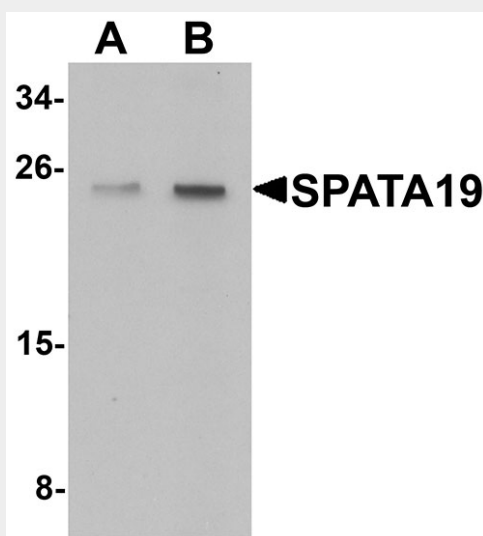
Expressed specifically in testis.

### SPATA19 Antibody - Protocols

Provided below are standard protocols that you may find useful for product applications.

- [Western Blot](#)
- [Blocking Peptides](#)
- [Dot Blot](#)
- [Immunohistochemistry](#)
- [Immunofluorescence](#)
- [Immunoprecipitation](#)
- [Flow Cytometry](#)
- [Cell Culture](#)

### SPATA19 Antibody - Images



Western blot analysis of SPATA19 in rat lung tissue lysate with SPATA19 antibody at (A) 1 and (B) 2 µg/mL.

### SPATA19 Antibody - Background

**SPATA19 Antibody:** SPATA19, also known as SPERGEN1, was initially identified as a testis-specific protein that localizes to the surface of mitochondria in the middle piece of mature spermatozoa. Recent experiments have shown that elevated levels of SPATA19 have been found in basal cell carcinomas and prostate cancers, suggesting that SPATA19 may serve as a putative cancer biomarker and a target for cancer immunotherapy.

### SPATA19 Antibody - References

Miyamoto T, Sengoku K, Hasuike S, et al. Isolation and expression analysis of the human testis-specific gene, SPERGEN-1, a spermatogenic cell-specific gene-1. *J. Assist. Reprod. Genet.* 2003; 20:101-4.

Doiguchi M, Mori T, Toshimori K, et al. Spergen-1 might be an adhesive molecule associated with mitochondria in the middle piece of spermatozoa. *Dev. Biol.* 2002; 252:127-37.

Ghafouri-Fard S, Abbasi A, Moslehi H, et al. Elevated levels of testis-specific genes TEX101 and

SPATA19 in basal cell carcinoma and their correlation with clinical and pathological features. Br. J. Dermatol. 2010; 162:772-9

Ghafouri-Fard S, Ousati Ashtiani Z, Sabah Golian B, et al. Expression of two testis-specific genes, SPATA19 and LEMD1, in prostate cancer. Arch. Med. Res. 2010; 41:195-200.