

ZGPAT Antibody
Catalog # ASC11410**Specification**

ZGPAT Antibody - Product Information

Application	WB, IF
Primary Accession	Q8N5A5
Other Accession	NP_115916 , 133925793
Reactivity	Human
Host	Chicken
Clonality	Polyclonal
Isotype	IgY
Application Notes	ZGPAT antibody can be used for detection of ZGPAT by Western blot at 1 µg/mL. Antibody can also be used for immunofluorescence starting at 20 µg/mL. For immunofluorescence start at 20 µg/mL.

ZGPAT Antibody - Additional InformationGene ID **84619****Target/Specificity**

ZGPAT; Multiple isoforms of ZGPAT are known to exist.

Reconstitution & Storage

ZGPAT antibody can be stored at 4°C for three months and -20°C, stable for up to one year. As with all antibodies care should be taken to avoid repeated freeze thaw cycles. Antibodies should not be exposed to prolonged high temperatures.

Precautions

ZGPAT Antibody is for research use only and not for use in diagnostic or therapeutic procedures.

ZGPAT Antibody - Protein Information**Name** ZGPAT**Synonyms** GPATC6, GPATCH6, KIAA1847, ZC3H9, ZC3HDC**Function**

Transcription repressor that specifically binds the 5'- GGAG[GA]A[GA]A-3' consensus sequence. Represses transcription by recruiting the chromatin multiprotein complex NuRD to target promoters. Negatively regulates expression of EGFR, a gene involved in cell proliferation, survival and migration. Its ability to repress genes of the EGFR pathway suggest it may act as a tumor suppressor. Able to suppress breast carcinogenesis.

Cellular Location

Nucleus.

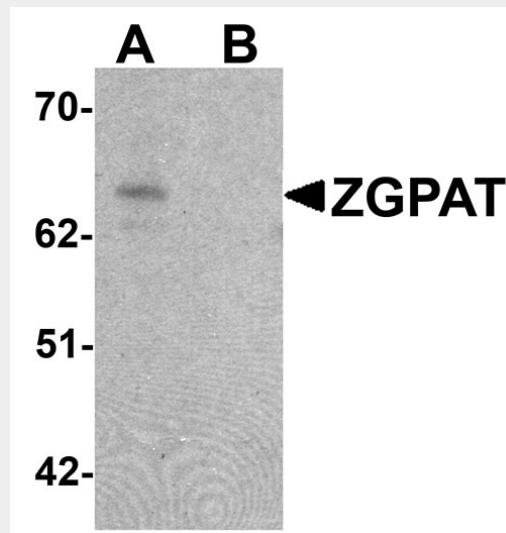
Tissue Location
Widely expressed..

ZGPAT Antibody - Protocols

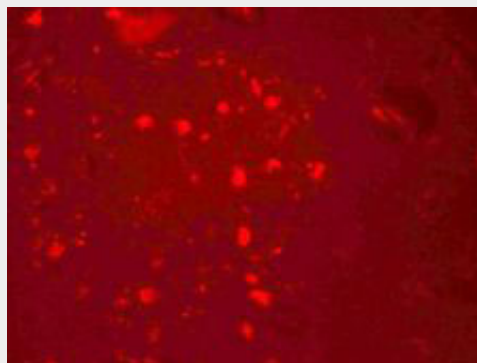
Provided below are standard protocols that you may find useful for product applications.

- [Western Blot](#)
- [Blocking Peptides](#)
- [Dot Blot](#)
- [Immunohistochemistry](#)
- [Immunofluorescence](#)
- [Immunoprecipitation](#)
- [Flow Cytometry](#)
- [Cell Culture](#)

ZGPAT Antibody - Images



Western blot analysis of ZGPAT in SK-N-SH cell lysate with ZGPAT antibody at 1 $\mu\text{g/mL}$ in (A) the absence and (B) the presence of blocking peptide.



Immunofluorescence of ZGPAT in human brain cells with ZGPAT antibody at 20 $\mu\text{g/mL}$.

ZGPAT Antibody - Background

ZGPAT Antibody: The Zinc finger CCCH-type with G patch domain-containing protein (ZGPAT), is a

transcriptional repressor that regulates several cellular pathways including EGFR pathways that are involved in cell proliferation, migration and survival. ZGPAT recruits the Mi-2/NuRD complex and represses the expression of EGFR. ZGPAT is down-regulated in breast carcinomas and its expression is negatively correlated with that of EGFR, suggesting that it may be a potential target for breast cancer therapy. Multiple isoforms of ZGPAT are known to exist, including sZIP, which binds to the Mi-2/NuRD complex but lacks the DNA binding component of full-length ZGPAT, thereby antagonizing transcription repression and growth inhibition by ZGPAT.

ZGPAT Antibody - References

Li R, Zhang H, Yu W, et al. ZIP: a novel transcription repressor, represses EGFR oncogene and suppresses breast carcinogenesis. EMBO J. 2009; 28:2763-6.

Yu W, Li R, Gui B, et al. sZIP, an alternative splice variant of ZIP, antagonizes transcription repression and growth inhibition by ZIP. J. Biol. Chem. 2010; 285:14301-7.