

LEMD3 Antibody
Catalog # ASC11406**Specification**

LEMD3 Antibody - Product Information

Application	WB, IHC, IF
Primary Accession	O9Y2U8
Other Accession	NP_055134 , 7706607
Reactivity	Human, Mouse
Host	Rabbit
Clonality	Polyclonal
Isotype	IgG
Application Notes	LEMD3 antibody can be used for detection of LEMD3 by Western blot at 1 µg/mL. Antibody can also be used for immunohistochemistry starting at 2.5 µg/mL. For immunofluorescence start at 5 µg/mL.

LEMD3 Antibody - Additional Information

Gene ID 23592

Target/Specificity

LEMD3; At least three isoforms of LEMD3 are known to exist; this antibody will detect all isoforms. LEMD3 antibody is predicted to not cross-react with LEMD1 and LEMD2

Reconstitution & Storage

LEMD3 antibody can be stored at 4°C for three months and -20°C, stable for up to one year. As with all antibodies care should be taken to avoid repeated freeze thaw cycles. Antibodies should not be exposed to prolonged high temperatures.

Precautions

LEMD3 Antibody is for research use only and not for use in diagnostic or therapeutic procedures.

LEMD3 Antibody - Protein Information

Name LEMD3

Synonyms MAN1

Function

Can function as a specific repressor of TGF-beta, activin, and BMP signaling through its interaction with the R-SMAD proteins. Antagonizes TGF-beta-induced cell proliferation arrest.

Cellular Location

Nucleus inner membrane; Multi-pass membrane protein

Tissue Location

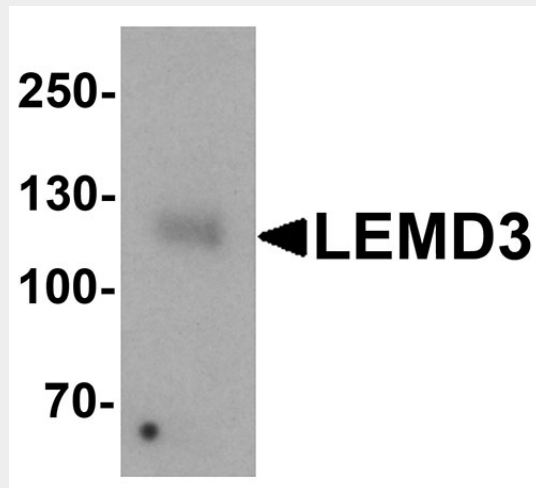
Heart, brain, placenta, lung, liver and skeletal muscle

LEMD3 Antibody - Protocols

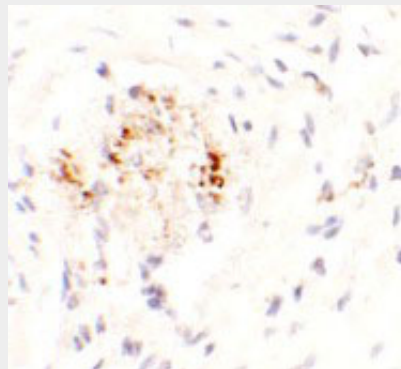
Provided below are standard protocols that you may find useful for product applications.

- [Western Blot](#)
- [Blocking Peptides](#)
- [Dot Blot](#)
- [Immunohistochemistry](#)
- [Immunofluorescence](#)
- [Immunoprecipitation](#)
- [Flow Cytometry](#)
- [Cell Culture](#)

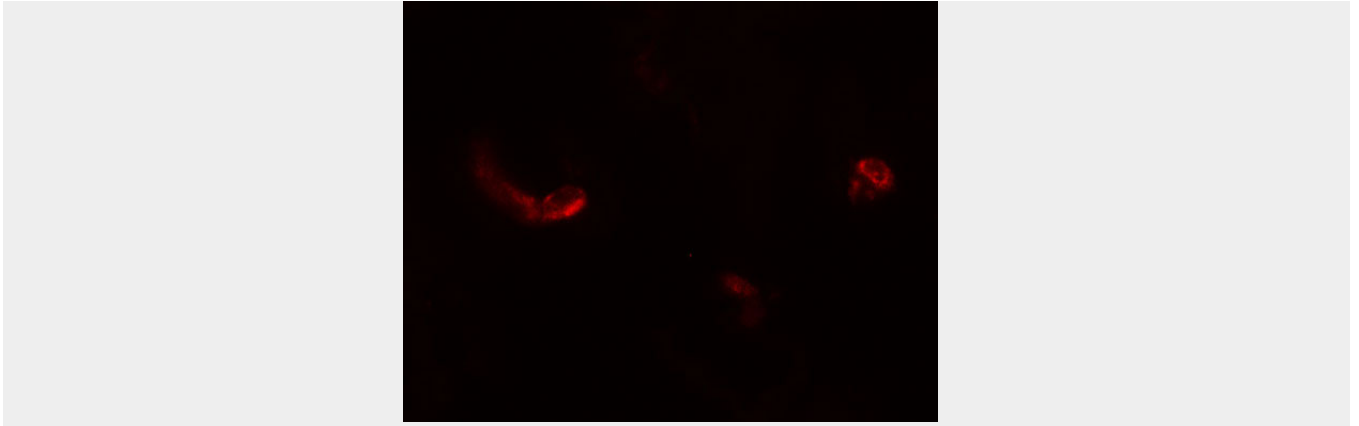
LEMD3 Antibody - Images



Western blot analysis of LEMD3 in human colon tissue lysate with LEMD3 antibody at 1 µg/mL.



Immunohistochemistry of LEMD3 in human colon tissue with LEMD3 antibody at 2.5 µg/mL.



Immunofluorescence of LEMD3 in human colon tissue with LEMD3 antibody at 5 μ g/mL.

LEM3 Antibody - Background

LEM3 Antibody: LEM3 (LEM domain-containing 3) is a lem-domain containing protein, also known as MAN1, whose loss of function results in disorders characterized by osteopoikilosis, Buschke-Ollendorff syndrome, and melorheostosis. LEM3 is an inner nuclear membrane protein that interacts with BMP and activin-TGF-beta receptor-activated Smads and antagonizes TGF-beta signaling in human cells.

LEM3 Antibody - References

Hellemans J, Preobrazhenska O, Willaert A, et al. Loss-of-function mutations in LEM3 result in osteopoikilosis, Buschke-Ollendorff syndrome, and melorheostosis. *Nat. Genet.* 2004; 36:1213-8.