

**ECRG4 Antibody**  
Catalog # ASC11387**Specification****ECRG4 Antibody - Product Information**

Application	WB, ICC
Primary Accession	<a href="#">O9H1Z8</a>
Other Accession	<a href="#">O9H1Z8</a> , <a href="#">84417</a>
Reactivity	Human, Mouse, Rat
Host	Rabbit
Clonality	Polyclonal
Isotype	IgG
Application Notes	ECRG4 antibody can be used for detection of ECRG4 by Western blot at 1 - 2 µg/mL. Antibody can also be used for immunocytochemistry starting at 5 µg/mL.

**ECRG4 Antibody - Additional Information**Gene ID **84417****Target/Specificity**

ECRG4 antibody was raised against a 20 amino acid synthetic peptide near the carboxy terminus of human ECRG4. The immunogen is located within the last 50 amino acids of ECRG4.

**Reconstitution & Storage**

ECRG4 antibody can be stored at 4°C for three months and -20°C, stable for up to one year. As with all antibodies care should be taken to avoid repeated freeze thaw cycles. Antibodies should not be exposed to prolonged high temperatures.

**Precautions**

ECRG4 Antibody is for research use only and not for use in diagnostic or therapeutic procedures.

**ECRG4 Antibody - Protein Information**Name ECRG4 ([HGNC:24642](#))

Synonyms C2orf40

**Function**

Probable hormone that may attenuate cell proliferation and induce senescence of oligodendrocyte and neural precursor cells in the central nervous system (By similarity). ECRG4-induced senescence is characterized by G1 arrest, RB1 dephosphorylation and accelerated CCND1 and CCND3 proteasomal degradation (By similarity).

**Cellular Location**

Secreted. Cytoplasm. Apical cell membrane

**Tissue Location**

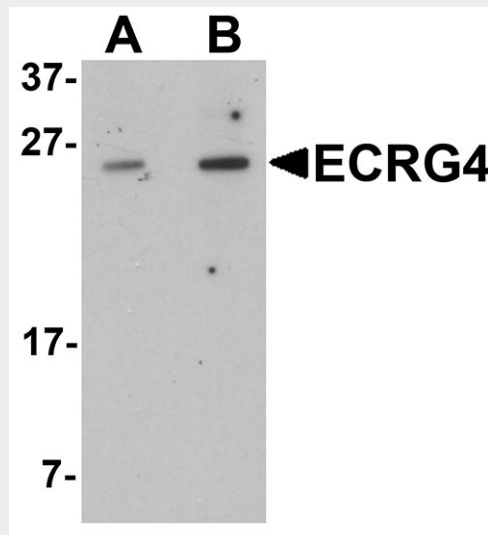
Expressed in the brain, with expression in the epithelial cell layer of the choroid plexus (at protein level)

### ECRG4 Antibody - Protocols

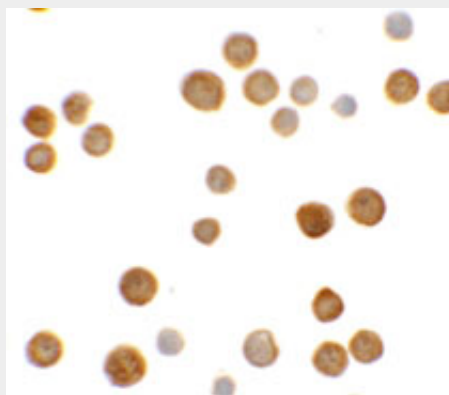
Provided below are standard protocols that you may find useful for product applications.

- [Western Blot](#)
- [Blocking Peptides](#)
- [Dot Blot](#)
- [Immunohistochemistry](#)
- [Immunofluorescence](#)
- [Immunoprecipitation](#)
- [Flow Cytometry](#)
- [Cell Culture](#)

### ECRG4 Antibody - Images



Western blot analysis of ECRG4 in HeLa cell lysate with ECRG4 antibody at (A) 1 and (B) 2 µg/mL.



Immunocytochemistry of ECRG4 in HeLa cells with ECRG4 antibody at 5 µg/mL.

### ECRG4 Antibody - Background

ECRG4 Antibody: The esophageal cancer-related gene 4 (ECRG4), also known as Augurin, was

identified through differential display screening between esophageal cancer and normal tissue. Hypermethylation of CpG sites in the ECRG4 promoter correlate with ECRG4 downregulation in numerous esophageal squamous cell carcinoma tissues.. In transfected cells, overexpression of ECRG4 induced G1 arrest, dephosphorylation of Rb and decreased expression of cyclins D1 and D3. Increased expression of ECRG4 in aged mouse brain is observed compared with young mouse brain. The increased ECRG4 level was accompanied by elevated senescence-associated acidic beta-galactosidase activity, suggesting that ECRG4 is involved in cellular differentiation and senescence.

#### **ECRG4 Antibody - References**

Su T, Liu H, and Lu S. Cloning and identification of cDNA fragments related to human esophageal cancer. *Zhonghua Zhong Liu Za Zhi* 1998; 20:254-7.

Yue CM, Deng DJ, Bi MX, et al. Expression of ECRG4, a novel esophageal cancer-related gene, downregulated by CpG island hypermethylation in human esophageal squamous cell carcinoma. *World J. Gastroenterol.* 2003; 9:1174-8.

Kujuro Y, Suzuki N, and Kondo T. Esophageal cancer-related gene 4 is a secreted inducer of cell senescence expressed by aged CNS precursor cells. *Proc. Natl. Acad. Sci. USA* 2010; 107:8259-64.