

**EI24 Antibody**  
Catalog # ASC11374**Specification**

---

**EI24 Antibody - Product Information**

Application	<b>WB, IHC</b>
Primary Accession	<a href="#">O14681</a>
Other Accession	<a href="#">NP_004870</a> , <a href="#">55956766</a>
Reactivity	<b>Human, Mouse, Rat</b>
Host	<b>Rabbit</b>
Clonality	<b>Polyclonal</b>
Isotype	<b>IgG</b>
Application Notes	<b>EI24 antibody can be used for detection of EI24 by Western blot at 1 - 2 µg/mL. Antibody can also be used for immunohistochemistry starting at 5 µg/mL.</b>

**EI24 Antibody - Additional Information**Gene ID **9538****Target/Specificity**

EI24; At least two isoforms of EI24 are known to exist; this antibody will only detect the larger isoform.

**Reconstitution & Storage**

EI24 antibody can be stored at 4°C for three months and -20°C, stable for up to one year. As with all antibodies care should be taken to avoid repeated freeze thaw cycles. Antibodies should not be exposed to prolonged high temperatures.

**Precautions**

EI24 Antibody is for research use only and not for use in diagnostic or therapeutic procedures.

**EI24 Antibody - Protein Information**

Name EI24

Synonyms PIG8

**Function**

Acts as a negative growth regulator via p53-mediated apoptosis pathway. Regulates formation of degradative autolysosomes during autophagy (By similarity).

**Cellular Location**

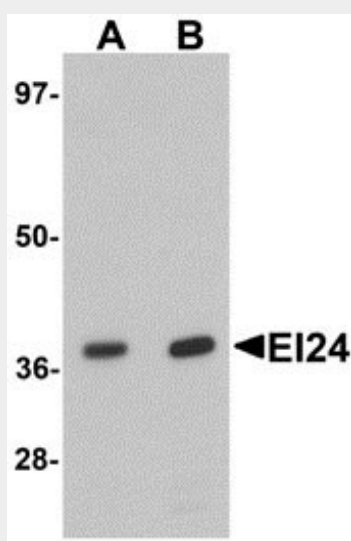
Nucleus membrane; Multi-pass membrane protein. Cytoplasm. Endoplasmic reticulum membrane; Multi-pass membrane protein

## EI24 Antibody - Protocols

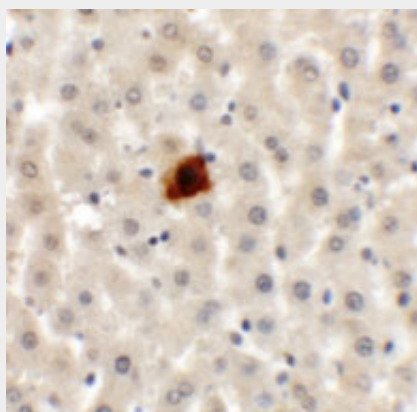
Provided below are standard protocols that you may find useful for product applications.

- [Western Blot](#)
- [Blocking Peptides](#)
- [Dot Blot](#)
- [Immunohistochemistry](#)
- [Immunofluorescence](#)
- [Immunoprecipitation](#)
- [Flow Cytometry](#)
- [Cell Culture](#)

## EI24 Antibody - Images



Western blot analysis of EI24 in rat liver tissue lysate with EI24 antibody at (A) 1 and (B) 2 µg/mL.



Immunohistochemistry of EI24 in rat liver tissue with EI24 antibody at 5 µg/mL.

## EI24 Antibody - Background

**EI24 Antibody:** The etoposide-induced 24 (EI24) protein is an immediate-early induction target of p53-mediated apoptosis and functions as a tumor suppressor. EI24 contains six transmembrane domains and is localized to the endoplasmic reticulum (ER). It binds to Bcl-2 and may contribute to apoptosis by modulating the activity and function of Bcl-2. EI24 is highly mutated in aggressive breast cancers and its loss in breast cancer tissue correlates with tumor invasiveness. Similar

findings in invasive cervical carcinoma suggest that EI24 may be a promising therapeutic target in the treatment of invasive cancer.

### **EI24 Antibody - References**

Lehar SM, Nacht M, Jacks T, et al. Identification and cloning of EI24, a gene induced by p53 in etoposide-treated cells. *Oncogene* 1996; 12:1181-7.

Gu Z, Flemington C, Chittenden T, et al. ei24, a p53 response gene involved in growth suppression and apoptosis. *Mol. Cell Biol.* 2000; 20:233-41

Zhao X, Ayer RE, Davis SL, et al. Apoptosis factor EI24/PIG8 is a novel endoplasmic reticulum-localized Bcl-2-binding protein which is associated with suppression of breast cancer invasiveness. *Cancer Res.* 2005; 65:2125-9.

Mazumder D, Mitra S, Singh RK, et al. Inactivation of CHEK1 and EI24 are associated with the development of invasive cervical carcinoma: clinical and prognostic implications. *Int. J. Cancer* 2010; epub