

Translin Antibody
Catalog # ASC11331**Specification**

Translin Antibody - Product Information

Application	WB, IHC, IF
Primary Accession	Q15631
Other Accession	NP_004613 , 4759270
Reactivity	Human, Mouse, Rat
Host	Rabbit
Clonality	Polyclonal
Isotype	IgG
Application Notes	Translin antibody can be used for detection of Translin by Western blot at 0.5 - 1 µg/mL. Antibody can also be used for immunohistochemistry starting at 5 µg/mL. For immunofluorescence start at 20 µg/mL.

Translin Antibody - Additional Information

Gene ID 7247

Target/Specificity

TSN; At least two isoforms of Translin are known to exist; this antibody will detect both.

Reconstitution & Storage

Translin antibody can be stored at 4 °C, stable for one year. As with all antibodies care should be taken to avoid repeated freeze thaw cycles. Antibodies should not be exposed to prolonged high temperatures.

Precautions

Translin Antibody is for research use only and not for use in diagnostic or therapeutic procedures.

Translin Antibody - Protein Information**Name** TSN**Function**

DNA-binding protein that specifically recognizes consensus sequences at the breakpoint junctions in chromosomal translocations, mostly involving immunoglobulin (Ig)/T-cell receptor gene segments. Seems to recognize single-stranded DNA ends generated by staggered breaks occurring at recombination hot spots.

Cellular Location

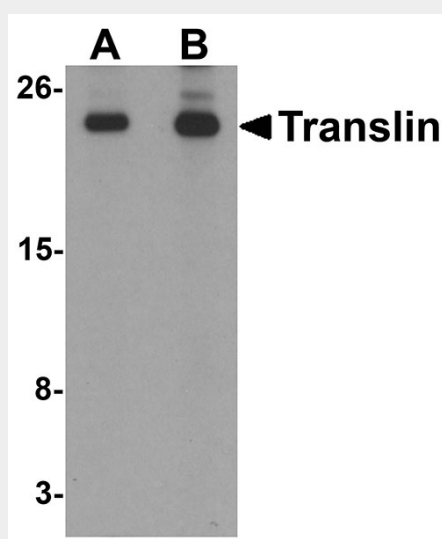
Cytoplasm. Nucleus

Translin Antibody - Protocols

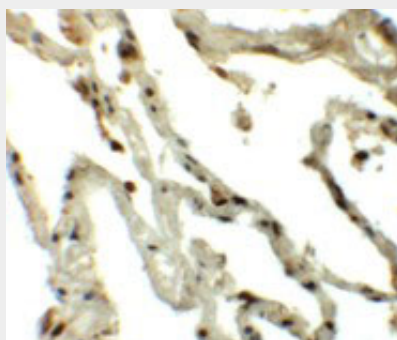
Provided below are standard protocols that you may find useful for product applications.

- [Western Blot](#)
- [Blocking Peptides](#)
- [Dot Blot](#)
- [Immunohistochemistry](#)
- [Immunofluorescence](#)
- [Immunoprecipitation](#)
- [Flow Cytometry](#)
- [Cell Culture](#)

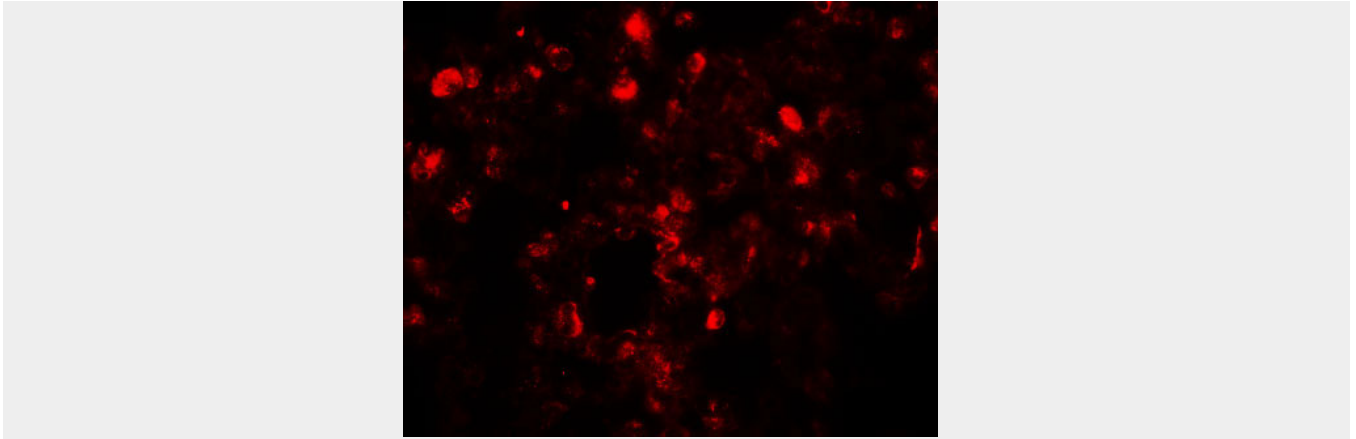
Translin Antibody - Images



Western blot analysis of Translin in rat lung tissue lysate with Translin antibody at (A) 0.5 and (B) 1 µg/mL



Immunohistochemistry of Translin in human lung tissue with Translin antibody at 5 µg/mL.



Immunofluorescence of Translin in human lung tissue with Translin antibody at 20 $\mu\text{g/mL}$.

Translin Antibody - Background

Translin Antibody: Translin is a DNA-binding protein which specifically recognizes conserved target sequences at the breakpoint junction of chromosomal translocations. Translin polypeptides form a multimeric structure that is responsible for its DNA-binding activity. Recombination-associated motifs and translin-binding sites are present at recombination hotspots and may serve as indicators of breakpoints in genes which are fused by translocations. These binding activities may play a crucial role in chromosomal translocation in lymphoid neoplasms. Recent evidence suggests that in combination with a binding partner Trax, Translin binds RNA and mediates trafficking in neurons.

Translin Antibody - References

Aoki K, Susuki K, Sugano T, et al. A novel gene, Translin, encodes a recombination hotspot binding protein associated with chromosomal translocations. *Nat. Genet.* 1995; 10:167-74.
Li Z, Wu Y, and Baraban JM. The Translin/Trax RNA binding complex: clues to function in the nervous system. *Biochim. Biophys. Acta* 2008; 1779:479-85