

**ApoA4 Antibody**  
Catalog # ASC11312**Specification**

---

**ApoA4 Antibody - Product Information**

Application	<b>WB</b>
Primary Accession	<a href="#">P06727</a>
Other Accession	<a href="#">NP_990269</a> , <a href="#">337</a>
Reactivity	<b>Human, Chicken</b>
Host	<b>Rabbit</b>
Clonality	<b>Polyclonal</b>
Isotype	<b>IgG</b>
Application Notes	<b>ApoA4 antibody can be used for detection of ApoA4 by Western blot at 1 µg/mL.</b>

**ApoA4 Antibody - Additional Information**Gene ID **337****Target/Specificity**

ApoA4 antibody was raised against a 20 amino acid synthetic peptide near the carboxy terminus of chicken ApoA4. <br><br>The immunogen is located within the last 50 amino acids of ApoA4.

**Reconstitution & Storage**

ApoA4 antibody can be stored at 4°C for three months and -20°C, stable for up to one year. As with all antibodies care should be taken to avoid repeated freeze thaw cycles. Antibodies should not be exposed to prolonged high temperatures.

**Precautions**

ApoA4 Antibody is for research use only and not for use in diagnostic or therapeutic procedures.

**ApoA4 Antibody - Protein Information****Name** APOA4**Function**

May have a role in chylomicrons and VLDL secretion and catabolism. Required for efficient activation of lipoprotein lipase by ApoC-II; potent activator of LCAT. ApoA-IV is a major component of HDL and chylomicrons.

**Cellular Location**

Secreted.

**Tissue Location**

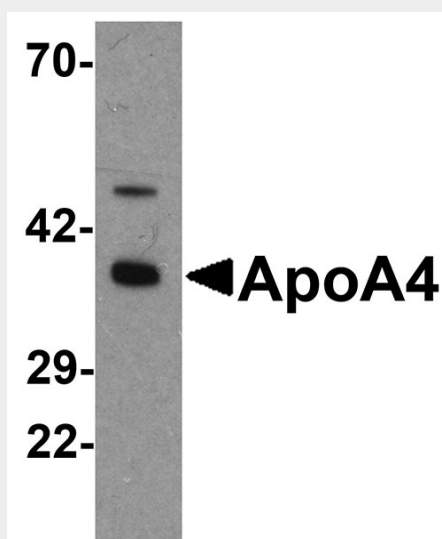
Synthesized primarily in the intestine and secreted in plasma

**ApoA4 Antibody - Protocols**

Provided below are standard protocols that you may find useful for product applications.

- [Western Blot](#)
- [Blocking Peptides](#)
- [Dot Blot](#)
- [Immunohistochemistry](#)
- [Immunofluorescence](#)
- [Immunoprecipitation](#)
- [Flow Cytometry](#)
- [Cell Culture](#)

#### **ApoA4 Antibody - Images**



Western blot analysis of ApoA4 in chicken small intestine tissue lysate with ApoA4 antibody at 1  $\mu\text{g/mL}$

#### **ApoA4 Antibody - Background**

**ApoA4 Antibody:** Apolipoprotein A4 (also known as ApoA-IV) is a plasma protein that is O-linked glycoprotein after proteolytic processing. ApoA4 is a major constituent of HDL and it also can be found on the surface of newly synthesized chylomicrons. The physiological function of ApoA4 is not completely identified so far, but several evidences from vitro studies indicate that this apolipoprotein involves in several steps of the reverse cholesterol transport pathway, which transports cholesterol from peripheral cells back to the liver.

#### **ApoA4 Antibody - References**

Karathanasis SK, Oettgen P, Haddad IA, et al. Structure, evolution, and polymorphisms of the human apolipoprotein A4 gene (APOA4). *Proc. Natl. Acad. Sci.* 1986; 83:8457-61  
Kamboh MI, Friedlaender JS, Ahn YI et al. A common deletion polymorphism in the apolipoprotein A4 gene and its significance in lipid metabolism. *Arterioscler. Thromb.* 1994; 14:656-62.  
Kronenberg F, Stuhlinger M, Trenkwalder E, et al. Low apolipoprotein A-IV plasma concentrations in men with coronary artery disease. *J. Am. Coll. Cardiol.*, 2000; 36:751-7  
Von Eckardstein A, Huang Y, Wu S, et al. Lipoproteins containing apolipoprotein A-IV but not apolipoprotein A-I take up and esterify cell-derived cholesterol in plasma. *Arterioscler Thromb Vasc Biol.* 1995; 15:1755-63.