

ApoA4 Antibody
Catalog # ASC11187**Specification**

ApoA4 Antibody - Product Information

| | |
|-------------------|---|
| Application | WB |
| Primary Accession | P06727 |
| Other Accession | NCBI accession No. AAA51744, 71773110 |
| Reactivity | Human, Chicken |
| Host | Rabbit |
| Clonality | Polyclonal |
| Isotype | IgG |
| Calculated MW | Predicted: 41 kDa |
| Application Notes | Observed: 40 kDa KDa ApoA4 antibody can be used for detection of ApoA4 by Western blot at 1 µg/mL. |

ApoA4 Antibody - Additional Information

| | |
|--------------------|-----|
| Gene ID | 337 |
| Target/Specificity | |
| APOA4; | |

Reconstitution & Storage

ApoA4 antibody can be stored at 4°C for three months and -20°C, stable for up to one year. As with all antibodies care should be taken to avoid repeated freeze thaw cycles. Antibodies should not be exposed to prolonged high temperatures.

Precautions

ApoA4 Antibody is for research use only and not for use in diagnostic or therapeutic procedures.

ApoA4 Antibody - Protein Information

Name APOA4

Function

May have a role in chylomicrons and VLDL secretion and catabolism. Required for efficient activation of lipoprotein lipase by ApoC-II; potent activator of LCAT. ApoA-IV is a major component of HDL and chylomicrons.

Cellular Location

Secreted.

Tissue Location

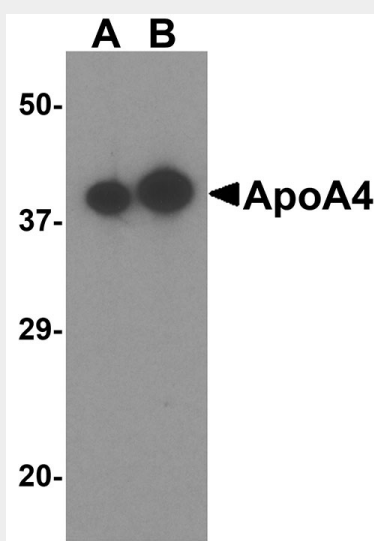
Synthesized primarily in the intestine and secreted in plasma

ApoA4 Antibody - Protocols

Provided below are standard protocols that you may find useful for product applications.

- [Western Blot](#)
- [Blocking Peptides](#)
- [Dot Blot](#)
- [Immunohistochemistry](#)
- [Immunofluorescence](#)
- [Immunoprecipitation](#)
- [Flow Cytometry](#)
- [Cell Culture](#)

ApoA4 Antibody - Images



Western blot analysis of ApoA4 in human testis tissue lysate with ApoA4 antibody at (A) 0.5 and (B) 1 $\mu\text{g/mL}$.

ApoA4 Antibody - Background

ApoA4 Antibody: Apolipoprotein A4 (also known as ApoA-IV) is a plasma protein that is an O-linked glycoprotein after proteolytic processing. ApoA4 is a major constituent of HDL and it also can be found on the surface of newly synthesized chylomicrons. The physiological function of ApoA4 is not completely identified so far, but evidence from several *in vitro* studies indicate that this apolipoprotein is involved in several steps of the reverse cholesterol transport pathway, which transports cholesterol from peripheral cells back to the liver.

ApoA4 Antibody - References

Karathanasis SK, Oettgen P, Haddad IA, et al. Structure, evolution, and polymorphisms of the human apolipoprotein A4 gene (APOA4). *Proc. Natl. Acad. Sci. USA* 1986; 83: 8457-61

Kamboh MI, Friedlaender JS, Ahn YI, et al. A common deletion polymorphism in the apolipoprotein A4 gene and its significance in lipid metabolism. *Arterioscler. Thromb.* 1994; 14: 656-62

Kronenberg F, Stuhlinger M, Trenkwalder E, et al. Low apolipoprotein A-IV plasma concentrations in men with coronary artery disease. *J. Am. Coll. Cardiol.* 2000; 36:751-7.

Von Eckardstein A, Huang Y, Wu S, et al. Lipoproteins containing apolipoprotein A-IV but not apolipoprotein A-I take up and esterify cell-derived cholesterol in plasma. *Arterioscler. Thromb. Vasc. Biol.* 1995; 15:1755-63.