

APC8 Antibody
Catalog # ASC11120**Specification****APC8 Antibody - Product Information**

Application	WB, ICC
Primary Accession	O9UJX2
Other Accession	O9UJX2 , 254763423
Reactivity	Human, Mouse, Rat
Host	Rabbit
Clonality	Polyclonal
Isotype	IgG
Application Notes	APC8 antibody can be used for detection of APC8 by Western blot at 1 - 2 µg/mL. Antibody can also be used for immunocytochemistry starting at 5 µg/mL.

APC8 Antibody - Additional Information

Gene ID	8697
Target/Specificity	
CDC23;	

Reconstitution & Storage

APC8 antibody can be stored at 4°C for three months and -20°C, stable for up to one year. As with all antibodies care should be taken to avoid repeated freeze thaw cycles. Antibodies should not be exposed to prolonged high temperatures.

Precautions

APC8 Antibody is for research use only and not for use in diagnostic or therapeutic procedures.

APC8 Antibody - Protein Information

Name CDC23

Synonyms ANAPC8

Function

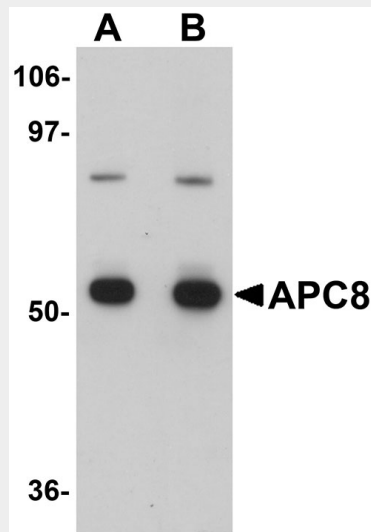
Component of the anaphase promoting complex/cyclosome (APC/C), a cell cycle-regulated E3 ubiquitin ligase that controls progression through mitosis and the G1 phase of the cell cycle (PubMed:18485873). The APC/C complex acts by mediating ubiquitination and subsequent degradation of target proteins: it mainly mediates the formation of 'Lys-11'-linked polyubiquitin chains and, to a lower extent, the formation of 'Lys-48'- and 'Lys-63'-linked polyubiquitin chains (PubMed:18485873). The APC/C complex catalyzes assembly of branched 'Lys-11'-/'Lys-48'-linked branched ubiquitin chains on target proteins (PubMed:29033132).

APC8 Antibody - Protocols

Provided below are standard protocols that you may find useful for product applications.

- [Western Blot](#)
- [Blocking Peptides](#)
- [Dot Blot](#)
- [Immunohistochemistry](#)
- [Immunofluorescence](#)
- [Immunoprecipitation](#)
- [Flow Cytometry](#)
- [Cell Culture](#)

APC8 Antibody - Images



Western blot analysis of APC8 in K562 cell lysate with APC8 antibody at (A) 1 and (B) 2 µg/mL.



Immunocytochemistry of APC8 in K562 cells with APC8 antibody at 5 µg/mL.

APC8 Antibody - Background

APC8 Antibody: Cell cycle regulated protein ubiquitination and degradation within subcellular domains is thought to be essential for the normal progression of mitosis. APC8 is a highly conserved component of the anaphase promoting complex/cyclosome (APC/C), a cell cycle-regulated E3 ubiquitin ligase that controls progression through mitosis and the G1 phase of the cell cycle. APC/C

is responsible for degrading anaphase inhibitors, mitotic cyclins, and spindle-associated proteins ensuring that events of mitosis take place in proper sequence. The individual APC/C components mRNA and protein levels are expressed at approximately the same levels in most tissues and cell lines, suggesting that they perform their functions as part of a complex. In *Drosophila*, silencing of APC8 results in developmental delay and pupal lethality with elevated levels of apoptosis, high mitotic index, and delayed or blocked mitosis.

APC8 Antibody - References

JM Peters. The anaphase promoting complex/cyclosome: a machine designed to destroy. *Nat. Rev. Mol. Cell Biol.*2006; 7:644-56.
Jorgensen PM, Graslund S, Betz R, et al. Characterisation of the human APC1, the largest subunit of the anaphase-promoting complex. *Gene*2001; 262:51-9.
Pal M, Nagy O, Menesi D, et al. Structurally related TPR subunits contribute differently to the function of the anaphase-promoting complex in *Drosophila melanogaster*. *J. Cell Sci.*2007; 120:3238-48.