

LYRM3 Antibody
Catalog # ASC11093

Specification

LYRM3 Antibody - Product Information

Application	WB, IHC, IF
Primary Accession	Q9Y6M9
Other Accession	Q9Y6M9 , 8134589
Reactivity	Human, Mouse, Rat
Host	Rabbit
Clonality	Polyclonal
Isotype	IgG
Application Notes	LYRM3 antibody can be used for detection of LYRM3 by Western blot at 1 - 2 µg/mL. Antibody can also be used for immunohistochemistry starting at 5 µg/mL. For immunofluorescence start at 20 µg/mL.

LYRM3 Antibody - Additional Information

Gene ID	4715
Target/Specificity	
NDUFB9;	

Reconstitution & Storage

LYRM3 antibody can be stored at 4°C for three months and -20°C, stable for up to one year. As with all antibodies care should be taken to avoid repeated freeze thaw cycles. Antibodies should not be exposed to prolonged high temperatures.

Precautions

LYRM3 Antibody is for research use only and not for use in diagnostic or therapeutic procedures.

LYRM3 Antibody - Protein Information

Name NDUFB9

Synonyms LYRM3, UQOR22

Function

Accessory subunit of the mitochondrial membrane respiratory chain NADH dehydrogenase (Complex I), that is believed to be not involved in catalysis. Complex I functions in the transfer of electrons from NADH to the respiratory chain. The immediate electron acceptor for the enzyme is believed to be ubiquinone.

Cellular Location

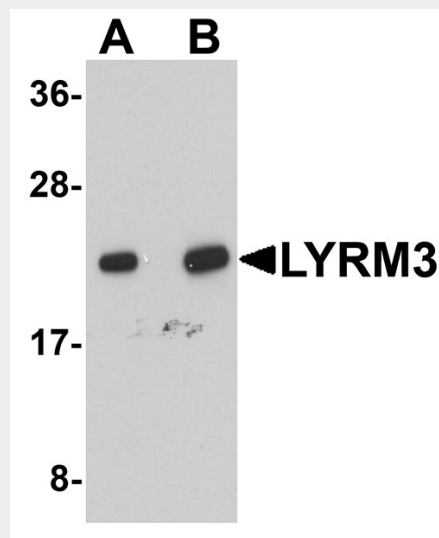
Mitochondrion inner membrane; Peripheral membrane protein; Matrix side

LYRM3 Antibody - Protocols

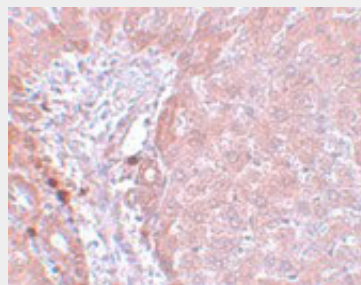
Provided below are standard protocols that you may find useful for product applications.

- [Western Blot](#)
- [Blocking Peptides](#)
- [Dot Blot](#)
- [Immunohistochemistry](#)
- [Immunofluorescence](#)
- [Immunoprecipitation](#)
- [Flow Cytometry](#)
- [Cell Culture](#)

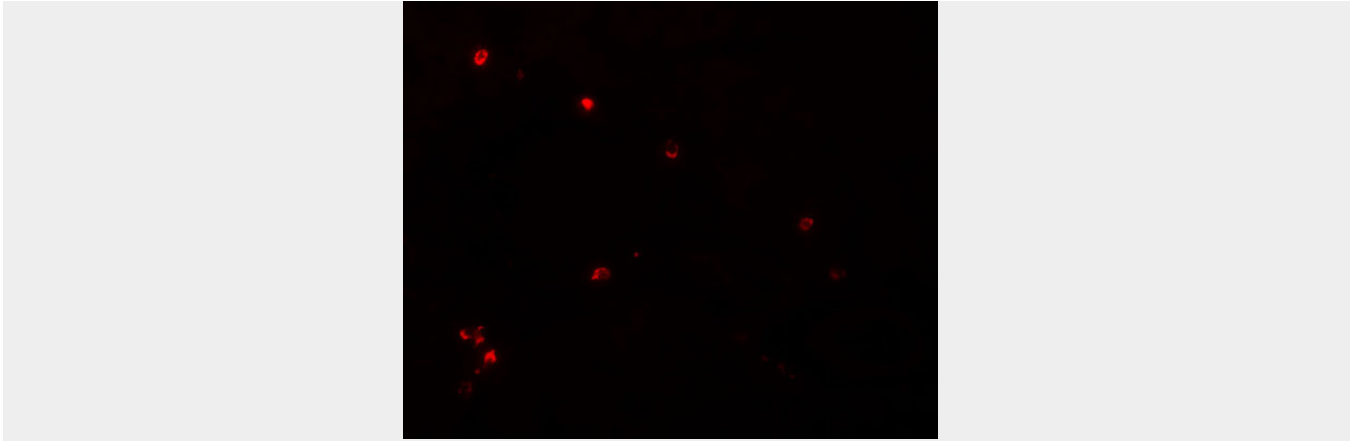
LYRM3 Antibody - Images



Western blot analysis of LYRM3 in human liver tissue lysate with LYRM3 antibody at (A) 1 and (B) 2 $\mu\text{g/mL}$.



Immunohistochemistry of LYRM3 in rat liver tissue with LYRM3 antibody at 5 $\mu\text{g/mL}$.



Immunofluorescence of LYRM3 in rat liver tissue with LYRM3 antibody at 20 µg/mL.

LYRM3 Antibody - Background

LYRM3 Antibody: LYRM3, also known as NADH dehydrogenase (ubiquinone) 1 beta subcomplex 9 (NDUFB9), is a ubiquitously expressed LYR-motif containing protein. It has been suggested to be a candidate gene for the branchio-oto-renal (BOR) syndrome, which is characterized by branchial and renal abnormalities and heredity deafness disorders. Other than its LYR-motif, LYRM3 appears to have no functional or structural relationship to either LYRM1 or LYRM2.

LYRM3 Antibody - References

Lin X, Wells DE, Kimberling WJ, et al. Human NDUFB9 gene: genomic organization and a possible candidate gene associated with deafness disorder mapped to chromosome 8q13. Hum. Heredity 1999; 49:75-80.