

**OCC-1 Antibody**  
Catalog # ASC10838**Specification**

---

**OCC-1 Antibody - Product Information**

Application	WB, IHC, IF
Primary Accession	<a href="#">Q8TAD7</a>
Other Accession	<a href="#">AAH61920</a> , <a href="#">112180576</a>
Reactivity	Human
Host	Rabbit
Clonality	Polyclonal
Isotype	IgG
Application Notes	OCC-1 antibody can be used for detection of OCC-1 by Western blot at 2 µg/mL. In vitro transcription and translation of the OCC-1 cDNA yields polypeptides less than 9 kDa. Despite this, OCC-1 from cell lines is detected at ~28 kDa in SDS-PAGE. Antibody can also be used for immunohistochemistry starting at 2.5 µg/mL. For immunofluorescence start at 20 µg/mL.

**OCC-1 Antibody - Additional Information**

Gene ID	387882
Target/Specificity	
C12orf75;	

**Reconstitution & Storage**

OCC-1 antibody can be stored at 4°C for three months and -20°C, stable for up to one year. As with all antibodies care should be taken to avoid repeated freeze thaw cycles. Antibodies should not be exposed to prolonged high temperatures.

**Precautions**

OCC-1 Antibody is for research use only and not for use in diagnostic or therapeutic procedures.

**OCC-1 Antibody - Protein Information**

**Name** OCC1

**Synonyms** C12orf75

**Tissue Location**

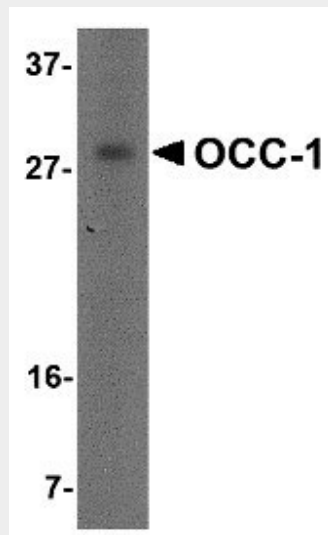
High expression in placenta, skeletal muscle, kidney and pancreas tissues. Absent or very faint expression in heart, brain, lung and liver. Expressed during adipogenic differentiation of mesenchymal stem cells (at protein level)

## OCC-1 Antibody - Protocols

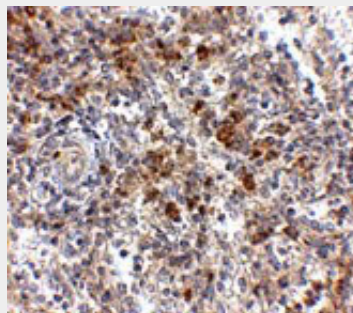
Provided below are standard protocols that you may find useful for product applications.

- [Western Blot](#)
- [Blocking Peptides](#)
- [Dot Blot](#)
- [Immunohistochemistry](#)
- [Immunofluorescence](#)
- [Immunoprecipitation](#)
- [Flow Cytometry](#)
- [Cell Culture](#)

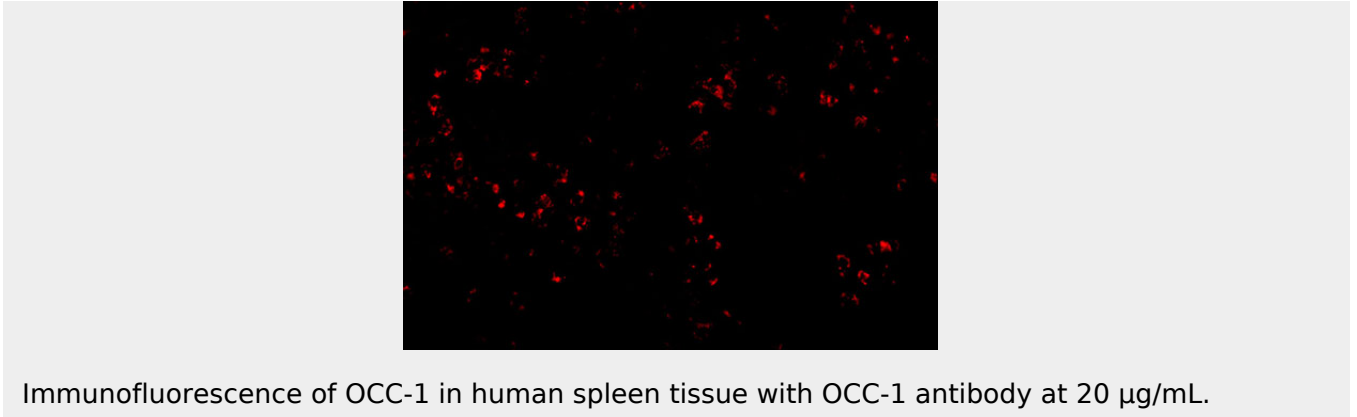
## OCC-1 Antibody - Images



Western blot analysis of OCC-1 in human spleen tissue lysate with OCC-1 antibody at 2  $\mu$ g/mL.



Immunohistochemistry of OCC-1 in human spleen tissue with OCC-1 antibody at 2.5  $\mu$ g/mL.



### **OCC-1 Antibody - Background**

OCC-1 Antibody: OCC-1 (Overexpressed in colon carcinoma-1) was initially identified as a novel human cDNA overexpressed in a colon carcinoma cell line. Elevated levels of OCC-1 mRNA were observed in three of eight colon carcinomas, suggesting that OCC-1 may be a hallmark of only a subset of colon carcinomas. It is highly expressed in skeletal muscle, kidney, placenta, and pancreas tissues, with low to no expression in heart, brain, lung and liver tissues. At least two different OCC-1 mRNA species are known to exist.

### **OCC-1 Antibody - References**

Pibouin L, Villaudy J, Ferbus D, et al. Cloning of the mRNA of overexpression in colon-carcinoma-1: a sequence overexpressed in a subset of colon carcinomas. *Cancer Genet. Cytogenet.* 2002; 133:55-60.