

**Precerebellin Antibody**  
Catalog # ASC10347**Specification****Precerebellin Antibody - Product Information**

Application	<b>WB, IHC</b>
Primary Accession	<a href="#">P23435</a>
Other Accession	<a href="#">P23435</a> , <a href="#">116114</a>
Reactivity	<b>Human, Mouse, Rat</b>
Host	<b>Rabbit</b>
Clonality	<b>Polyclonal</b>
Isotype	<b>IgG</b>
Application Notes	<b>Precerebellin antibody can be used for the detection of precerebellin by Western blot at 2 - 4 µg/mL. Antibody can also be used for immunohistochemistry starting at 2 µg/mL.</b>

**Precerebellin Antibody - Additional Information**Gene ID **869****Other Names**

Precerebellin Antibody: Cerebellin-1, Precerebellin, CER, cerebellin 1 precursor

**Target/Specificity**

CBLN1;

**Reconstitution & Storage**

Precerebellin antibody can be stored at 4°C for three months and -20°C, stable for up to one year. As with all antibodies care should be taken to avoid repeated freeze thaw cycles. Antibodies should not be exposed to prolonged high temperatures.

**Precautions**

Precerebellin Antibody is for research use only and not for use in diagnostic or therapeutic procedures.

**Precerebellin Antibody - Protein Information****Name** CBLN1**Function**

Required for synapse integrity and synaptic plasticity. During cerebellar synapse formation, essential for the matching and maintenance of pre- and post-synaptic elements at parallel fiber-Purkinje cell synapses, the establishment of the proper pattern of climbing fiber-Purkinje cell innervation, and induction of long-term depression at parallel fiber-Purkinje cell synapses. Plays a role as a synaptic organizer that acts bidirectionally on both pre- and post-synaptic components. On the one hand induces accumulation of synaptic vesicles in the pre-synaptic part by binding with NRXN1 and in other hand induces clustering of GRID2 and its associated proteins at the

post-synaptic site through association of GRID2. NRXN1-CBLN1-GRID2 complex directly induces parallel fiber protrusions that encapsulate spines of Purkinje cells leading to accumulation of GRID2 and synaptic vesicles. Required for CBLN3 export from the endoplasmic reticulum and secretion (By similarity). NRXN1-CBLN1-GRID2 complex mediates the D- Serine-dependent long term depression signals and AMPA receptor endocytosis (PubMed:<a href="http://www.uniprot.org/citations/27418511" target="\_blank">27418511</a>). Essential for long-term maintenance but not establishment of excitatory synapses (By similarity). Inhibits the formation and function of inhibitory GABAergic synapses in cerebellar Purkinje cells (By similarity).

#### Cellular Location

Secreted {ECO:0000250|UniProtKB:Q9R171}. Postsynaptic cell membrane {ECO:0000250|UniProtKB:Q9R171}

#### Tissue Location

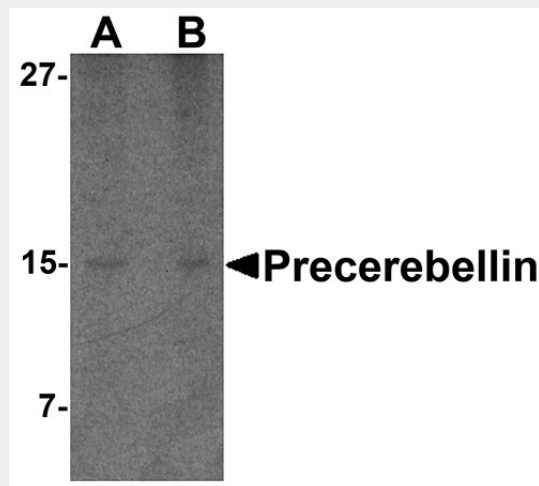
In the Purkinje cells postsynaptic structures. In the cerebellum, cerebellin is much less abundant than [des-Ser1]- cerebellin

### Precerebellin Antibody - Protocols

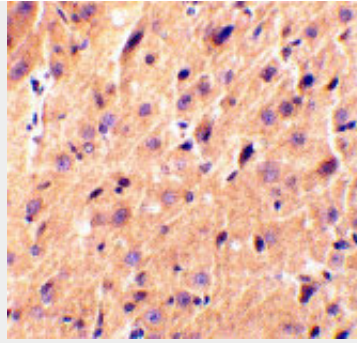
Provided below are standard protocols that you may find useful for product applications.

- [Western Blot](#)
- [Blocking Peptides](#)
- [Dot Blot](#)
- [Immunohistochemistry](#)
- [Immunofluorescence](#)
- [Immunoprecipitation](#)
- [Flow Cytometry](#)
- [Cell Culture](#)

### Precerebellin Antibody - Images



Western blot analysis of precerebellin in mouse cerebellum lysate with precerebellin antibody at (A) 2 and (B) 4 µg/mL.



Immunohistochemical staining of rat brain tissue using precerebellin antibody at 2 µg/mL.

### **Precerebellin Antibody - Background**

**Precerebellin Antibody:** Precerebellin is the precursor of the brain-specific hexadecapeptide cerebellin, a protein with substantial similarity to the globular region of the B chain of complement component C1q. Cerebellin exerts neuromodulatory functions by directly stimulating norepinephrine release via the adenylate cyclase/pka- dependent signaling pathway; and indirectly enhances adrenocortical secretion *in vivo*, through a paracrine mechanism involving medullary catecholamine release. The active form of precerebellin is highly enriched in postsynaptic structures of cerebellar Purkinje cells in cartwheel neurons of the dorsal cochlear nucleus. Because precerebellin belongs to the C1q/tumor necrosis factor superfamily of secreted proteins and has similarity to adiponectin and CTRP3, it has been suggested that precerebellin possesses functions other than those already stated.

### **Precerebellin Antibody - References**

Urade Y, Oberdick J, Molinar-Rode R, et al. Precerebellin is a cerebellum-specific protein with similarity to the globular component C1q B chain. *Proc. Natl. Acad. Sci. USA* 1991; 88:1069-73.  
Mazzocchi G, Andreis PG, De Caro R, et al. Cerebellin enhances *in vitro* secretory activity of human adrenal gland. *J. Clin. Endocrinol. Metab.* 1999; 84:632-5.  
Albertin G, Malendowicz LK, Macchi C, et al. Cerebellin stimulates the secretory activity of the rat adrenal gland: *in vitro* and *in vivo* studies. *Neuropeptides* 2000; 34:7-11.  
Shamji AF, Ngheim P, and Schreiber SL. Integration of growth factor and nutrient signaling: implications for cancer biology. *Proc. Natl. Acad. Sci. USA* 1985; 82:7145-8.