

ILPIP Antibody
Catalog # ASC10213**Specification****ILPIP Antibody - Product Information**

Application	WB, IHC
Primary Accession	O9C0K7
Other Accession	NP_061041 , 13027388
Reactivity	Human
Host	Rabbit
Clonality	Polyclonal
Isotype	IgG
Application Notes	ILPIP antibody can be used for the detection of ILPIP by Western blot at 0.5 to 2 µg/mL. Aa 34 kDa band can be detected. Antibody can also be used for immunohistochemistry starting at 5 µg/mL.

ILPIP Antibody - Additional Information

Gene ID 55437

Other Names

ILPIP Antibody: PAPK, ILPIP, ILPIPA, ALS2CR2, CALS-21, PRO1038, STE20-related kinase adapter protein beta, Amyotrophic lateral sclerosis 2 chromosomal region candidate gene 2 protein, STRAD beta, STE20-related kinase adaptor beta

Target/Specificity

STRADB; Anti-ILPIP is specific for human ILPIP only.

Reconstitution & Storage

ILPIP antibody can be stored at 4°C for three months and -20°C, stable for up to one year. As with all antibodies care should be taken to avoid repeated freeze thaw cycles. Antibodies should not be exposed to prolonged high temperatures.

Precautions

ILPIP Antibody is for research use only and not for use in diagnostic or therapeutic procedures.

ILPIP Antibody - Protein Information

Name STRADB

Synonyms ALS2CR2, ILPIP

Function

Pseudokinase which, in complex with CAB39/MO25 (CAB39/MO25alpha or CAB39L/MO25beta), binds to and activates STK11/LKB1. Adopts a closed conformation typical of active protein kinases and binds STK11/LKB1 as a pseudosubstrate, promoting conformational change of STK11/LKB1 in

an active conformation (By similarity).

Cellular Location

Nucleus. Cytoplasm

Tissue Location

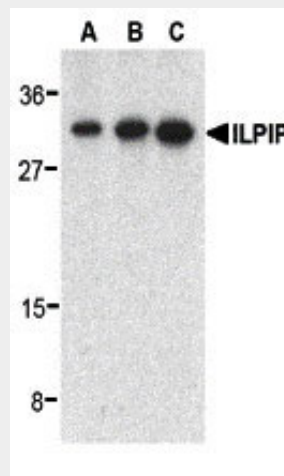
Highly expressed in heart, skeletal muscle, testis, liver and colon.

ILPIP Antibody - Protocols

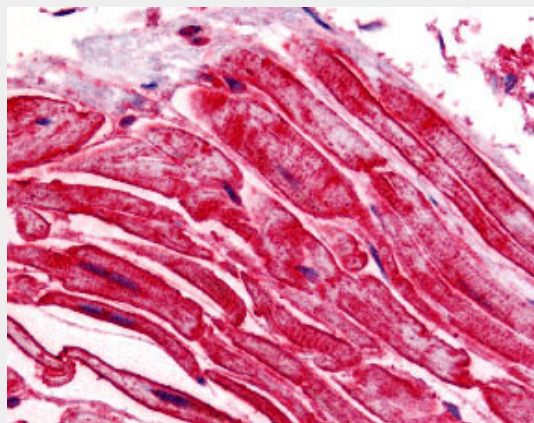
Provided below are standard protocols that you may find useful for product applications.

- [Western Blot](#)
- [Blocking Peptides](#)
- [Dot Blot](#)
- [Immunohistochemistry](#)
- [Immunofluorescence](#)
- [Immunoprecipitation](#)
- [Flow Cytometry](#)
- [Cell Culture](#)

ILPIP Antibody - Images



Western blot analysis of ILPIP in human heart lysate with ILPIP antibody at 0.5 (lane A), 1 (lane B), and 2 (lane C) $\mu\text{g}/\text{mL}$, respectively.



Immunohistochemistry of ILPIP in human heart tissue with ILPIP antibody at 5 µg/mL.

ILPIP Antibody - Background

ILPIP Antibody: ILPIP (ILP-interacting protein) has recently been shown to interact with XIAP, a member of the IAP (Inhibitor of Apoptosis) protein family. Together, these two proteins synergistically activate the TAK1/JNK1 signal transduction pathway, which acts to protect against the interleukin-1 β converting enzyme of Fas-induced apoptosis. This protein was independently isolated and characterized as polyploidy-associated protein kinase (PAPK), a member of the Ste20/germinal center kinase family that modulates cytoskeletal organization and cell survival, suggesting that its protective role may be a function of its kinase activity. Although two mRNA sequences have been isolated, only the shorter isoform has been observed.

ILPIP Antibody - References

Sanna MG, Correia JS, Luo Y, et al. (2002) ILPIP, a novel anti-apoptotic protein that enhances XIAP-mediated activation of JNK and protection of apoptosis. *J. Biol. Chem.* 277:30454-62.
Sanna MG, Duckett CS, Richter BW, et al. (1998) Selective activation of JNK1 is necessary for the anti-apoptotic activity of hILP. *Proc. Natl. Acad. Sci USA* 95:6015-20.
Nishigaki K, Thompson D, Yugawa T, et al. (2003) Identification and characterization of a novel Ste20/germinal center kinase-related kinase, polyploidy-associated protein kinase. *J. Biol. Chem.* 278:13520-30.