

**ILPIP Antibody**  
Catalog # ASC10212**Specification****ILPIP Antibody - Product Information**

Application	WB, IHC
Primary Accession	<a href="#">O9C0K7</a>
Other Accession	<a href="#">NP_061041</a> , <a href="#">13027388</a>
Reactivity	Human, Mouse, Rat
Host	Rabbit
Clonality	Polyclonal
Isotype	IgG
Application Notes	ILPIP antibody can be used for the detection of ILPIP by Western blot at 1 to 2 µg/mL. Antibody can also be used for immunohistochemistry starting at 10 µg/mL.

**ILPIP Antibody - Additional Information**

Gene ID 55437

**Other Names**

ILPIP Antibody: PAPK, ILPIP, ILPIPA, ALS2CR2, CALS-21, PRO1038, STE20-related kinase adapter protein beta, Amyotrophic lateral sclerosis 2 chromosomal region candidate gene 2 protein, STRAD beta, STE20-related kinase adaptor beta

**Target/Specificity**

STRADB;

**Reconstitution & Storage**

ILPIP antibody can be stored at 4°C for three months and -20°C, stable for up to one year. As with all antibodies care should be taken to avoid repeated freeze thaw cycles. Antibodies should not be exposed to prolonged high temperatures.

**Precautions**

ILPIP Antibody is for research use only and not for use in diagnostic or therapeutic procedures.

**ILPIP Antibody - Protein Information**

Name STRADB

Synonyms ALS2CR2, ILPIP

**Function**

Pseudokinase which, in complex with CAB39/MO25 (CAB39/MO25alpha or CAB39L/MO25beta), binds to and activates STK11/LKB1. Adopts a closed conformation typical of active protein kinases and binds STK11/LKB1 as a pseudosubstrate, promoting conformational change of STK11/LKB1 in an active conformation (By similarity).

### Cellular Location

Nucleus. Cytoplasm

### Tissue Location

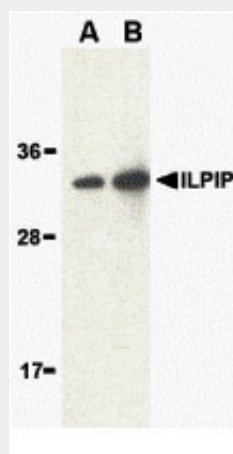
Highly expressed in heart, skeletal muscle, testis, liver and colon.

### ILPIP Antibody - Protocols

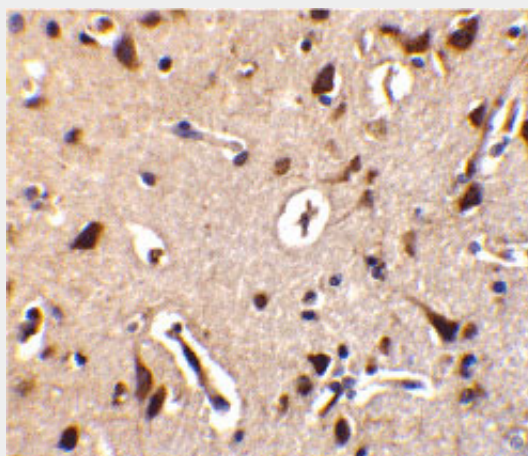
Provided below are standard protocols that you may find useful for product applications.

- [Western Blot](#)
- [Blocking Peptides](#)
- [Dot Blot](#)
- [Immunohistochemistry](#)
- [Immunofluorescence](#)
- [Immunoprecipitation](#)
- [Flow Cytometry](#)
- [Cell Culture](#)

### ILPIP Antibody - Images



Western blot analysis of ILPIP in human brain lysate with ILPIP antibody at (A) 1 and (B) 2 µg/mL.



Immunohistochemistry of ILPIP in human brain tissue with ILPIP antibody at 10 µg/mL.

### **ILPIP Antibody - Background**

ILPIP Antibody: ILPIP (ILP-interacting protein) has recently been shown to interact with XIAP, a member of the IAP (Inhibitor of Apoptosis) protein family. Together, these two proteins synergistically activate the TAK1/JNK1 signal transduction pathway, which acts to protect against the interleukin-1 $\beta$  converting enzyme of Fas-induced apoptosis. This protein was independently isolated and characterized as polyploidy-associated protein kinase (PAPK), a member of the Ste20/germinal center kinase family that modulates cytoskeletal organization and cell survival, suggesting that its protective role may be a function of its kinase activity. Although two mRNA sequences have been isolated, only the shorter isoform has been observed.

### **ILPIP Antibody - References**

Sanna MG, Correia JS, Luo Y, et al. (2002) ILPIP, a novel anti-apoptotic protein that enhances XIAP-mediated activation of JNK and protection of apoptosis. *J. Biol. Chem.* 277:30454-62.

Sanna MG, Duckett CS, Richter BW, et al. (1998) Selective activation of JNK1 is necessary for the anti-apoptotic activity of hILP. *Proc. Natl. Acad. Sci USA* 95:6015-20.

Nishigaki K, Thompson D, Yugawa T, et al. (2003) Identification and characterization of a novel Ste20/germinal center kinase-related kinase, polyploidy-associated protein kinase. *J. Biol. Chem.* 278:13520-30.