

**Anti-Monkeypox virus/MPXV A30L Antibody (A27)**  
**Antibody**  
**Catalog # APR11093**

**Specification**

---

**Anti-Monkeypox virus/MPXV A30L Antibody (A27) - Product Information**

Application	E
Primary Accession	<a href="#">Q8V4U9</a>
Clonality	<b>Monoclonal</b>
Calculated MW	<b>16404</b>

**Anti-Monkeypox virus/MPXV A30L Antibody (A27) - Additional Information**

**Target/Specificity**  
A30L

**Endotoxin**  
□0.001 EU/ μg

**Conjugation**  
None

**Format**  
IgG1

**Molecular Weight (kDa)**  
143.64 kDa

**Formulation**  
0.1 mM Glycine, 0.2 mM NaCl, (tris), pH 5

**Storage**  
-80°C for 2 years under sterile conditions; -20°C for 1 year under sterile conditions; Avoid repeated freeze-thaw cycles.

**Anti-Monkeypox virus/MPXV A30L Antibody (A27) - Protein Information**

**Name** OPG155

**Function**  
Envelope protein required for virus entry into host cell and for cell-cell fusion (syncytium formation).

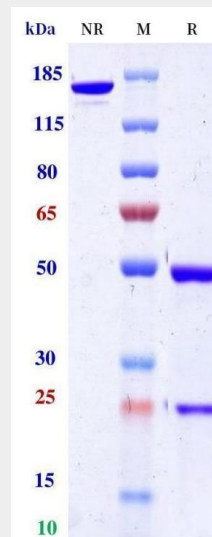
**Cellular Location**  
Virion membrane {ECO:0000250|UniProtKB:P68633}; Single-pass type III membrane protein {ECO:0000250|UniProtKB:P68633} Note=Component of the mature virion (MV) membrane {ECO:0000250|UniProtKB:P68633}

## Anti-Monkeypox virus/MPXV A30L Antibody (A27) - Protocols

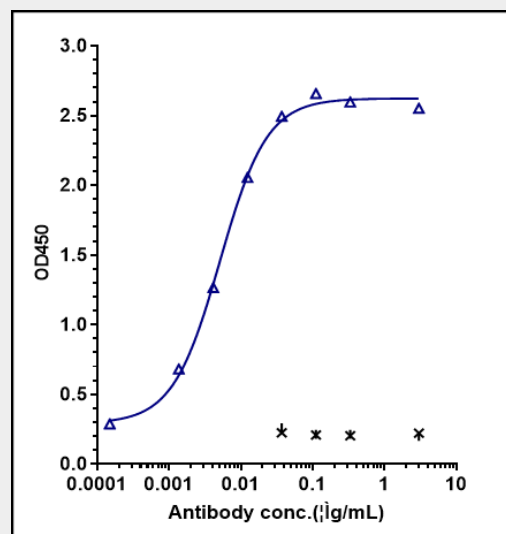
Provided below are standard protocols that you may find useful for product applications.

- [Western Blot](#)
- [Blocking Peptides](#)
- [Dot Blot](#)
- [Immunohistochemistry](#)
- [Immunofluorescence](#)
- [Immunoprecipitation](#)
- [Flow Cytometry](#)
- [Cell Culture](#)

## Anti-Monkeypox virus/MPXV A30L Antibody (A27) - Images



Anti-Monkeypox virus/MPXV A30L Antibody (A27) on SDS-PAGE under reducing (R) condition. The purity of the protein is greater than 95%.



Immobilized Monkeypox Virus A30L, His Tag at 2 µg/mL can bind Anti-Monkeypox virus/MPXV A30L Antibody (A27), EC50=0.005117 µg/mL.

