

**Anti-vWF Reference Antibody (INSERM patent anti-vWF)  
Recombinant Antibody  
Catalog # APR11076**

**Specification**

---

**Anti-vWF Reference Antibody (INSERM patent anti-vWF) - Product Information**

Application	FC, E, FTA
Primary Accession	<a href="#">P04275</a>
Reactivity	Human, Mouse
Clonality	Monoclonal
Isotype	IgG1
Calculated MW	150 KDa

**Anti-vWF Reference Antibody (INSERM patent anti-vWF) - Additional Information**

**Target/Specificity**  
vWF

**Endotoxin**  
< 0.001EU/ µg,determined by LAL method.

**Conjugation**  
Unconjugated

**Expression system**  
CHO Cell

**Format**  
Purified monoclonal antibody supplied in PBS, pH6.0, without preservative.This antibody is purified through a protein A column.

**Anti-vWF Reference Antibody (INSERM patent anti-vWF) - Protein Information**

**Name** VWF

**Synonyms** F8VWF

**Function**  
Important in the maintenance of hemostasis, it promotes adhesion of platelets to the sites of vascular injury by forming a molecular bridge between sub-endothelial collagen matrix and platelet- surface receptor complex GPIb-IX-V. Also acts as a chaperone for coagulation factor VIII, delivering it to the site of injury, stabilizing its heterodimeric structure and protecting it from premature clearance from plasma.

**Cellular Location**  
Secreted. Secreted, extracellular space, extracellular matrix. Note=Localized to storage granules

**Tissue Location**

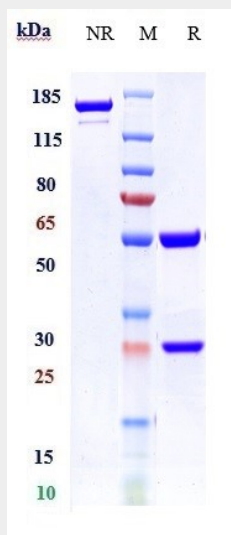
Plasma.

### Anti-vWF Reference Antibody (INSERM patent anti-vWF) - Protocols

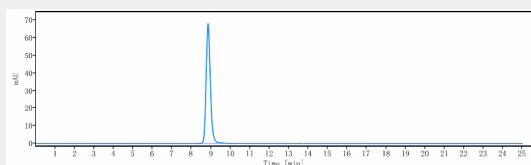
Provided below are standard protocols that you may find useful for product applications.

- [Western Blot](#)
- [Blocking Peptides](#)
- [Dot Blot](#)
- [Immunohistochemistry](#)
- [Immunofluorescence](#)
- [Immunoprecipitation](#)
- [Flow Cytometry](#)
- [Cell Culture](#)

### Anti-vWF Reference Antibody (INSERM patent anti-vWF) - Images



Anti-vWF Reference Antibody (INSERM patent anti-vWF) on SDS-PAGE under reducing (R) condition. The gel was stained with Coomassie Blue. The purity of the protein is greater than 90%



The purity of Anti-vWF Reference Antibody (INSERM patent anti-vWF) is more than 95%, determined by SEC-HPLC.