

---

**Anti-VCAM1 / CD106 Reference Antibody (Hanwha patent anti-VCAM-1)  
Recombinant Antibody  
Catalog # APR11069****Specification**

---

**Anti-VCAM1 / CD106 Reference Antibody (Hanwha patent anti-VCAM-1) - Product Information**

Application	FC, E, FTA
Primary Accession	<a href="#">P19320</a>
Reactivity	Rat, Pig, Human, Mouse
Clonality	Monoclonal
Isotype	IgG2SA
Calculated MW	143.4 KDa

**Anti-VCAM1 / CD106 Reference Antibody (Hanwha patent anti-VCAM-1) - Additional Information****Target/Specificity**  
VCAM1 / CD106**Endotoxin**  
< 0.001EU/ µg,determined by LAL method.**Conjugation**  
Unconjugated**Expression system**  
CHO Cell**Format**  
Purified monoclonal antibody supplied in PBS, pH6.0, without preservative.This antibody is purified through a protein A column.**Anti-VCAM1 / CD106 Reference Antibody (Hanwha patent anti-VCAM-1) - Protein Information****Name** VCAM1**Function**  
Cell adhesion glycoprotein predominantly expressed on the surface of endothelial cells that plays an important role in immune surveillance and inflammation (PubMed:<a href="http://www.uniprot.org/citations/31310649" target="\_blank">31310649</a>). Acts as a major regulator of leukocyte adhesion to the endothelium through interaction with different types of integrins (PubMed:<a href="http://www.uniprot.org/citations/10209034" target="\_blank">10209034</a>). During inflammatory responses, binds ligands on the surface of activated endothelial cells to initiate the activation of calcium channels and the plasma membrane-associated small GTPase RAC1 leading to leukocyte transendothelial migration (PubMed:<a href="http://www.uniprot.org/citations/22970700" target="\_blank">22970700</a>).

Serves also as a quality- control checkpoint for entry into bone marrow by providing a 'don't-eat-me' stamping in the context of major histocompatibility complex (MHC) class-I presentation (PubMed:<a href="http://www.uniprot.org/citations/35210567" target="\_blank">35210567</a>).

#### Cellular Location

[Vascular cell adhesion protein 1]: Cell membrane; Single-pass type I membrane protein

#### Tissue Location

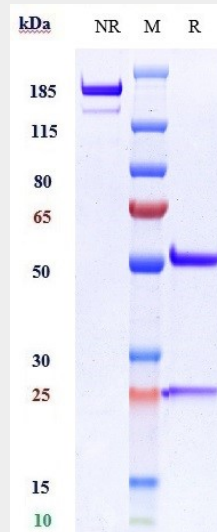
Expressed on inflamed vascular endothelium, as well as on macrophage-like and dendritic cell types in both normal and inflamed tissue

### Anti-VCAM1 / CD106 Reference Antibody (Hanwha patent anti-VCAM-1) - Protocols

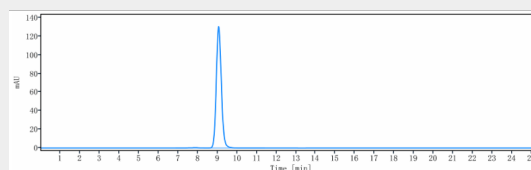
Provided below are standard protocols that you may find useful for product applications.

- [Western Blot](#)
- [Blocking Peptides](#)
- [Dot Blot](#)
- [Immunohistochemistry](#)
- [Immunofluorescence](#)
- [Immunoprecipitation](#)
- [Flow Cytometry](#)
- [Cell Culture](#)

### Anti-VCAM1 / CD106 Reference Antibody (Hanwha patent anti-VCAM-1) - Images



Anti-VCAM1 / CD106 Reference Antibody (Hanwha patent anti-VCAM-1) on SDS-PAGE under reducing (R) condition. The gel was stained with Coomassie Blue. The purity of the protein is greater than 95%



The purity of Anti-VCAM1 / CD106 Reference Antibody (Hanwha patent anti-VCAM-1) is more than

95% ,determined by SEC-HPLC.