

**Anti-TROP2 Reference Antibody (Sacituzumab-MMAE)
Recombinant Antibody
Catalog # APR11066**

Specification

Anti-TROP2 Reference Antibody (Sacituzumab-MMAE) - Product Information

Application	FC, E, FTA
Primary Accession	P09758
Reactivity	Human
Clonality	Monoclonal
Isotype	IgG1
Calculated MW	150 KDa

Anti-TROP2 Reference Antibody (Sacituzumab-MMAE) - Additional Information

Target/Specificity
TROP2

Endotoxin
< 0.001EU/ µg,determined by LAL method.

Conjugation
Unconjugated

Expression system
CHO Cell

Format
Purified monoclonal antibody supplied in PBS, pH6.0, without preservative.This antibody is purified through a protein A column.

Storage
-80°C for 2 years under sterile conditions □ -20°C for 1 year under sterile conditions □ Avoid repeated freeze-thaw cycles.

Anti-TROP2 Reference Antibody (Sacituzumab-MMAE) - Protein Information

Name TACSTD2

Synonyms GA733-1, M1S1, TROP2

Function
May function as a growth factor receptor.

Cellular Location
Membrane; Single-pass type I membrane protein.

Tissue Location

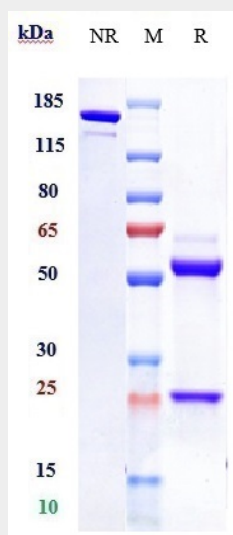
Placenta, pancreatic carcinoma cell lines.

Anti-TROP2 Reference Antibody (Sacituzumab-MMAE) - Protocols

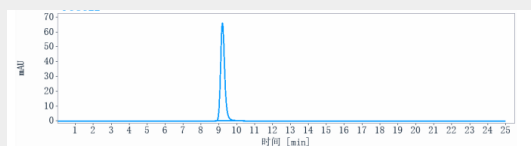
Provided below are standard protocols that you may find useful for product applications.

- [Western Blot](#)
- [Blocking Peptides](#)
- [Dot Blot](#)
- [Immunohistochemistry](#)
- [Immunofluorescence](#)
- [Immunoprecipitation](#)
- [Flow Cytometry](#)
- [Cell Culture](#)

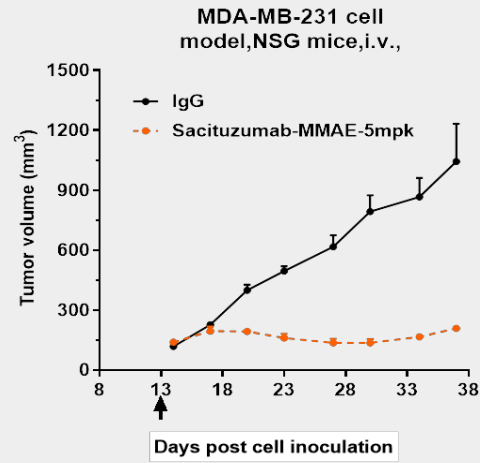
Anti-TROP2 Reference Antibody (Sacituzumab-MMAE) - Images



Anti-TROP2 Reference Antibody (Sacituzumab-MMAE) on SDS-PAGE under reducing (R) condition. The gel was stained with Coomassie Blue. The purity of the protein is greater than 90%



The purity of Anti-TROP2 Reference Antibody (Sacituzumab-MMAE) is more than 95% ,determined by SEC-HPLC.



Sacituzumab-ADC inhibited the tumor growth of MDA-MB-231 on NSG mice. The result showed significant anti-tumor effects, with an tumor inhibition rate (TGI) of 80.0% at 5 mpk at D37.