

**Anti-TM4SF1 Reference Antibody (Beth Israel Patent Anti-TM4SF1)
Recombinant Antibody
Catalog # APR11048**

Specification

Anti-TM4SF1 Reference Antibody (Beth Israel Patent Anti-TM4SF1) - Product Information

Application	FC, E, FTA
Primary Accession	P30408
Reactivity	Human
Clonality	Monoclonal
Isotype	IgG1
Calculated MW	150 KDa

Anti-TM4SF1 Reference Antibody (Beth Israel Patent Anti-TM4SF1) - Additional Information

Target/Specificity
TM4SF1

Endotoxin
< 0.001EU/ µg,determined by LAL method.

Conjugation
Unconjugated

Expression system
CHO Cell

Format
Purified monoclonal antibody supplied in PBS, pH6.0, without preservative.This antibody is purified through a protein A column.

Anti-TM4SF1 Reference Antibody (Beth Israel Patent Anti-TM4SF1) - Protein Information

Name TM4SF1

Synonyms M3S1, TAAL6

Cellular Location
Membrane; Multi-pass membrane protein. Note=Colocalizes with SDCBP2 in the apical region of the cell (PubMed:11102519).

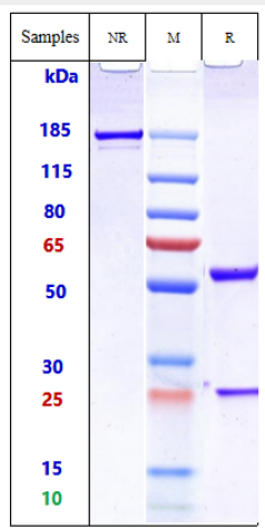
Tissue Location
Highly expressed in lung, breast, colon and ovarian carcinomas. It is also present on some normal cells, endothelial cells in particular

Anti-TM4SF1 Reference Antibody (Beth Israel Patent Anti-TM4SF1) - Protocols

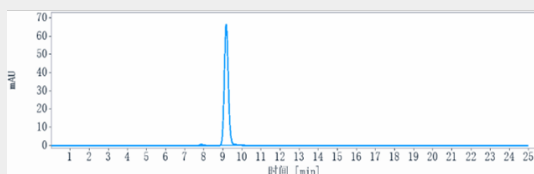
Provided below are standard protocols that you may find useful for product applications.

- [Western Blot](#)
- [Blocking Peptides](#)
- [Dot Blot](#)
- [Immunohistochemistry](#)
- [Immunofluorescence](#)
- [Immunoprecipitation](#)
- [Flow Cytometry](#)
- [Cell Culture](#)

Anti-TM4SF1 Reference Antibody (Beth Israel Patent Anti-TM4SF1) - Images



Anti-TM4SF1 Reference Antibody (Beth Israel Patent Anti-TM4SF1) on SDS-PAGE under reducing (R) condition. The gel was stained with Coomassie Blue. The purity of the protein is greater than 90%



The purity of Anti-TM4SF1 Reference Antibody (Beth Israel Patent Anti-TM4SF1) is more than 95%, determined by SEC-HPLC.