

**Anti-TLR3 / CD283 Reference Antibody (CNT05429)**  
**Recombinant Antibody**  
**Catalog # APR11046**

**Specification**

---

**Anti-TLR3 / CD283 Reference Antibody (CNT05429) - Product Information**

Application	FC, E, FTA
Primary Accession	<a href="#">O15455</a>
Reactivity	Cynomolgus, Human
Clonality	Monoclonal
Isotype	IgG2SA
Calculated MW	145.42 KDa

**Anti-TLR3 / CD283 Reference Antibody (CNT05429) - Additional Information**

**Target/Specificity**  
TLR3 / CD283

**Endotoxin**  
< 0.001EU/ µg,determined by LAL method.

**Conjugation**  
Unconjugated

**Expression system**  
CHO Cell

**Format**  
Purified monoclonal antibody supplied in PBS, pH6.0, without preservative.This antibody is purified through a protein A column.

**Anti-TLR3 / CD283 Reference Antibody (CNT05429) - Protein Information**

**Name** TLR3 ([HGNC:11849](#))

**Function**  
Key component of innate and adaptive immunity. TLRs (Toll- like receptors) control host immune response against pathogens through recognition of molecular patterns specific to microorganisms. TLR3 is a nucleotide-sensing TLR which is activated by double-stranded RNA, a sign of viral infection. Acts via the adapter TRIF/TICAM1, leading to NF-kappa-B activation, IRF3 nuclear translocation, cytokine secretion and the inflammatory response.

**Cellular Location**  
Endoplasmic reticulum membrane; Single-pass type I membrane protein. Endosome membrane. Early endosome

**Tissue Location**  
Expressed at high level in placenta and pancreas. Also detected in CD11c+ immature dendritic

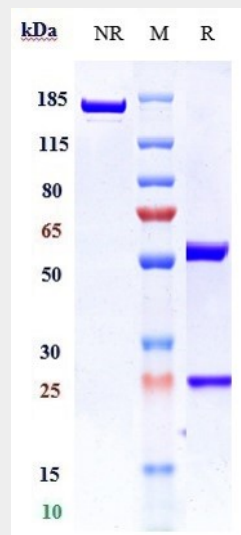
cells. Only expressed in dendritic cells and not in other leukocytes, including monocyte precursors. TLR3 is the TLR that is expressed most strongly in the brain, especially in astrocytes, glia, and neurons

### Anti-TLR3 / CD283 Reference Antibody (CNT05429) - Protocols

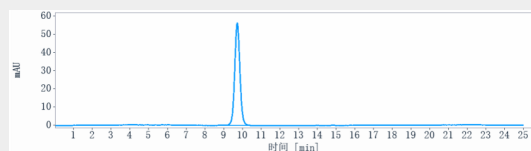
Provided below are standard protocols that you may find useful for product applications.

- [Western Blot](#)
- [Blocking Peptides](#)
- [Dot Blot](#)
- [Immunohistochemistry](#)
- [Immunofluorescence](#)
- [Immunoprecipitation](#)
- [Flow Cytometry](#)
- [Cell Culture](#)

### Anti-TLR3 / CD283 Reference Antibody (CNT05429) - Images



Anti-TLR3 / CD283 Reference Antibody (CNT05429) on SDS-PAGE under reducing (R) condition. The gel was stained with Coomassie Blue. The purity of the protein is greater than 95%



The purity of Anti-TLR3 / CD283 Reference Antibody (CNT05429) is more than 95%, determined by SEC-HPLC.