

**Anti-TEM7R / PLXDC2 Reference Antibody (Fox Chase patent anti-TEM7R)
Recombinant Antibody
Catalog # APR11043**

Specification

Anti-TEM7R / PLXDC2 Reference Antibody (Fox Chase patent anti-TEM7R) - Product Information

Application	FC, E, FTA
Primary Accession	Q6UX71
Reactivity	Human, Mouse
Clonality	Monoclonal
Isotype	IgG1
Calculated MW	145 KDa

Anti-TEM7R / PLXDC2 Reference Antibody (Fox Chase patent anti-TEM7R) - Additional Information

Target/Specificity
TEM7R / PLXDC2

Endotoxin
< 0.001EU/ µg,determined by LAL method.

Conjugation
Unconjugated

Expression system
CHO Cell

Format
Purified monoclonal antibody supplied in PBS, pH6.0, without preservative.This antibody is purified through a protein A column.

Anti-TEM7R / PLXDC2 Reference Antibody (Fox Chase patent anti-TEM7R) - Protein Information

Name PLXDC2

Synonyms TEM7R

Function
May play a role in tumor angiogenesis.

Cellular Location
Membrane; Single-pass type I membrane protein

Tissue Location
Expressed in the endothelial cells of the stroma but not in the endothelial cells of normal colonic

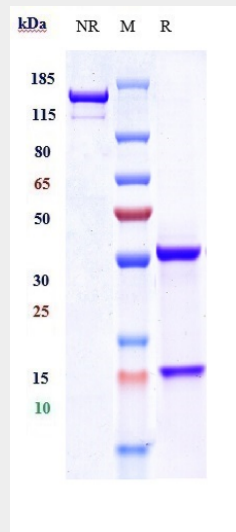
tissue

Anti-TEM7R / PLXDC2 Reference Antibody (Fox Chase patent anti-TEM7R) - Protocols

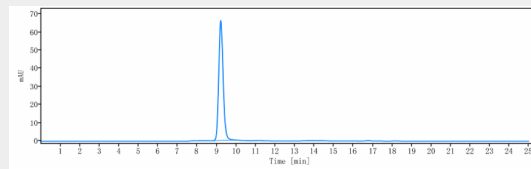
Provided below are standard protocols that you may find useful for product applications.

- [Western Blot](#)
- [Blocking Peptides](#)
- [Dot Blot](#)
- [Immunohistochemistry](#)
- [Immunofluorescence](#)
- [Immunoprecipitation](#)
- [Flow Cytometry](#)
- [Cell Culture](#)

Anti-TEM7R / PLXDC2 Reference Antibody (Fox Chase patent anti-TEM7R) - Images



Anti-TEM7R / PLXDC2 Reference Antibody (Fox Chase patent anti-TEM7R) on SDS-PAGE under reducing (R) condition. The gel was stained with Coomassie Blue. The purity of the protein is greater than 90%



The purity of Anti-TEM7R / PLXDC2 Reference Antibody (Fox Chase patent anti-TEM7R) is more than 95%, determined by SEC-HPLC.