

**Anti-Shiga toxin (E.coli) Reference Antibody (pritoxaximab)
Recombinant Antibody
Catalog # APR11031****Specification**

Anti-Shiga toxin (E.coli) Reference Antibody (pritoxaximab) - Product Information

Application	FC, E, FTA
Primary Accession	NA
Reactivity	Human, Mouse
Clonality	Monoclonal
Isotype	IgG1
Calculated MW	145.88 KDa

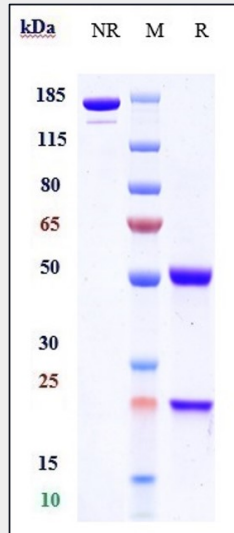
Anti-Shiga toxin (E.coli) Reference Antibody (pritoxaximab) - Additional Information**Target/Specificity**
Shiga toxin (E.coli)**Endotoxin**
< 0.001EU/ µg,determined by LAL method.**Conjugation**
Unconjugated**Expression system**
CHO Cell**Format**
Purified monoclonal antibody supplied in PBS, pH6.0, without preservative.This antibody is purified through a protein A column.**Storage**
-80°C for 2 years under sterile conditions □ -20°C for 1 year under sterile conditions □ Avoid repeated freeze-thaw cycles.**Anti-Shiga toxin (E.coli) Reference Antibody (pritoxaximab) - Protein Information****Anti-Shiga toxin (E.coli) Reference Antibody (pritoxaximab) - Protocols**

Provided below are standard protocols that you may find useful for product applications.

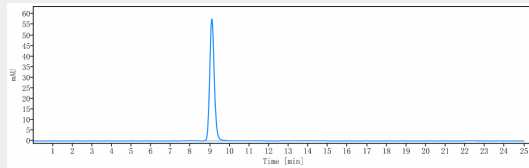
- [Western Blot](#)
- [Blocking Peptides](#)
- [Dot Blot](#)
- [Immunohistochemistry](#)
- [Immunofluorescence](#)

- [Immunoprecipitation](#)
- [Flow Cytometry](#)
- [Cell Culture](#)

Anti-Shiga toxin (E.coli) Reference Antibody (pritoxaximab) - Images



Anti-Shiga toxin (E.coli) Reference Antibody (pritoxaximab) on SDS-PAGE under reducing (R) condition. The gel was stained with Coomassie Blue. The purity of the protein is greater than 95%



The purity of Anti-Shiga toxin (E.coli) Reference Antibody (pritoxaximab) is more than 100.00 % ,determined by SEC-HPLC.