

**Anti-RSPO1 Reference Antibody (Oncomed patent anti-RSPO1)
Recombinant Antibody
Catalog # APR11024****Specification****Anti-RSPO1 Reference Antibody (Oncomed patent anti-RSPO1) - Product Information**

Application	FC, E, FTA
Primary Accession	Q2MKA7
Reactivity	Human, Mouse
Clonality	Monoclonal
Isotype	IgG1
Calculated MW	150 KDa

Anti-RSPO1 Reference Antibody (Oncomed patent anti-RSPO1) - Additional Information**Target/Specificity**
RSPO1**Endotoxin**

< 0.001EU/ µg, determined by LAL method.

Conjugation

Unconjugated

Expression system

CHO Cell

Format

Purified monoclonal antibody supplied in PBS, pH6.0, without preservative. This antibody is purified through a protein A column.

Anti-RSPO1 Reference Antibody (Oncomed patent anti-RSPO1) - Protein Information**Name** RSPO1**Function**

Activator of the canonical Wnt signaling pathway by acting as a ligand for LGR4-6 receptors (PubMed: [29769720](http://www.uniprot.org/citations/29769720)). Upon binding to LGR4-6 (LGR4, LGR5 or LGR6), LGR4-6 associate with phosphorylated LRP6 and frizzled receptors that are activated by extracellular Wnt receptors, triggering the canonical Wnt signaling pathway to increase expression of target genes. Also regulates the canonical Wnt/beta-catenin- dependent pathway and non-canonical Wnt signaling by acting as an inhibitor of ZNRF3, an important regulator of the Wnt signaling pathway. Acts as a ligand for frizzled FZD8 and LRP6. May negatively regulate the TGF-beta pathway. Has an essential role in ovary determination. Regulates Wnt signaling by antagonizing DKK1/KREM1- mediated internalization of LRP6 through an interaction with KREM1 (PubMed: [17804805](http://www.uniprot.org/citations/17804805)).

Cellular Location

Secreted. Nucleus {ECO:0000250|UniProtKB:Q9Z132} Note=Seems to mainly localize to nucleoli {ECO:0000250|UniProtKB:Q9Z132}

Tissue Location

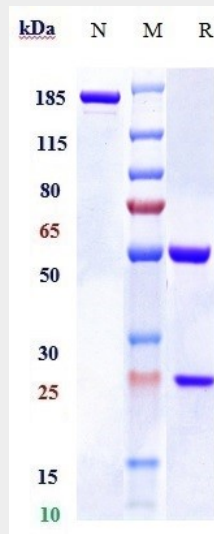
Abundantly expressed in adrenal glands, ovary, testis, thyroid and trachea but not in bone marrow, spinal cord, stomach, leukocytes colon, small intestine, prostate, thymus and spleen.

Anti-RSPO1 Reference Antibody (Oncomed patent anti-RSPO1) - Protocols

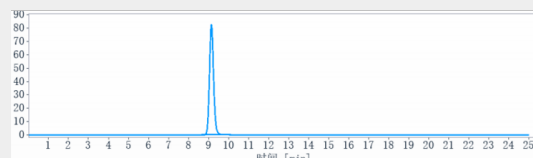
Provided below are standard protocols that you may find useful for product applications.

- [Western Blot](#)
- [Blocking Peptides](#)
- [Dot Blot](#)
- [Immunohistochemistry](#)
- [Immunofluorescence](#)
- [Immunoprecipitation](#)
- [Flow Cytometry](#)
- [Cell Culture](#)

Anti-RSPO1 Reference Antibody (Oncomed patent anti-RSPO1) - Images



Anti-RSPO1 Reference Antibody (Oncomed patent anti-RSPO1) on SDS-PAGE under reducing (R) condition. The gel was stained with Coomassie Blue. The purity of the protein is greater than 90%



The purity of Anti-RSPO1 Reference Antibody (Oncomed patent anti-RSPO1) is more than 95%, determined by SEC-HPLC.