

**Anti-RAMP3 Reference Antibody (Medella patent anti-RAMP-3)
Recombinant Antibody
Catalog # APR11021**

Specification

Anti-RAMP3 Reference Antibody (Medella patent anti-RAMP-3) - Product Information

Application	FC, E, FTA
Primary Accession	O60896
Reactivity	Human
Clonality	Monoclonal
Isotype	IgG1
Calculated MW	150 KDa

Anti-RAMP3 Reference Antibody (Medella patent anti-RAMP-3) - Additional Information

Target/Specificity
RAMP3

Endotoxin
< 0.001EU/ µg,determined by LAL method.

Conjugation
Unconjugated

Expression system
CHO Cell

Format
Purified monoclonal antibody supplied in PBS, pH6.0, without preservative.This antibody is purified through a protein A column.

Anti-RAMP3 Reference Antibody (Medella patent anti-RAMP-3) - Protein Information

Name RAMP3 ([HGNC:9845](#))

Function
Accessory protein that interacts with and modulates the function of G-protein coupled receptors including calcitonin gene-related peptide type 1 receptor (CALCRL), calcitonin receptor (CALCR) and G-protein coupled estrogen receptor 1 (GPER1) (PubMed:23674134, PubMed:9620797). Required for the transport of CALCRL and GPER1 receptors to the plasma membrane (PubMed:23674134, PubMed:9620797). Plays a role in cardioprotection by reducing cardiac hypertrophy and perivascular fibrosis in a GPER1-dependent manner (PubMed:23674134). Together with CALCRL, form a receptor complex for adrenomedullin/ADM and intermedin/ADM2 (PubMed:23674134).

href="http://www.uniprot.org/citations/32296767" target="_blank">32296767). Together with CALCR, act as a receptor complex for amylin/IAPP (PubMed:35324283).

Cellular Location

Cell membrane; Single-pass type I membrane protein. Membrane; Single-pass type I membrane protein. Note=Moves from intracellular puncta to the plasma membrane in a RAMP3-dependent manner

Tissue Location

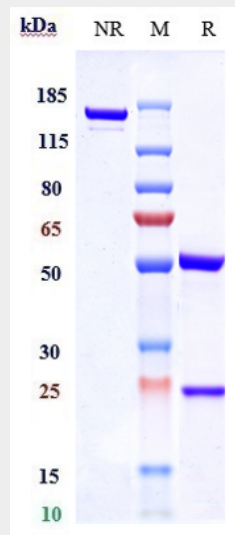
Strongly expressed in lung, breast, immune system and fetal tissues.

Anti-RAMP3 Reference Antibody (Medella patent anti-RAMP-3) - Protocols

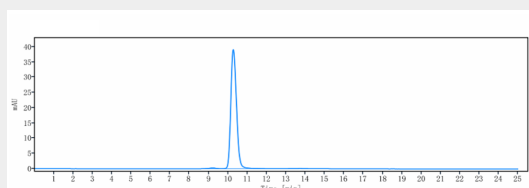
Provided below are standard protocols that you may find useful for product applications.

- [Western Blot](#)
- [Blocking Peptides](#)
- [Dot Blot](#)
- [Immunohistochemistry](#)
- [Immunofluorescence](#)
- [Immunoprecipitation](#)
- [Flow Cytometry](#)
- [Cell Culture](#)

Anti-RAMP3 Reference Antibody (Medella patent anti-RAMP-3) - Images



Anti-RAMP3 Reference Antibody (Medella patent anti-RAMP-3) on SDS-PAGE under reducing (R) condition. The gel was stained with Coomassie Blue. The purity of the protein is greater than 90%



The purity of Anti-RAMP3 Reference Antibody (Medella patent anti-RAMP-3) is more than 95%

,determined by SEC-HPLC.