

**Anti-PTGFRN / CD315 Reference Antibody (AG02-ADC)**  
**Recombinant Antibody**  
**Catalog # APR11019****Specification**

---

**Anti-PTGFRN / CD315 Reference Antibody (AG02-ADC) - Product Information**

Application	FC, E, FTA
Primary Accession	<a href="#">Q9P2B2</a>
Reactivity	Human
Clonality	Monoclonal
Isotype	IgG
Calculated MW	150 KDa

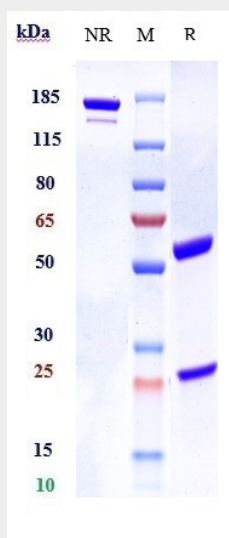
**Anti-PTGFRN / CD315 Reference Antibody (AG02-ADC) - Additional Information****Target/Specificity**  
PTGFRN / CD315**Endotoxin**  
< 0.001EU/ µg,determined by LAL method.**Conjugation**  
Unconjugated**Expression system**  
CHO Cell**Format**  
Purified monoclonal antibody supplied in PBS, pH6.0, without preservative.This antibody is purified through a protein A column.**Anti-PTGFRN / CD315 Reference Antibody (AG02-ADC) - Protein Information****Name** PTGFRN**Synonyms** CD9P1, EWIF, FPRP, KIAA1436**Function**  
Inhibits the binding of prostaglandin F2-alpha (PGF2-alpha) to its specific FP receptor, by decreasing the receptor number rather than the affinity constant. Functional coupling with the prostaglandin F2-alpha receptor seems to occur (By similarity). In myoblasts, associates with tetraspanins CD9 and CD81 to prevent myotube fusion during muscle regeneration (By similarity).**Cellular Location**  
Endoplasmic reticulum membrane; Single-pass type I membrane protein. Golgi apparatus, trans-Golgi network membrane; Single-pass type I membrane protein

## Anti-PTGFRN / CD315 Reference Antibody (AG02-ADC) - Protocols

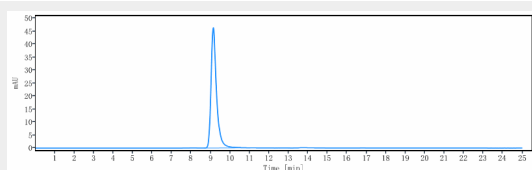
Provided below are standard protocols that you may find useful for product applications.

- [Western Blot](#)
- [Blocking Peptides](#)
- [Dot Blot](#)
- [Immunohistochemistry](#)
- [Immunofluorescence](#)
- [Immunoprecipitation](#)
- [Flow Cytometry](#)
- [Cell Culture](#)

## Anti-PTGFRN / CD315 Reference Antibody (AG02-ADC) - Images



Anti-PTGFRN / CD315 Reference Antibody (AG02-ADC) on SDS-PAGE under reducing (R) condition. The gel was stained with Coomassie Blue. The purity of the protein is greater than 90%



The purity of Anti-PTGFRN / CD315 Reference Antibody (AG02-ADC) is more than 95% ,determined by SEC-HPLC.