

**Anti-PLA2G1B Reference Antibody (Diaccurate patent anti-sPLA2-GIB)  
Recombinant Antibody  
Catalog # APR11012****Specification**

---

**Anti-PLA2G1B Reference Antibody (Diaccurate patent anti-sPLA2-GIB) - Product Information**

Application	FC, E, FTA
Primary Accession	<a href="#">P04054</a>
Reactivity	Human, Mouse
Clonality	Monoclonal
Isotype	IgG1
Calculated MW	150 KDa

**Anti-PLA2G1B Reference Antibody (Diaccurate patent anti-sPLA2-GIB) - Additional Information****Target/Specificity**  
PLA2G1B**Endotoxin**  
< 0.001EU/ µg,determined by LAL method.**Conjugation**  
Unconjugated**Expression system**  
CHO Cell**Format**  
Purified monoclonal antibody supplied in PBS, pH6.0, without preservative.This antibody is purified through a protein A column.**Anti-PLA2G1B Reference Antibody (Diaccurate patent anti-sPLA2-GIB) - Protein Information****Name** PLA2G1B**Synonyms** PLA2, PLA2A, PPLA2**Function**  
Secretory calcium-dependent phospholipase A2 that primarily targets dietary phospholipids in the intestinal tract (PubMed:<a href="http://www.uniprot.org/citations/10681567" target="\_blank">10681567</a>, PubMed:<a href="http://www.uniprot.org/citations/1420353" target="\_blank">1420353</a>, PubMed:<a href="http://www.uniprot.org/citations/17603006" target="\_blank">17603006</a>). Hydrolyzes the ester bond of the fatty acyl group attached at sn-2 position of phospholipids (phospholipase A2 activity) with preference for phosphatidylethanolamines and phosphatidylglycerols over phosphatidylcholines (PubMed:<a

href="http://www.uniprot.org/citations/10681567" target="\_blank">10681567</a>, PubMed:<a href="http://www.uniprot.org/citations/1420353" target="\_blank">1420353</a>, PubMed:<a href="http://www.uniprot.org/citations/17603006" target="\_blank">17603006</a>). May play a role in the biosynthesis of N-acyl ethanolamines that regulate energy metabolism and inflammation in the intestinal tract. Hydrolyzes N-acyl phosphatidylethanolamines to N-acyl lysophosphatidylethanolamines, which are further cleaved by a lysophospholipase D to release N-acyl ethanolamines (By similarity). May act in an autocrine and paracrine manner (PubMed:<a href="http://www.uniprot.org/citations/25335547" target="\_blank">25335547</a>, PubMed:<a href="http://www.uniprot.org/citations/7721806" target="\_blank">7721806</a>). Upon binding to the PLA2R1 receptor can regulate podocyte survival and glomerular homeostasis (PubMed:<a href="http://www.uniprot.org/citations/25335547" target="\_blank">25335547</a>). Has anti-helminth activity in a process regulated by gut microbiota. Upon helminth infection of intestinal epithelia, directly affects phosphatidylethanolamine contents in the membrane of helminth larvae, likely controlling an array of phospholipid-mediated cellular processes such as membrane fusion and cell division while providing for better immune recognition, ultimately reducing larvae integrity and infectivity (By similarity).

#### **Cellular Location**

Secreted. Note=Secreted from pancreatic acinar cells in its inactive form

#### **Tissue Location**

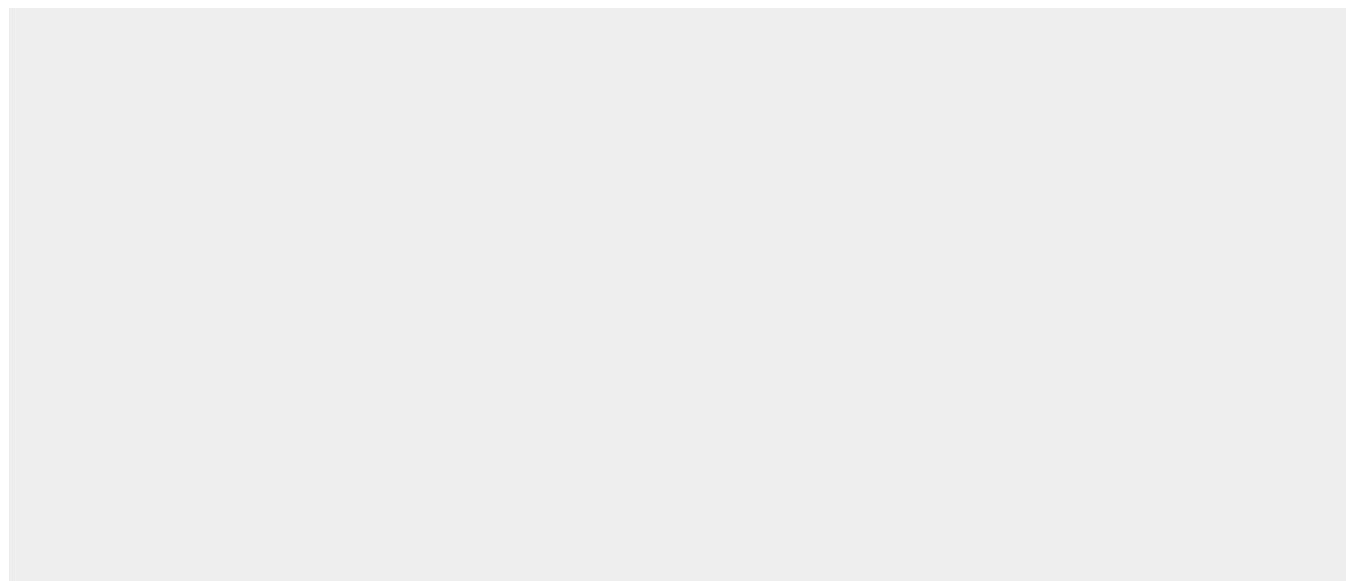
Selectively expressed in pancreas, lung, liver and kidney. Also detected at lower levels in ovary and testis

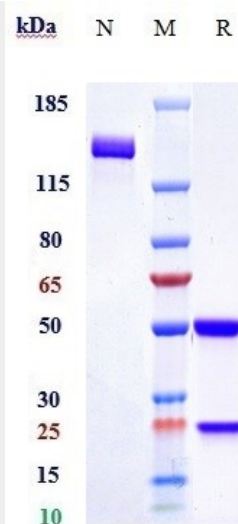
#### **Anti-PLA2G1B Reference Antibody (Diaccurate patent anti-sPLA2-GIB) - Protocols**

Provided below are standard protocols that you may find useful for product applications.

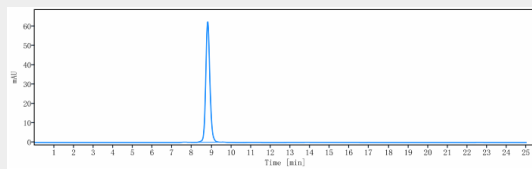
- [Western Blot](#)
- [Blocking Peptides](#)
- [Dot Blot](#)
- [Immunohistochemistry](#)
- [Immunofluorescence](#)
- [Immunoprecipitation](#)
- [Flow Cytometry](#)
- [Cell Culture](#)

#### **Anti-PLA2G1B Reference Antibody (Diaccurate patent anti-sPLA2-GIB) - Images**





Anti-PLA2G1B Reference Antibody (Diaccurate patent anti-sPLA2-GIB) on SDS-PAGE under reducing (R) condition. The gel was stained with Coomassie Blue. The purity of the protein is greater than 90%



The purity of Anti-PLA2G1B Reference Antibody (Diaccurate patent anti-sPLA2-GIB) is more than 95% ,determined by SEC-HPLC.