

**Anti-PGLYRP1 / PGRP-S Reference Antibody (Novo Nordisk patent anti-PGLYRP1)
Recombinant Antibody
Catalog # APR11011****Specification**

**Anti-PGLYRP1 / PGRP-S Reference Antibody (Novo Nordisk patent anti-PGLYRP1) -
Product Information**

Application	FC, E, FTA
Primary Accession	O75594
Reactivity	Human
Clonality	Monoclonal
Isotype	IgG4SP
Calculated MW	150 KDa

**Anti-PGLYRP1 / PGRP-S Reference Antibody (Novo Nordisk patent anti-PGLYRP1) -
Additional Information****Target/Specificity**
PGLYRP1 / PGRP-S**Endotoxin**
< 0.001EU/ µg,determined by LAL method.**Conjugation**
Unconjugated**Expression system**
CHO Cell**Format**
Purified monoclonal antibody supplied in PBS, pH6.0, without preservative.This antibody is purified through a protein A column.**Anti-PGLYRP1 / PGRP-S Reference Antibody (Novo Nordisk patent anti-PGLYRP1) -
Protein Information****Name** PGLYRP1**Synonyms** PGLYRP, PGRP, TNFSF3L**Function**
Innate immunity protein that plays several important functions in antimicrobial and antitumor defense systems. Acts as a pattern receptor that binds to murein peptidoglycans (PGN) of Gram-positive bacteria and thus provides bactericidal activity (PubMed:9707603). Forms an equimolar complex with heat shock protein HSPA1A and induces programmed cell death through apoptosis and necroptosis in tumor cell lines by activating the TNFR1 receptor on the target cell membrane (PubMed:

target="_blank">21247889, PubMed:26183779). In addition, acts in complex with the Ca(2+)-binding protein S100A4 as a chemoattractant able to induce lymphocyte movement (PubMed:26654597). Mechanistically, this complex acts as a ligand of the chemotactic receptors CCR5 and CXCR3 which are present on the cells of the immune system (PubMed:30713770). Promotes also the activation of lymphocytes that become able to kill virus-infected cells as well as tumor cells by modulating the spectrum of their target-cell specificity (PubMed:28977785, PubMed:29083508). Induction of cytotoxicity on monocyte surface requires interaction with TREM1 receptor (PubMed:25595774, PubMed:28977785).

Cellular Location

Secreted. Cytoplasmic granule

Tissue Location

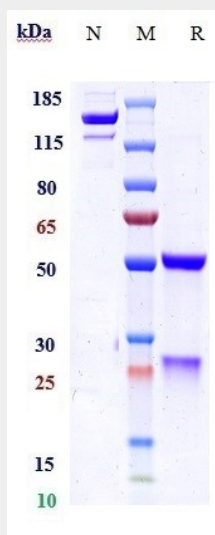
Highly expressed in bone marrow. Weak expression found in kidney, liver, small intestine, spleen, thymus, peripheral leukocyte, lung, fetal spleen and neutrophils

Anti-PGLYRP1 / PGRP-S Reference Antibody (Novo Nordisk patent anti-PGLYRP1) - Protocols

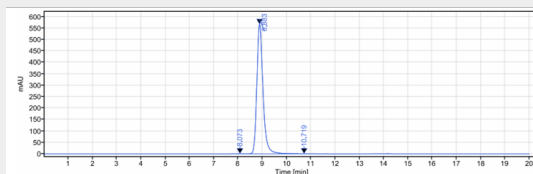
Provided below are standard protocols that you may find useful for product applications.

- [Western Blot](#)
- [Blocking Peptides](#)
- [Dot Blot](#)
- [Immunohistochemistry](#)
- [Immunofluorescence](#)
- [Immunoprecipitation](#)
- [Flow Cytometry](#)
- [Cell Culture](#)

Anti-PGLYRP1 / PGRP-S Reference Antibody (Novo Nordisk patent anti-PGLYRP1) - Images



Anti-PGLYRP1 / PGRP-S Reference Antibody (Novo Nordisk patent anti-PGLYRP1) on SDS-PAGE under reducing (R) condition. The gel was stained with Coomassie Blue. The purity of the protein is greater than 90%



The purity of Anti-PGLYRP1 / PGRP-S Reference Antibody (Novo Nordisk patent anti-PGLYRP1) is more than 95% ,determined by SEC-HPLC.