

**Anti-PCLA Reference Antibody (U.Penn. patent anti-PCLA)  
Recombinant Antibody  
Catalog # APR11002**

**Specification**

---

**Anti-PCLA Reference Antibody (U.Penn. patent anti-PCLA) - Product Information**

Application	FC, E, FTA
Primary Accession	<a href="#">NA</a>
Reactivity	Human
Clonality	Monoclonal
Isotype	IgG1
Calculated MW	150 KDa

**Anti-PCLA Reference Antibody (U.Penn. patent anti-PCLA) - Additional Information**

**Target/Specificity**  
PCLA

**Endotoxin**  
< 0.001EU/ µg,determined by LAL method.

**Conjugation**  
Unconjugated

**Expression system**  
CHO Cell

**Format**  
Purified monoclonal antibody supplied in PBS, pH6.0, without preservative.This antibody is purified through a protein A column.

**Storage**  
-80°C for 2 years under sterile conditions □ -20°C for 1 year under sterile conditions □ Avoid repeated freeze-thaw cycles.

**Anti-PCLA Reference Antibody (U.Penn. patent anti-PCLA) - Protein Information**

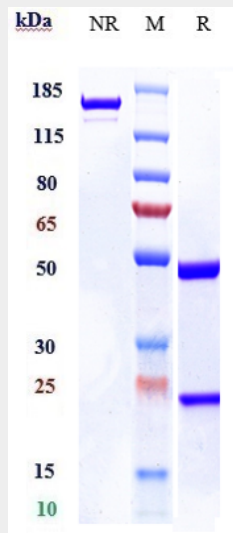
**Anti-PCLA Reference Antibody (U.Penn. patent anti-PCLA) - Protocols**

Provided below are standard protocols that you may find useful for product applications.

- [Western Blot](#)
- [Blocking Peptides](#)
- [Dot Blot](#)
- [Immunohistochemistry](#)
- [Immunofluorescence](#)

- [Immunoprecipitation](#)
- [Flow Cytometry](#)
- [Cell Culture](#)

### Anti-PCLA Reference Antibody (U.Penn. patent anti-PCLA) - Images



Anti-PCLA Reference Antibody (U.Penn. patent anti-PCLA) on SDS-PAGE under reducing (R) condition. The gel was stained with Coomassie Blue. The purity of the protein is greater than 90%