

**Anti-oxLDL Reference Antibody (Okayama U. patent anti-oxLDL)  
Recombinant Antibody  
Catalog # APR10997****Specification**

---

**Anti-oxLDL Reference Antibody (Okayama U. patent anti-oxLDL) - Product Information**

Application	FC, E, FTA
Primary Accession	<a href="#">NA</a>
Reactivity	Human
Clonality	Monoclonal
Isotype	IgG1
Calculated MW	150 KDa

**Anti-oxLDL Reference Antibody (Okayama U. patent anti-oxLDL) - Additional Information****Target/Specificity**  
oxLDL**Endotoxin**

< 0.001EU/ µg,determined by LAL method.

**Conjugation**

Unconjugated

**Expression system**

CHO Cell

**Format**

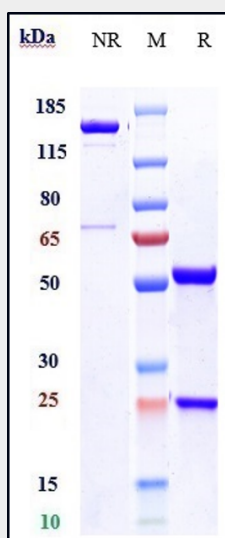
Purified monoclonal antibody supplied in PBS, pH6.0, without preservative.This antibody is purified through a protein A column.

**Anti-oxLDL Reference Antibody (Okayama U. patent anti-oxLDL) - Protein Information****Anti-oxLDL Reference Antibody (Okayama U. patent anti-oxLDL) - Protocols**

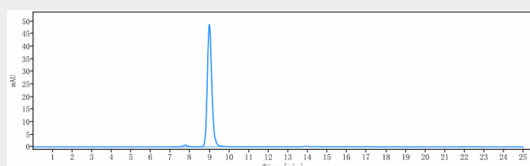
Provided below are standard protocols that you may find useful for product applications.

- [Western Blot](#)
- [Blocking Peptides](#)
- [Dot Blot](#)
- [Immunohistochemistry](#)
- [Immunofluorescence](#)
- [Immunoprecipitation](#)
- [Flow Cytometry](#)
- [Cell Culture](#)

**Anti-oxLDL Reference Antibody (Okayama U. patent anti-oxLDL) - Images**



Anti-oxLDL Reference Antibody (Okayama U. patent anti-oxLDL) on SDS-PAGE under reducing (R) condition. The gel was stained with Coomassie Blue. The purity of the protein is greater than 90%



The purity of Anti-oxLDL Reference Antibody (Okayama U. patent anti-oxLDL) is more than 95%, determined by SEC-HPLC.