

**Anti-NOTCH3 Reference Antibody (Genentech patent anti-Notch3)
Recombinant Antibody
Catalog # APR10995****Specification**

Anti-NOTCH3 Reference Antibody (Genentech patent anti-Notch3) - Product Information

Application	FC, E, FTA
Primary Accession	O9UM47
Reactivity	Human, Mouse
Clonality	Monoclonal
Isotype	IgG1
Calculated MW	150 KDa

Anti-NOTCH3 Reference Antibody (Genentech patent anti-Notch3) - Additional Information**Target/Specificity**
NOTCH3**Endotoxin**
< 0.001EU/ µg,determined by LAL method.**Conjugation**
Unconjugated**Expression system**
CHO Cell**Format**
Purified monoclonal antibody supplied in PBS, pH6.0, without preservative.This antibody is purified through a protein A column.**Storage**
-80°C for 2 years under sterile conditions □ -20°C for 1 year under sterile conditions □ Avoid repeated freeze-thaw cycles.**Anti-NOTCH3 Reference Antibody (Genentech patent anti-Notch3) - Protein Information****Name** NOTCH3**Function**
Functions as a receptor for membrane-bound ligands Jagged1, Jagged2 and Delta1 to regulate cell-fate determination (PubMed:15350543). Upon ligand activation through the released notch intracellular domain (NICD) it forms a transcriptional activator complex with RBPJ/RBPSUH and activates genes of the enhancer of split locus. Affects the implementation of differentiation, proliferation and apoptotic programs (By similarity).

Cellular Location

Cell membrane; Single-pass type I membrane protein

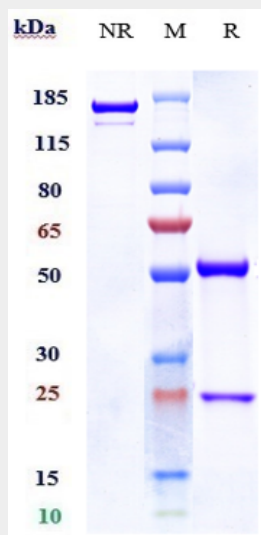
Tissue Location

Ubiquitously expressed in fetal and adult tissues.

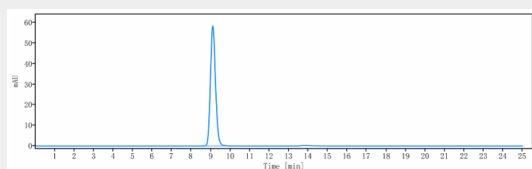
Anti-NOTCH3 Reference Antibody (Genentech patent anti-Notch3) - Protocols

Provided below are standard protocols that you may find useful for product applications.

- [Western Blot](#)
- [Blocking Peptides](#)
- [Dot Blot](#)
- [Immunohistochemistry](#)
- [Immunofluorescence](#)
- [Immunoprecipitation](#)

Anti-NOTCH3 Reference Antibody (Genentech patent anti-Notch3) - Images

Anti-NOTCH3 Reference Antibody (Genentech patent anti-Notch3) on SDS-PAGE under reducing (R) condition. The gel was stained with Coomassie Blue. The purity of the protein is greater than 90%



The purity of Anti-NOTCH3 Reference Antibody (Genentech patent anti-Notch3) is more than 95%, determined by SEC-HPLC.