

Anti-MUC1 Reference Antibody (AR20.5)
Recombinant Antibody
Catalog # APR10984

Specification

Anti-MUC1 Reference Antibody (AR20.5) - Product Information

Application	FC, E, FTA
Primary Accession	P15941
Reactivity	Cynomolgus, Human
Clonality	Monoclonal
Isotype	IgG1
Calculated MW	150 KDa

Anti-MUC1 Reference Antibody (AR20.5) - Additional Information

Target/Specificity
MUC1

Endotoxin
< 0.001EU/ µg,determined by LAL method.

Conjugation
Unconjugated

Expression system
CHO Cell

Format
Purified monoclonal antibody supplied in PBS, pH6.0, without preservative.This antibody is purified through a protein A column.

Storage
-80°C for 2 years under sterile conditions □ -20°C for 1 year under sterile conditions □ Avoid repeated freeze-thaw cycles.

Anti-MUC1 Reference Antibody (AR20.5) - Protein Information

Name MUC1

Synonyms PUM

Function
The alpha subunit has cell adhesive properties. Can act both as an adhesion and an anti-adhesion protein. May provide a protective layer on epithelial cells against bacterial and enzyme attack.

Cellular Location
Apical cell membrane; Single-pass type I membrane protein. Note=Exclusively located in the apical domain of the plasma membrane of highly polarized epithelial cells After endocytosis,

internalized and recycled to the cell membrane Located to microvilli and to the tips of long filopodial protusions [Isoform Y]: Secreted. [Mucin-1 subunit beta]: Cell membrane. Cytoplasm. Nucleus. Note=On EGF and PDGFRB stimulation, transported to the nucleus through interaction with CTNNB1, a process which is stimulated by phosphorylation. On HRG stimulation, colocalizes with JUP/gamma-catenin at the nucleus

Tissue Location

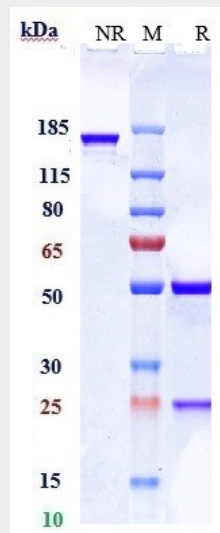
Expressed on the apical surface of epithelial cells, especially of airway passages, breast and uterus. Also expressed in activated and unactivated T-cells. Overexpressed in epithelial tumors, such as breast or ovarian cancer and also in non-epithelial tumor cells. Isoform Y is expressed in tumor cells only

Anti-MUC1 Reference Antibody (AR20.5) - Protocols

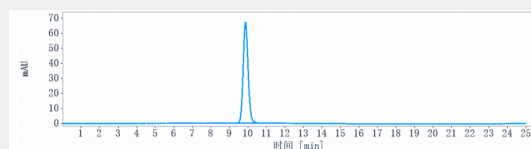
Provided below are standard protocols that you may find useful for product applications.

- [Western Blot](#)
- [Blocking Peptides](#)
- [Dot Blot](#)
- [Immunohistochemistry](#)
- [Immunofluorescence](#)
- [Immunoprecipitation](#)
- [Flow Cytometry](#)
- [Cell Culture](#)

Anti-MUC1 Reference Antibody (AR20.5) - Images



Anti-MUC1 Reference Antibody (AR20.5) on SDS-PAGE under reducing (R) condition. The gel was stained with Coomassie Blue. The purity of the protein is greater than 90%



The purity of Anti-MUC1 Reference Antibody (AR20.5) is more than 95% ,determined by SEC-HPLC.