

**Anti-MMP9 Reference Antibody (Yeda patent anti-MMP-9)
Recombinant Antibody
Catalog # APR10979**

Specification

Anti-MMP9 Reference Antibody (Yeda patent anti-MMP-9) - Product Information

Application	FC, E, FTA
Primary Accession	P14780
Reactivity	Human, Mouse
Clonality	Monoclonal
Isotype	IgG2SA
Calculated MW	144.76 KDa

Anti-MMP9 Reference Antibody (Yeda patent anti-MMP-9) - Additional Information

Target/Specificity
MMP9

Endotoxin
< 0.001EU/ µg,determined by LAL method.

Conjugation
Unconjugated

Expression system
CHO Cell

Format
Purified monoclonal antibody supplied in PBS, pH6.0, without preservative.This antibody is purified through a protein A column.

Anti-MMP9 Reference Antibody (Yeda patent anti-MMP-9) - Protein Information

Name MMP9

Synonyms CLG4B

Function
Matrix metalloproteinase that plays an essential role in local proteolysis of the extracellular matrix and in leukocyte migration (PubMed:[12879005](http://www.uniprot.org/citations/12879005), PubMed:[1480034](http://www.uniprot.org/citations/1480034), PubMed:[2551898](http://www.uniprot.org/citations/2551898)). Could play a role in bone osteoclastic resorption (By similarity). Cleaves KiSS1 at a Gly-I-Leu bond (PubMed:[12879005](http://www.uniprot.org/citations/12879005)). Cleaves NINJ1 to generate the Secreted ninjurin-1 form (PubMed:[32883094](http://www.uniprot.org/citations/32883094)). Cleaves type IV and type V collagen into large C-terminal three quarter fragments and shorter N-terminal one quarter fragments (PubMed:[1480034](http://www.uniprot.org/citations/1480034))

target="_blank">1480034). Degrades fibronectin but not laminin or Pz-peptide.

Cellular Location

Secreted, extracellular space, extracellular matrix

Tissue Location

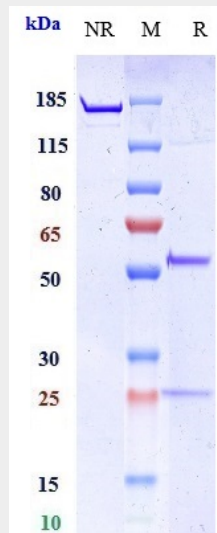
Detected in neutrophils (at protein level) (PubMed:7683678). Produced by normal alveolar macrophages and granulocytes.

Anti-MMP9 Reference Antibody (Yeda patent anti-MMP-9) - Protocols

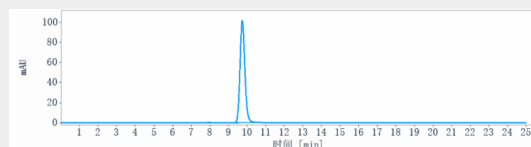
Provided below are standard protocols that you may find useful for product applications.

- [Western Blot](#)
- [Blocking Peptides](#)
- [Dot Blot](#)
- [Immunohistochemistry](#)
- [Immunofluorescence](#)
- [Immunoprecipitation](#)
- [Flow Cytometry](#)
- [Cell Culture](#)

Anti-MMP9 Reference Antibody (Yeda patent anti-MMP-9) - Images



Anti-MMP9 Reference Antibody (Yeda patent anti-MMP-9) on SDS-PAGE under reducing (R) condition. The gel was stained with Coomassie Blue. The purity of the protein is greater than 95%



The purity of Anti-MMP9 Reference Antibody (Yeda patent anti-MMP-9) is more than 95%, determined by SEC-HPLC.