

**Anti-Mesothelin Reference Antibody (NIH patent anti-Mesothelin)
Recombinant Antibody
Catalog # APR10977**

Specification

Anti-Mesothelin Reference Antibody (NIH patent anti-Mesothelin) - Product Information

Application	FC, E, FTA
Primary Accession	O13421
Reactivity	Human, Mouse
Clonality	Monoclonal
Isotype	IgG1
Calculated MW	150 KDa

Anti-Mesothelin Reference Antibody (NIH patent anti-Mesothelin) - Additional Information

Target/Specificity

Mesothelin

Endotoxin

< 0.001EU/ µg,determined by LAL method.

Conjugation

Unconjugated

Expression system

CHO Cell

Format

Purified monoclonal antibody supplied in PBS, pH6.0, without preservative.This antibody is purified through a protein A column.

Storage

-80°C for 2 years under sterile conditions □ -20°C for 1 year under sterile conditions □ Avoid repeated freeze-thaw cycles.

Anti-Mesothelin Reference Antibody (NIH patent anti-Mesothelin) - Protein Information

Name MSLN

Synonyms MPF

Function

Membrane-anchored forms may play a role in cellular adhesion.

Cellular Location

Cell membrane; Lipid-anchor, GPI-anchor. Golgi apparatus [Isoform 3]: Secreted.

Tissue Location

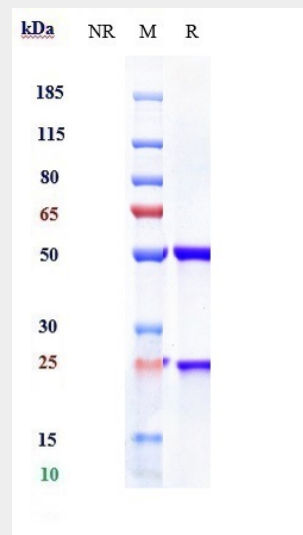
Expressed in lung. Expressed at low levels in heart, placenta and kidney. Expressed in mesothelial cells. Highly expressed in mesotheliomas, ovarian cancers, and some squamous cell carcinomas (at protein level).

Anti-Mesothelin Reference Antibody (NIH patent anti-Mesothelin) - Protocols

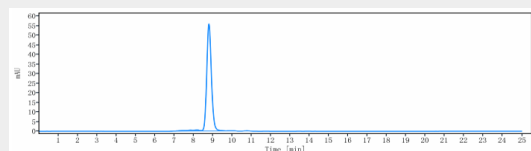
Provided below are standard protocols that you may find useful for product applications.

- [Western Blot](#)
- [Blocking Peptides](#)
- [Dot Blot](#)
- [Immunohistochemistry](#)
- [Immunofluorescence](#)
- [Immunoprecipitation](#)
- [Flow Cytometry](#)
- [Cell Culture](#)

Anti-Mesothelin Reference Antibody (NIH patent anti-Mesothelin) - Images



Anti-Mesothelin Reference Antibody (NIH patent anti-Mesothelin) on SDS-PAGE under reducing (R) condition. The gel was stained with Coomassie Blue. The purity of the protein is greater than 90%



The purity of Anti-Mesothelin Reference Antibody (NIH patent anti-Mesothelin) is more than 95%, determined by SEC-HPLC.