

**Anti-Matriptase Reference Antibody (Oxford Bio patent anti-Matriptase)
Recombinant Antibody
Catalog # APR10975**

Specification

Anti-Matriptase Reference Antibody (Oxford Bio patent anti-Matriptase) - Product Information

Application	FC, E, FTA
Primary Accession	Q9Y5Y6
Reactivity	Human, Mouse
Clonality	Monoclonal
Isotype	IgG1
Calculated MW	150 KDa

Anti-Matriptase Reference Antibody (Oxford Bio patent anti-Matriptase) - Additional Information

Target/Specificity

Matriptase

Endotoxin

< 0.001EU/ µg,determined by LAL method.

Conjugation

Unconjugated

Expression system

CHO Cell

Format

Purified monoclonal antibody supplied in PBS, pH6.0, without preservative.This antibody is purified through a protein A column.

Storage

-80°C for 2 years under sterile conditions □ -20°C for 1 year under sterile conditions □ Avoid repeated freeze-thaw cycles.

Anti-Matriptase Reference Antibody (Oxford Bio patent anti-Matriptase) - Protein Information

Name ST14

Synonyms PRSS14, SNC19, TADG15

Function

Exhibits trypsin-like activity as defined by cleavage of synthetic substrates with Arg or Lys as the P1 site (PubMed:10373424). Involved in the terminal differentiation of keratinocytes through

prostasin (PRSS8) activation and filaggrin (FLG) processing (PubMed:18843291). Proteolytically cleaves and therefore activates Tmprss13 (PubMed:28710277).

Cellular Location

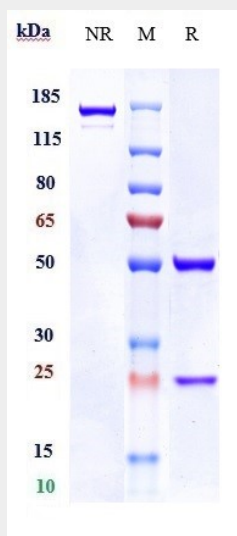
Membrane; Single-pass type II membrane protein

Anti-Matriptase Reference Antibody (Oxford Bio patent anti-Matriptase) - Protocols

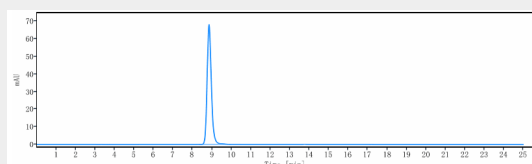
Provided below are standard protocols that you may find useful for product applications.

- [Western Blot](#)
- [Blocking Peptides](#)
- [Dot Blot](#)
- [Immunohistochemistry](#)
- [Immunofluorescence](#)
- [Immunoprecipitation](#)
- [Flow Cytometry](#)
- [Cell Culture](#)

Anti-Matriptase Reference Antibody (Oxford Bio patent anti-Matriptase) - Images



Anti-Matriptase Reference Antibody (Oxford Bio patent anti-Matriptase) on SDS-PAGE under reducing (R) condition. The gel was stained with Coomassie Blue. The purity of the protein is greater than 95%



The purity of Anti-Matriptase Reference Antibody (Oxford Bio patent anti-Matriptase) is more than 95%, determined by SEC-HPLC.