

**Anti-Integrin  $\alpha$ 11 / ITAG11 Reference Antibody (Scripps patent anti-CD11a)  
Recombinant Antibody  
Catalog # APR10962**

**Specification**

---

**Anti-Integrin  $\alpha$ 11 / ITAG11 Reference Antibody (Scripps patent anti-CD11a) - Product Information**

Application	FC, E, FTA
Primary Accession	<a href="#">O9UKX5</a>
Reactivity	Human, Mouse
Clonality	Monoclonal
Isotype	IgG2SA
Calculated MW	145 KDa

**Anti-Integrin  $\alpha$ 11 / ITAG11 Reference Antibody (Scripps patent anti-CD11a) - Additional Information**

**Target/Specificity**  
Integrin  $\alpha$ 11 / ITAG11

**Endotoxin**  
< 0.001EU/  $\mu$ g,determined by LAL method.

**Conjugation**  
Unconjugated

**Expression system**  
CHO Cell

**Format**  
Purified monoclonal antibody supplied in PBS, pH6.0, without preservative.This antibody is purified through a protein A column.

**Anti-Integrin  $\alpha$ 11 / ITAG11 Reference Antibody (Scripps patent anti-CD11a) - Protein Information**

**Name** ITGA11

**Function**  
Integrin  $\alpha$ -11/ $\beta$ -1 is a receptor for collagen.

**Cellular Location**  
Membrane; Single-pass type I membrane protein.

**Tissue Location**  
According to PubMed:10464311, highest levels of expression in uterus and heart, intermediate levels in skeletal muscle and intermediate to low levels in pancreas, kidney and placenta  
According to PubMed:10486209, also found in brain, colon, lung, small intestine, stomach, testis,

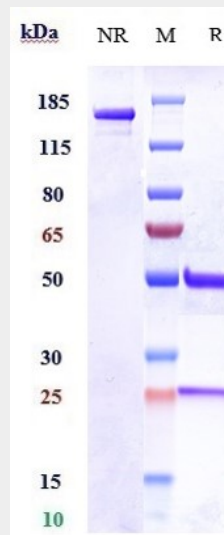
salivary glands, thyroid glands and prostate. Very low levels in peripheral blood lymphocytes, fetal brain and fetal liver.

### Anti-Integrin $\alpha 11$ / ITAG11 Reference Antibody (Scripps patent anti-CD11a) - Protocols

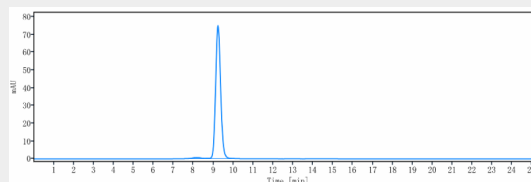
Provided below are standard protocols that you may find useful for product applications.

- [Western Blot](#)
- [Blocking Peptides](#)
- [Dot Blot](#)
- [Immunohistochemistry](#)
- [Immunofluorescence](#)
- [Immunoprecipitation](#)
- [Flow Cytometry](#)
- [Cell Culture](#)

### Anti-Integrin $\alpha 11$ / ITAG11 Reference Antibody (Scripps patent anti-CD11a) - Images



Anti-Integrin  $\alpha 11$  / ITAG11 Reference Antibody (Scripps patent anti-CD11a) on SDS-PAGE under reducing (R) condition. The gel was stained with Coomassie Blue. The purity of the protein is greater than 95%



The purity of Anti-Integrin  $\alpha 11$  / ITAG11 Reference Antibody (Scripps patent anti-CD11a) is more than 95% ,determined by SEC-HPLC.