

**Anti-IL-21 Reference Antibody (Lilly patent anti-IL-21)  
Recombinant Antibody  
Catalog # APR10954**

**Specification**

---

**Anti-IL-21 Reference Antibody (Lilly patent anti-IL-21) - Product Information**

Application	FC, E, FTA
Primary Accession	<a href="#">O9HBE4</a>
Reactivity	Rat, Cynomolgus, Human, Mouse, Rabbit
Clonality	Monoclonal
Isotype	IgG1
Calculated MW	145.32 KDa

**Anti-IL-21 Reference Antibody (Lilly patent anti-IL-21) - Additional Information**

**Target/Specificity**  
IL-21

**Endotoxin**  
< 0.001EU/ µg,determined by LAL method.

**Conjugation**  
Unconjugated

**Expression system**  
CHO Cell

**Format**  
Purified monoclonal antibody supplied in PBS, pH6.0, without preservative.This antibody is purified through a protein A column.

**Storage**  
-80°C for 2 years under sterile conditions □ -20°C for 1 year under sterile conditions □ Avoid repeated freeze-thaw cycles.

**Anti-IL-21 Reference Antibody (Lilly patent anti-IL-21) - Protein Information**

**Name** IL21 ([HGNC:6005](#))

**Function**  
Cytokine with immunoregulatory activity. May promote the transition between innate and adaptive immunity. Induces the production of IgG(1) and IgG(3) in B-cells (By similarity). Implicated in the generation and maintenance of T follicular helper (Tfh) cells and the formation of germinal-centers. Together with IL6, control the early generation of Tfh cells and are critical for an effective antibody response to acute viral infection (By similarity). May play a role in proliferation and maturation of natural killer (NK) cells in synergy with IL15. May regulate proliferation of mature B- and T-cells in response to activating stimuli. In synergy with IL15 and IL18 stimulates interferon gamma production in T-cells and NK cells (PubMed:<a

href="http://www.uniprot.org/citations/11081504" target="\_blank">11081504</a>, PubMed:<a href="http://www.uniprot.org/citations/15178704" target="\_blank">15178704</a>). During T-cell mediated immune response may inhibit dendritic cells (DC) activation and maturation (By similarity).

#### Cellular Location

Secreted.

#### Tissue Location

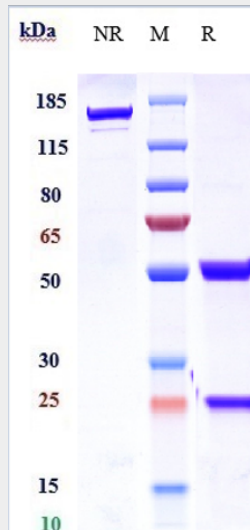
Expressed in activated CD4-positive T-cells but not in CD8-positive T-cells, B-cells, or monocytes

### Anti-IL-21 Reference Antibody (Lilly patent anti-IL-21) - Protocols

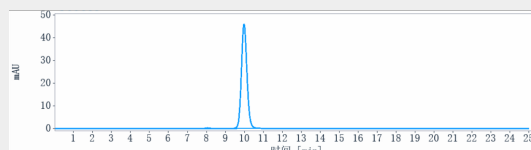
Provided below are standard protocols that you may find useful for product applications.

- [Western Blot](#)
- [Blocking Peptides](#)
- [Dot Blot](#)
- [Immunohistochemistry](#)
- [Immunofluorescence](#)
- [Immunoprecipitation](#)
- [Flow Cytometry](#)
- [Cell Culture](#)

### Anti-IL-21 Reference Antibody (Lilly patent anti-IL-21) - Images



Anti-IL-21 Reference Antibody (Lilly patent anti-IL-21) on SDS-PAGE under reducing (R) condition. The gel was stained with Coomassie Blue. The purity of the protein is greater than 95%



The purity of Anti-IL-21 Reference Antibody (Lilly patent anti-IL-21) is more than 99.35%, determined by SEC-HPLC.