

**Anti-IL-15 Reference Antibody (DISC0280)**  
**Recombinant Antibody**  
**Catalog # APR10951****Specification**

---

**Anti-IL-15 Reference Antibody (DISC0280) - Product Information**

Application	FC, E, FTA
Primary Accession	<a href="#">P40933</a>
Reactivity	Rat, Cynomolgus, Human
Clonality	Monoclonal
Isotype	IgG1
Calculated MW	145 KDa

**Anti-IL-15 Reference Antibody (DISC0280) - Additional Information****Target/Specificity**  
IL-15**Endotoxin**  
< 0.001EU/ µg,determined by LAL method.**Conjugation**  
Unconjugated**Expression system**  
CHO Cell**Format**  
Purified monoclonal antibody supplied in PBS, pH6.0, without preservative.This antibody is purified through a protein A column.**Storage**  
-80°C for 2 years under sterile conditions □ -20°C for 1 year under sterile conditions □ Avoid repeated freeze-thaw cycles.**Anti-IL-15 Reference Antibody (DISC0280) - Protein Information****Name** IL15**Function**  
Cytokine that plays a major role in the development of inflammatory and protective immune responses to microbial invaders and parasites by modulating immune cells of both the innate and adaptive immune systems (PubMed:<a href="http://www.uniprot.org/citations/15123770" target="\_blank">15123770</a>). Stimulates the proliferation of natural killer cells, T-cells and B-cells and promotes the secretion of several cytokines (PubMed:<a href="http://www.uniprot.org/citations/8178155" target="\_blank">8178155</a>, PubMed:<a href="http://www.uniprot.org/citations/9326248" target="\_blank">9326248</a>). In monocytes, induces the production of IL8 and monocyte chemotactic protein 1/CCL2, two chemokines that

attract neutrophils and monocytes respectively to sites of infection (PubMed:<a href="http://www.uniprot.org/citations/9326248" target="\_blank">9326248</a>). Unlike most cytokines, which are secreted in soluble form, IL15 is expressed in association with its high affinity IL15RA on the surface of IL15-producing cells and delivers signals to target cells that express IL2RB and IL2RG receptor subunits (PubMed:<a href="http://www.uniprot.org/citations/10233906" target="\_blank">10233906</a>, PubMed:<a href="http://www.uniprot.org/citations/23104097" target="\_blank">23104097</a>, PubMed:<a href="http://www.uniprot.org/citations/8026467" target="\_blank">8026467</a>). Binding to its receptor triggers the phosphorylation of JAK1 and JAK3 and the recruitment and subsequent phosphorylation of signal transducer and activator of transcription-3/STAT3 and STAT5 (PubMed:<a href="http://www.uniprot.org/citations/7568001" target="\_blank">7568001</a>). In mast cells, induces the rapid tyrosine phosphorylation of STAT6 and thereby controls mast cell survival and release of cytokines such as IL4 (By similarity).

#### Cellular Location

[Isoform IL15-S48AA]: Secreted.

#### Tissue Location

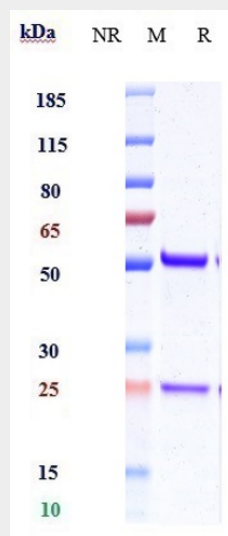
Most abundant in placenta and skeletal muscle. It is also detected in the heart, lung, liver and kidney. IL15-S21AA is preferentially expressed in tissues such as testis and thymus

### Anti-IL-15 Reference Antibody (DISC0280) - Protocols

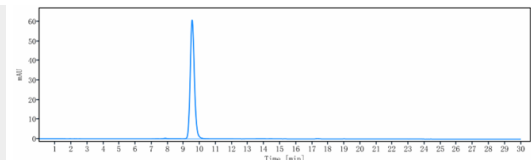
Provided below are standard protocols that you may find useful for product applications.

- [Western Blot](#)
- [Blocking Peptides](#)
- [Dot Blot](#)
- [Immunohistochemistry](#)
- [Immunofluorescence](#)
- [Immunoprecipitation](#)
- [Flow Cytometry](#)
- [Cell Culture](#)

### Anti-IL-15 Reference Antibody (DISC0280) - Images



Anti-IL-15 Reference Antibody (DISC0280) on SDS-PAGE under reducing (R) condition. The gel was stained with Coomassie Blue. The purity of the protein is greater than 90%



The purity of Anti-IL-15 Reference Antibody (DISC0280) is more than 95% ,determined by SEC-HPLC.