

**Anti-IL-13Ra2 / CD213a2 Reference Antibody (Wake Forest U. patent anti-IL-13RA2)  
Recombinant Antibody  
Catalog # APR10950**

**Specification**

---

**Anti-IL-13Ra2 / CD213a2 Reference Antibody (Wake Forest U. patent anti-IL-13RA2) -  
Product Information**

Application	FC, E, FTA
Primary Accession	<a href="#">Q14627</a>
Reactivity	Human
Clonality	Monoclonal
Isotype	IgG1
Calculated MW	150 KDa

**Anti-IL-13Ra2 / CD213a2 Reference Antibody (Wake Forest U. patent anti-IL-13RA2) -  
Additional Information**

**Target/Specificity**  
IL-13Ra2 / CD213a2

**Endotoxin**  
< 0.001EU/ µg,determined by LAL method.

**Conjugation**  
Unconjugated

**Expression system**  
CHO Cell

**Format**  
Purified monoclonal antibody supplied in PBS, pH6.0, without preservative.This antibody is purified through a protein A column.

**Storage**  
-80°C for 2 years under sterile conditions □ -20°C for 1 year under sterile conditions □ Avoid repeated freeze-thaw cycles.

**Anti-IL-13Ra2 / CD213a2 Reference Antibody (Wake Forest U. patent anti-IL-13RA2) -  
Protein Information**

**Name** IL13RA2

**Synonyms** IL13R

**Function**  
Binds as a monomer with high affinity to interleukin-13 (IL13), but not to interleukin-4 (IL4).

**Cellular Location**

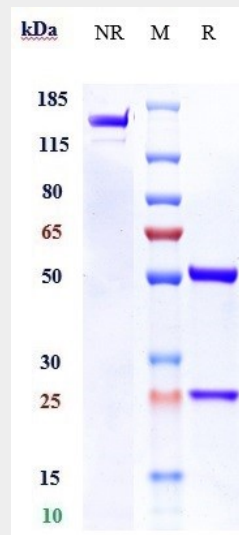
Membrane; Single-pass type I membrane protein.

### Anti-IL-13Ra2 / CD213a2 Reference Antibody (Wake Forest U. patent anti-IL-13RA2) - Protocols

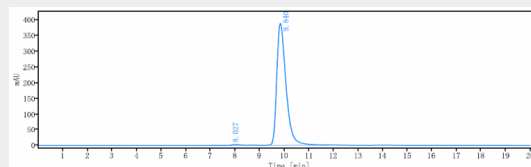
Provided below are standard protocols that you may find useful for product applications.

- [Western Blot](#)
- [Blocking Peptides](#)
- [Dot Blot](#)
- [Immunohistochemistry](#)
- [Immunofluorescence](#)
- [Immunoprecipitation](#)
- [Flow Cytometry](#)
- [Cell Culture](#)

### Anti-IL-13Ra2 / CD213a2 Reference Antibody (Wake Forest U. patent anti-IL-13RA2) - Images



Anti-IL-13Ra2 / CD213a2 Reference Antibody (Wake Forest U. patent anti-IL-13RA2) on SDS-PAGE under reducing (R) condition. The gel was stained with Coomassie Blue. The purity of the protein is greater than 90%



The purity of Anti-IL-13Ra2 / CD213a2 Reference Antibody (Wake Forest U. patent anti-IL-13RA2) is more than 95%, determined by SEC-HPLC.