

Anti-HTRA1 Reference Antibody (FHTR2163)
Recombinant Antibody
Catalog # APR10938**Specification**

Anti-HTRA1 Reference Antibody (FHTR2163) - Product Information

Application	FC, E, FTA
Primary Accession	Q92743
Reactivity	Human, Mouse
Clonality	Monoclonal
Isotype	IgG1
Calculated MW	145.74 KDa

Anti-HTRA1 Reference Antibody (FHTR2163) - Additional Information**Target/Specificity**
HTRA1**Endotoxin**
< 0.001EU/ µg,determined by LAL method.**Conjugation**
Unconjugated**Expression system**
CHO Cell**Format**
Purified monoclonal antibody supplied in PBS, pH6.0, without preservative.This antibody is purified through a protein A column.**Anti-HTRA1 Reference Antibody (FHTR2163) - Protein Information****Name** HTRA1**Synonyms** HTRA, PRSS11**Function**
Serine protease with a variety of targets, including extracellular matrix proteins such as fibronectin. HTRA1-generated fibronectin fragments further induce synovial cells to up-regulate MMP1 and MMP3 production. May also degrade proteoglycans, such as aggrecan, decorin and fibromodulin. Through cleavage of proteoglycans, may release soluble FGF-glycosaminoglycan complexes that promote the range and intensity of FGF signals in the extracellular space. Regulates the availability of insulin-like growth factors (IGFs) by cleaving IGF- binding proteins. Inhibits signaling mediated by TGF-beta family members. This activity requires the integrity of the catalytic site, although it is unclear whether TGF-beta proteins are themselves degraded. By acting on TGF-beta signaling, may regulate many physiological processes, including retinal angiogenesis and neuronal survival and maturation during development. Intracellularly, degrades TSC2, leading

to the activation of TSC2 downstream targets.

Cellular Location

Cell membrane. Secreted Cytoplasm, cytosol. Note=Predominantly secreted (PubMed:15208355). Also found associated with the plasma membrane (PubMed:21297635).

Tissue Location

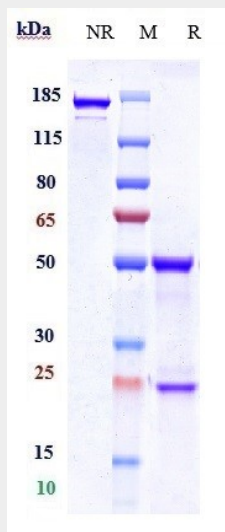
Widely expressed, with strongest expression in placenta (at protein level). Secreted by synovial fibroblasts. Up- regulated in osteoarthritis and rheumatoid arthritis synovial fluids and cartilage as compared with non-arthritic (at protein level)

Anti-HTRA1 Reference Antibody (FHTR2163) - Protocols

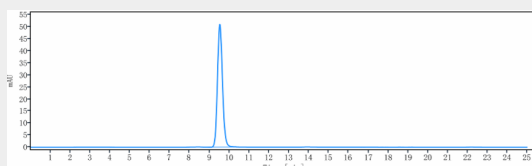
Provided below are standard protocols that you may find useful for product applications.

- [Western Blot](#)
- [Blocking Peptides](#)
- [Dot Blot](#)
- [Immunohistochemistry](#)
- [Immunofluorescence](#)
- [Immunoprecipitation](#)
- [Flow Cytometry](#)
- [Cell Culture](#)

Anti-HTRA1 Reference Antibody (FHTR2163) - Images



Anti-HTRA1 Reference Antibody (FHTR2163) on SDS-PAGE under reducing (R) condition. The gel was stained with Coomassie Blue. The purity of the protein is greater than 95%



The purity of Anti-HTRA1 Reference Antibody (FHTR2163) is more than 95% ,determined by SEC-HPLC.