

**Anti-HGFR / c-Met Reference Antibody (Korea RIBB patent anti-cMet)  
Recombinant Antibody  
Catalog # APR10932**

**Specification**

---

**Anti-HGFR / c-Met Reference Antibody (Korea RIBB patent anti-cMet) - Product Information**

Application	FC, E, FTA
Primary Accession	<a href="#">P08581</a>
Reactivity	Human
Clonality	Monoclonal
Isotype	IgG1
Calculated MW	150 KDa

**Anti-HGFR / c-Met Reference Antibody (Korea RIBB patent anti-cMet) - Additional Information**

**Target/Specificity**

HGFR / c-Met

**Endotoxin**

< 0.001EU/ µg,determined by LAL method.

**Conjugation**

Unconjugated

**Expression system**

CHO Cell

**Format**

Purified monoclonal antibody supplied in PBS, pH6.0, without preservative.This antibody is purified through a protein A column.

**Anti-HGFR / c-Met Reference Antibody (Korea RIBB patent anti-cMet) - Protein Information**

**Name MET**

**Function**

Receptor tyrosine kinase that transduces signals from the extracellular matrix into the cytoplasm by binding to hepatocyte growth factor/HGF ligand. Regulates many physiological processes including proliferation, scattering, morphogenesis and survival. Ligand binding at the cell surface induces autophosphorylation of MET on its intracellular domain that provides docking sites for downstream signaling molecules. Following activation by ligand, interacts with the PI3-kinase subunit PIK3R1, PLCG1, SRC, GRB2, STAT3 or the adapter GAB1. Recruitment of these downstream effectors by MET leads to the activation of several signaling cascades including the RAS-ERK, PI3 kinase-AKT, or PLCgamma-PKC. The RAS-ERK activation is associated with the morphogenetic effects while PI3K/AKT coordinates prosurvival effects. During embryonic development, MET

signaling plays a role in gastrulation, development and migration of neuronal precursors, angiogenesis and kidney formation. During skeletal muscle development, it is crucial for the migration of muscle progenitor cells and for the proliferation of secondary myoblasts (By similarity). In adults, participates in wound healing as well as organ regeneration and tissue remodeling. Promotes also differentiation and proliferation of hematopoietic cells. May regulate cortical bone osteogenesis (By similarity).

#### Cellular Location

Membrane; Single-pass type I membrane protein.

#### Tissue Location

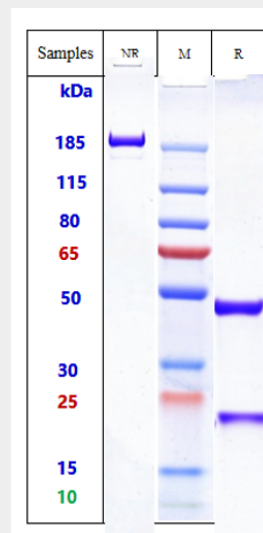
Expressed in normal hepatocytes as well as in epithelial cells lining the stomach, the small and the large intestine Found also in basal keratinocytes of esophagus and skin. High levels are found in liver, gastrointestinal tract, thyroid and kidney. Also present in the brain. Expressed in metaphyseal bone (at protein level) (PubMed:26637977).

### Anti-HGFR / c-Met Reference Antibody (Korea RIBB patent anti-cMet) - Protocols

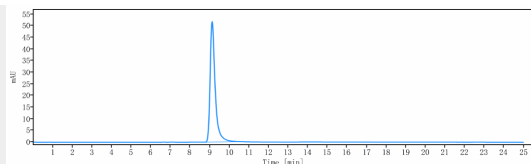
Provided below are standard protocols that you may find useful for product applications.

- [Western Blot](#)
- [Blocking Peptides](#)
- [Dot Blot](#)
- [Immunohistochemistry](#)
- [Immunofluorescence](#)
- [Immunoprecipitation](#)
- [Flow Cytometry](#)
- [Cell Culture](#)

### Anti-HGFR / c-Met Reference Antibody (Korea RIBB patent anti-cMet) - Images



Anti-HGFR / c-Met Reference Antibody (Korea RIBB patent anti-cMet) on SDS-PAGE under reducing (R) condition. The gel was stained with Coomassie Blue. The purity of the protein is greater than 90%



The purity of Anti-HGFR / c-Met Reference Antibody (Korea RIBB patent anti-cMet) is more than 95% ,determined by SEC-HPLC.