

**Anti-FOLR1 / FRA Reference Antibody (Dompe patent anti-FOLR1)  
Recombinant Antibody  
Catalog # APR10913****Specification**

---

**Anti-FOLR1 / FRA Reference Antibody (Dompe patent anti-FOLR1) - Product Information**

Application	FC, E, FTA
Primary Accession	<a href="#">P15328</a>
Reactivity	Human
Clonality	Monoclonal
Isotype	IgG1
Calculated MW	146.46 KDa

**Anti-FOLR1 / FRA Reference Antibody (Dompe patent anti-FOLR1) - Additional Information****Target/Specificity**

FOLR1 / FRA

**Endotoxin**

&lt; 0.001EU/ µg,determined by LAL method.

**Conjugation**

Unconjugated

**Expression system**

CHO Cell

**Format**

Purified monoclonal antibody supplied in PBS, pH6.0, without preservative.This antibody is purified through a protein A column.

**Anti-FOLR1 / FRA Reference Antibody (Dompe patent anti-FOLR1) - Protein Information****Name** FOLR1**Synonyms** FOLR**Function**

Binds to folate and reduced folic acid derivatives and mediates delivery of 5-methyltetrahydrofolate and folate analogs into the interior of cells (PubMed:<a href="http://www.uniprot.org/citations/19074442" target="\_blank">19074442</a>, PubMed:<a href="http://www.uniprot.org/citations/23851396" target="\_blank">23851396</a>, PubMed:<a href="http://www.uniprot.org/citations/23934049" target="\_blank">23934049</a>, PubMed:<a href="http://www.uniprot.org/citations/2527252" target="\_blank">2527252</a>, PubMed:<a href="http://www.uniprot.org/citations/8033114" target="\_blank">8033114</a>, PubMed:<a href="http://www.uniprot.org/citations/8567728" target="\_blank">8567728</a>). Has high affinity for folate and folic acid analogs at neutral pH (PubMed:<a

href="http://www.uniprot.org/citations/23851396" target="\_blank">23851396</a>, PubMed:<a href="http://www.uniprot.org/citations/23934049" target="\_blank">23934049</a>, PubMed:<a href="http://www.uniprot.org/citations/2527252" target="\_blank">2527252</a>, PubMed:<a href="http://www.uniprot.org/citations/8033114" target="\_blank">8033114</a>, PubMed:<a href="http://www.uniprot.org/citations/8567728" target="\_blank">8567728</a>). Exposure to slightly acidic pH after receptor endocytosis triggers a conformation change that strongly reduces its affinity for folates and mediates their release (PubMed:<a href="http://www.uniprot.org/citations/8567728" target="\_blank">8567728</a>). Required for normal embryonic development and normal cell proliferation (By similarity).

#### Cellular Location

Cell membrane; Lipid-anchor, GPI-anchor Apical cell membrane; Lipid-anchor, GPI- anchor Basolateral cell membrane; Lipid-anchor, GPI-like-anchor. Secreted Cytoplasmic vesicle. Cytoplasmic vesicle, clathrin-coated vesicle. Endosome. Note=Endocytosed into cytoplasmic vesicles and then recycled to the cell membrane

#### Tissue Location

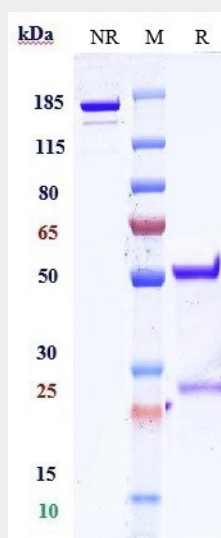
Primarily expressed in tissues of epithelial origin. Expression is increased in malignant tissues. Expressed in kidney, lung and cerebellum. Detected in placenta and thymus epithelium.

### Anti-FOLR1 / FRA Reference Antibody (Dompe patent anti-FOLR1) - Protocols

Provided below are standard protocols that you may find useful for product applications.

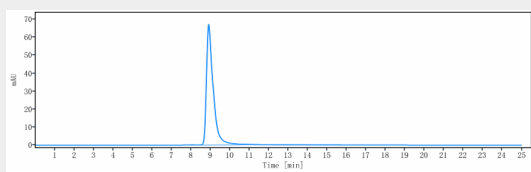
- [Western Blot](#)
- [Blocking Peptides](#)
- [Dot Blot](#)
- [Immunohistochemistry](#)
- [Immunofluorescence](#)
- [Immunoprecipitation](#)
- [Flow Cytometry](#)
- [Cell Culture](#)

### Anti-FOLR1 / FRA Reference Antibody (Dompe patent anti-FOLR1) - Images



Anti-FOLR1 / FRA Reference Antibody (Dompe patent anti-FOLR1) on SDS-PAGE under reducing (R) condition. The gel was stained with Coomassie Blue. The purity of the protein is greater than

95%



The purity of Anti-FOLR1 / FRA Reference Antibody (Dompe patent anti-FOLR1) is more than 95% ,determined by SEC-HPLC.